

Datasheet for ABIN7043303

anti-LETM1 antibody (Intracellular, Mitochondrial Matrix)[Go to Product page](#)**1** Image

Overview

Quantity:	25 µL
Target:	LETM1
Binding Specificity:	AA 587-600, Intracellular, Mitochondrial Matrix
Reactivity:	Human, Mouse, Rat
Host:	Rabbit
Clonality:	Polyclonal
Conjugate:	This LETM1 antibody is un-conjugated
Application:	Western Blotting (WB)

Product Details

Immunogen:	Immunogen: Synthetic peptide Immunogen Sequence: (C)KELSKTGDEKYIEE, corresponding to amino acid residues 587-600 of rat LETM1
Isotype:	IgG
Characteristics:	Anti-LETM1 Antibody (ABIN7043303, ABIN7044855 and ABIN7044856)) is a highly selective antibody directed against an epitope of the rat protein. The antibody can be used in western blot analysis. It has been designed to recognize LETM1 from human, mouse, and rat samples.
Purification:	Affinity purified on immobilized antigen.

Target Details

Target:	LETM1
---------	-------

Target Details

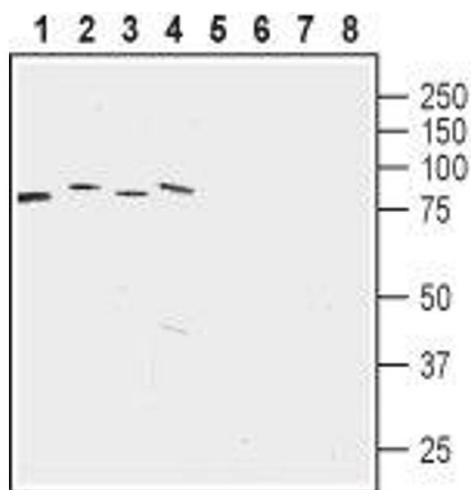
Alternative Name:	LETM1 (LETM1 Products)
Background:	Alternative names: LETM1, Leucine zipper-EF-hand-containing transmembrane protein 1, LETM1 and EF-hand domain-containing protein 1 mitochondrial, Mitochondrial proton/calcium exchanger protein, Mdm38 homolog
Gene ID:	305457
NCBI Accession:	NM_012318
UniProt:	Q5XIN6

Application Details

Application Notes:	Optimal working dilution should be determined by the investigator.
Restrictions:	For Research Use only

Handling

Format:	Lyophilized
Reconstitution:	25 µL, 50 µL or 0.2 mL double distilled water (DDW), depending on the sample size.
Concentration:	0.8 mg/mL
Buffer:	Reconstituted antibody contains phosphate buffered saline (PBS), pH 7.4, 1 % BSA, 0.05 % Sodium azide.
Preservative:	Sodium azide
Precaution of Use:	This product contains Sodium azide: a POISONOUS AND HAZARDOUS SUBSTANCE which should be handled by trained staff only.
Storage:	RT, 4 °C, -20 °C
Storage Comment:	<p>Storage before reconstitution: The antibody ships as a lyophilized powder at room temperature. Upon arrival, it should be stored at -20°C.</p> <p>Storage after reconstitution: The reconstituted solution can be stored at 4°C for up to 1 week. For longer periods, small aliquots should be stored at -20°C. Avoid multiple freezing and thawing. Centrifuge all antibody preparations before use (10000 x g 5 min).</p>



Western Blotting

Image 1. Western blot analysis of rat brain membrane (lanes 1 and 5), mouse brain membrane (lanes 2 and 6), human acute lymphoblastic leukemia (MOLT-4) (lanes 3 and 7) and human colorectal adenocarcinoma (HT-29) cell lysates: - 1-4. Anti-LETM1 Antibody (ABIN7043303, ABIN7044855 and ABIN7044856), (1:1500).5-8. Anti-LETM1 Antibody, preincubated with LETM1 Blocking Peptide (#BLP-NT183).