

Datasheet for ABIN7043307

anti-Leukotriene B4 Receptor/BLT antibody (2nd Extracellular Loop)[Go to Product page](#)**3** Images

Overview

Quantity:	50 µL
Target:	Leukotriene B4 Receptor/BLT (LTB4R)
Binding Specificity:	2nd Extracellular Loop, AA 168-181
Reactivity:	Human
Host:	Rabbit
Clonality:	Polyclonal
Conjugate:	This Leukotriene B4 Receptor/BLT antibody is un-conjugated
Application:	Flow Cytometry (FACS), Western Blotting (WB)

Product Details

Immunogen:	Immunogen: Synthetic peptide
	Immunogen Sequence: CFPRYPSEGHRAFH, corresponding to amino acid residues 168-181 of human LTB4R
Isotype:	IgG
Cross-Reactivity (Details):	Not recommended for use with rat and mouse samples.
Characteristics:	Anti-Human BLT1 (extracellular) Antibody (ABIN7043307 and ABIN7044557)) is a highly specific antibody directed against an extracellular epitope of the human Leukotriene B4 receptor 1. The antibody can be used for western blot and indirect flow cytometry applications. It has been designed to recognize LTB4R from human samples only.
Purification:	Affinity purified on immobilized antigen.

Target Details

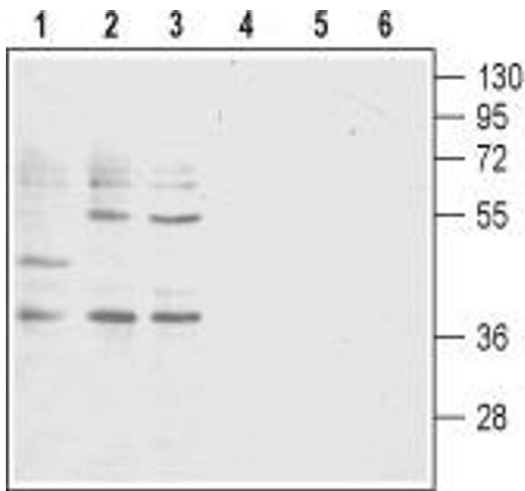
Target:	Leukotriene B4 Receptor/BLT (LTB4R)
Alternative Name:	BLT1 (LTB4R Products)
Background:	Alternative names: BLT1, Leukotriene B4 receptor 1, LTB4R, LTB4R1, CMKRL1, GPR16, P2Y7, P2RY7
Gene ID:	1241
NCBI Accession:	NM_001143919
UniProt:	Q15722

Application Details

Application Notes:	Optimal working dilution should be determined by the investigator.
Restrictions:	For Research Use only

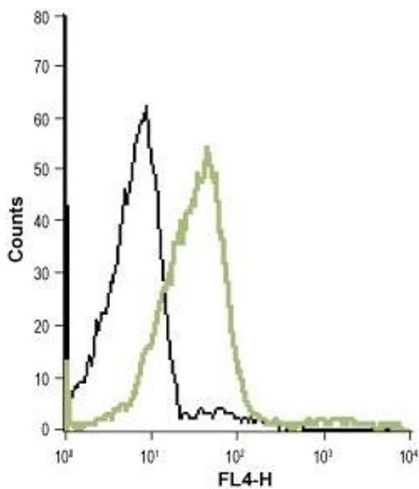
Handling

Format:	Lyophilized
Reconstitution:	50 µL or 0.2 mL double distilled water (DDW), depending on the sample size.
Concentration:	0.8 mg/mL
Buffer:	Reconstituted antibody contains phosphate buffered saline (PBS), pH 7.4, 1 % BSA, 0.05 % Sodium azide.
Preservative:	Sodium azide
Precaution of Use:	This product contains Sodium azide: a POISONOUS AND HAZARDOUS SUBSTANCE which should be handled by trained staff only.
Storage:	RT, 4 °C, -20 °C
Storage Comment:	<p>Storage before reconstitution: The antibody ships as a lyophilized powder at room temperature. Upon arrival, it should be stored at -20°C.</p> <p>Storage after reconstitution: The reconstituted solution can be stored at 4°C for up to 1 week. For longer periods, small aliquots should be stored at -20°C. Avoid multiple freezing and thawing. Centrifuge all antibody preparations before use (10000 x g 5 min).</p>



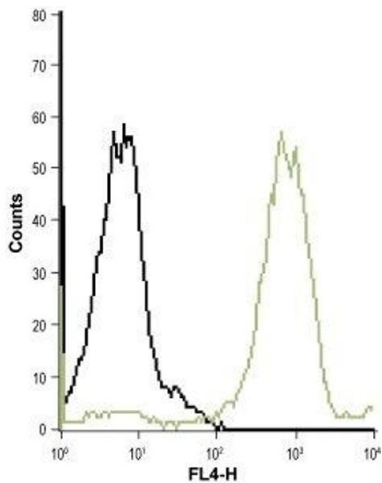
Western Blotting

Image 1. Western blot analysis of acute T-cell leukemia Jurkat (lanes 1 and 4), promyelocytic leukemia HL-60 (lanes 2 and 5) and acute monocytic leukemia THP-1 (lanes 3 and 6) human cell lysates: - 1-3. Anti-Human BLT1 (extracellular) Antibody (ABIN7043307 and ABIN7044557), (1:200). 4-6. Anti-Human BLT1 (extracellular) Antibody, preincubated with Human BLT1 (extracellular) Blocking Peptide (#BLP-LR001).



Flow Cytometry

Image 2. Cell surface detection of LTB4R in live intact human T cell leukemia (Jurkat) cell line: (black line) Control cells + goat-anti-rabbit-Cy5.(green line) Cells + Anti-Human BLT1 (extracellular) Antibody (ABIN7043307 and ABIN7044557), (1:25) + goat-anti-rabbit-Cy5.



Flow Cytometry

Image 3. Cell surface detection of LTB4R in live intact human acute monocytic leukemia (THP-1) cell line: (black line) Control cells + goat-anti-rabbit-Cy5. (green line) Cells + Anti-Human BLT1 (extracellular) Antibody (ABIN7043307 and ABIN7044557), (1:25) + goat-anti-rabbit-Cy5.