

Datasheet for ABIN7043310
anti-LYNX1 antibody (Extracellular, N-Term)



[Go to Product page](#)

4 Images

Overview

Quantity:	50 µL
Target:	LYNX1
Binding Specificity:	AA 26-38, Extracellular, N-Term
Reactivity:	Human, Mouse, Rat
Host:	Rabbit
Clonality:	Polyclonal
Conjugate:	This LYNX1 antibody is un-conjugated
Application:	Western Blotting (WB), Flow Cytometry (FACS), Immunofluorescence (IF), Immunohistochemistry (IHC)

Product Details

Immunogen:	Immunogen: Synthetic peptide Immunogen Sequence: CAYNGDN(S)FKPMR, corresponding to amino acid residues 26-38 of mouse Lynx1
Isotype:	IgG
Characteristics:	Anti-Lynx1 (extracellular) Antibody (ABIN7043310, ABIN7044635 and ABIN7044636)) is a highly specific antibody directed against an epitope of the mouse protein. The antibody can be used in western blot, indirect live cell flow cytometry, and immunohistochemistry applications. It has been designed to recognize Lynx1 from rat, mouse, and human samples.
Purification:	Affinity purified on immobilized antigen.

Target Details

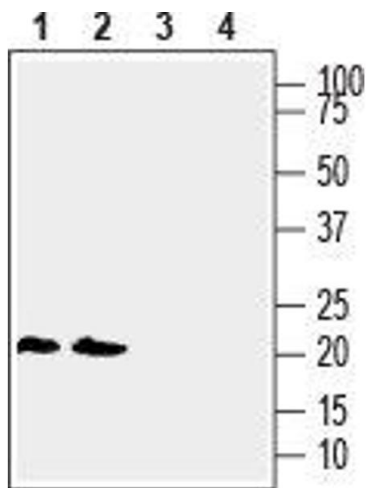
Target:	LYNX1
Alternative Name:	Lynx1 (LYNX1 Products)
Background:	Alternative names: Ly-6/Neurotoxin-like protein 1, Endogenous prototoxin LYNX1
Gene ID:	23936
NCBI Accession:	NM_177476
UniProt:	P0DP60

Application Details

Application Notes:	Optimal working dilution should be determined by the investigator.
Restrictions:	For Research Use only

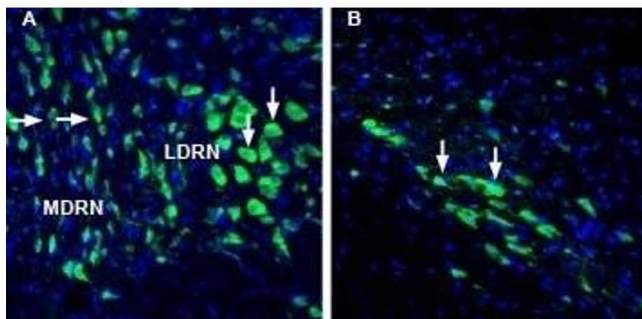
Handling

Format:	Lyophilized
Reconstitution:	25 μ L, 50 μ L or 0.2 mL double distilled water (DDW), depending on the sample size.
Concentration:	0.8 mg/mL
Buffer:	Reconstituted antibody contains phosphate buffered saline (PBS), pH 7.4, 1 % BSA, 0.05 % Sodium azide.
Preservative:	Sodium azide
Precaution of Use:	This product contains Sodium azide: a POISONOUS AND HAZARDOUS SUBSTANCE which should be handled by trained staff only.
Storage:	RT, 4 °C, -20 °C
Storage Comment:	Storage before reconstitution: The antibody ships as a lyophilized powder at room temperature. Upon arrival, it should be stored at -20°C. Storage after reconstitution: The reconstituted solution can be stored at 4°C for up to 1 week. For longer periods, small aliquots should be stored at -20°C. Avoid multiple freezing and thawing. Centrifuge all antibody preparations before use (10000 x g 5 min).



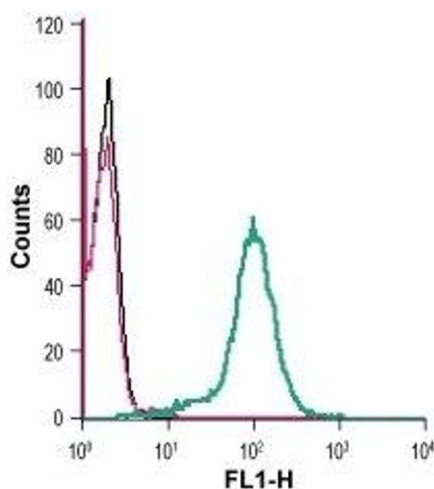
Western Blotting

Image 1. Western blot analysis of human THP-1 monocytic leukemia cell line lysate (lanes 1 and 3) and human Jurkat T-cell leukemia cell line lysate (lanes 2 and 4): - 1, 2. Anti-Lynx1 (extracellular) Antibody (ABIN7043310, ABIN7044635 and ABIN7044636), (1:200). 3, 4. Anti-Lynx1 (extracellular) Antibody, preincubated with Lynx1 (extracellular) Blocking Peptide (#BLP-NC021).



Immunohistochemistry

Image 2. Expression of Lynx1 in rat dorsal raphe nucleus and substantia nigra pars compacta - Immunohistochemical staining of perfusion-fixed frozen rat brain sections with Anti-Lynx1 (extracellular) Antibody (ABIN7043310, ABIN7044635 and ABIN7044636), (1:1000), followed by goat anti-rabbit-AlexaFluor-488. A. Lynx1 staining in the dorsal raphe nucleus (DRN), (green) is detected in cells of the medial DRN (MDRN, horizontal arrows) and in cells of the lateral DRN (LDRN), (vertical arrows). B. Lynx1 immunoreactivity in the substantia nigra pars compacta (SNC), (green) is observed in cells of the SNC (arrows). Cell nuclei are stained with DAPI (blue).



Flow Cytometry

Image 3. Cell surface detection of Lynx1 in live intact human THP-1 monocytic leukemia cells: (black line) Cells.(red line) Cells + goat-anti-rabbit-FITC.(green line) Cells + Anti-Lynx1 (extracellular) Antibody (ABIN7043310, ABIN7044635 and ABIN7044636), (2.5 µg) + goat-anti-rabbit-FITC.

Please check the [product details page](#) for more images. Overall 4 images are available for ABIN7043310.