

Datasheet for ABIN7043312
anti-EDG4 antibody (Extracellular, N-Term)

2 Images

[Go to Product page](#)

Overview

Quantity:	25 µL
Target:	EDG4 (LPAR2)
Binding Specificity:	AA 16-29, Extracellular, N-Term
Reactivity:	Human, Mouse, Rat
Host:	Rabbit
Clonality:	Polyclonal
Conjugate:	This EDG4 antibody is un-conjugated
Application:	Western Blotting (WB)

Product Details

Immunogen:	Immunogen: Synthetic peptide
	Immunogen Sequence: (C)NSGKELSLHWRPKD, corresponding to amino acid residues 16-29 of mouse LPA2 receptor
Isotype:	IgG
Characteristics:	Anti-LPAR2 (EDG4) (extracellular) Antibody (ABIN7043312, ABIN7044568 and ABIN7044569)) is a highly specific antibody directed against an epitope of the mouse LPA2 receptor. The antibody can be used in western blot analysis. It recognizes an extracellular epitope and thus is ideal for detecting the receptor in living cells. It has been designed to recognize LPA2 receptor from human, rat, and mouse samples.
Purification:	Affinity purified on immobilized antigen.

Target Details

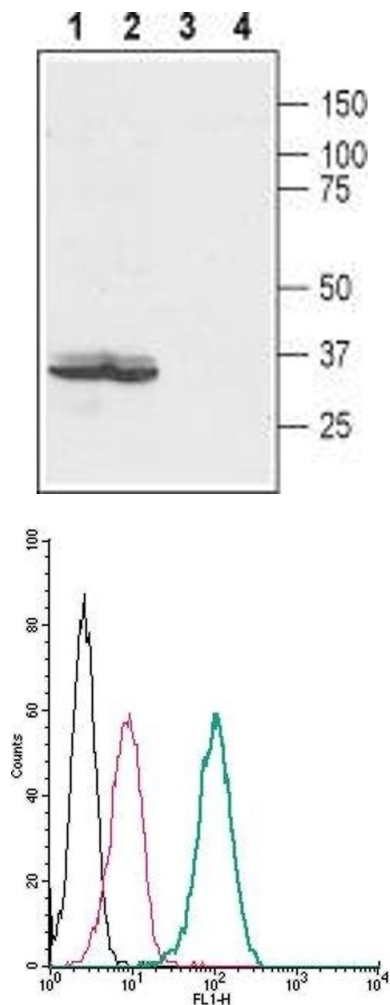
Target:	EDG4 (LPAR2)
Alternative Name:	LPAR2 (EDG4) (LPAR2 Products)
Background:	Alternative names: LPAR2 (EDG4), Lysophosphatidic acid receptor 2, LPA receptor 2, LPA-2
Gene ID:	53978
NCBI Accession:	NM_004720
UniProt:	Q9JL06

Application Details

Application Notes:	Optimal working dilution should be determined by the investigator.
Restrictions:	For Research Use only

Handling

Format:	Lyophilized
Reconstitution:	25 µL, 50 µL or 0.2 mL double distilled water (DDW), depending on the sample size.
Concentration:	0.85 mg/mL
Buffer:	Reconstituted antibody contains phosphate buffered saline (PBS), pH 7.4, 1 % BSA, 0.05 % Sodium azide.
Preservative:	Sodium azide
Precaution of Use:	This product contains Sodium azide: a POISONOUS AND HAZARDOUS SUBSTANCE which should be handled by trained staff only.
Storage:	RT, 4 °C, -20 °C
Storage Comment:	<p>Storage before reconstitution: The antibody ships as a lyophilized powder at room temperature. Upon arrival, it should be stored at -20°C.</p> <p>Storage after reconstitution: The reconstituted solution can be stored at 4°C for up to 1 week. For longer periods, small aliquots should be stored at -20°C. Avoid multiple freezing and thawing. Centrifuge all antibody preparations before use (10000 x g 5 min).</p>



Western Blotting

Image 1. Western blot analysis of rat colon (lanes 1 and 3) and human colorectal adenocarcinoma (colo205) (lanes 2 and 4) lysates: - 1,2. Anti-LPAR2 (EDG4) (extracellular) Antibody (ABIN7043312, ABIN7044568 and ABIN7044569), (1:200).3,4. Anti-LPAR2 (EDG4) (extracellular) Antibody, preincubated with LPAR2/EDG4 (extracellular) Blocking Peptide (#BLP-LR032).

Flow Cytometry

Image 2. Cell surface detection of LPAR2 (EDG4) by indirect flow cytometry in live intact human THP-1 monocytic leukemia cells: (black line) Cells.(red line) Cells + goat-anti-rabbit-FITC.(green line) Cells + LPAR2 (EDG4) (extracellular) Antibody (ABIN7043312, ABIN7044568 and ABIN7044569), (2.5 µg) + goat-anti-rabbit-FITC.