

Datasheet for ABIN7043317
anti-LPAR6 antibody (2nd Extracellular Loop)

2 Images

[Go to Product page](#)

Overview

Quantity:	25 µL
Target:	LPAR6
Binding Specificity:	2nd Extracellular Loop, AA 156-168
Reactivity:	Human, Mouse, Rat
Host:	Rabbit
Clonality:	Polyclonal
Conjugate:	This LPAR6 antibody is un-conjugated
Application:	Western Blotting (WB)

Product Details

Immunogen:	Immunogen: Synthetic peptide
	Immunogen Sequence: STHSQGNASEAC, corresponding to amino acid residues 156-168 of human LPA receptor 6
Isotype:	IgG
Characteristics:	Anti-LPAR6 (P2RY5) (extracellular) Antibody is directed against an epitope of the human LPA receptor 6. Anti-LPAR6 (P2RY5) (extracellular) Antibody (ABIN7043317, ABIN7044576 and ABIN7044577) can be used in western blot analysis. The antibody recognizes an extracellular epitope and is thus ideal for detecting the receptor in living cells. It has been designed to recognize LPA receptor 6 from mouse, rat and human samples.
Purification:	Affinity purified on immobilized antigen.

Target Details

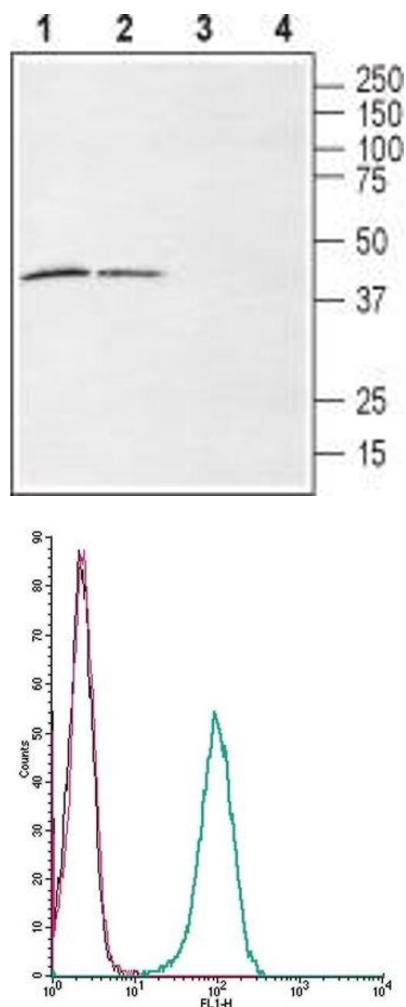
Target:	LPAR6
Alternative Name:	LPAR6 (P2RY5) (LPAR6 Products)
Background:	Alternative names: LPAR6 (P2RY5), Lysophosphatidic acid receptor 6, LPA receptor 6, LPA-6, P2Y purinoceptor 5, Purinergic receptor 5, P2Y5, RB intron encoded G-protein coupled receptor
Gene ID:	10161
NCBI Accession:	NM_005767
UniProt:	P43657

Application Details

Application Notes:	Optimal working dilution should be determined by the investigator.
Restrictions:	For Research Use only

Handling

Format:	Lyophilized
Reconstitution:	25 µL, 50 µL or 0.2 mL double distilled water (DDW), depending on the sample size.
Concentration:	0.85 mg/mL
Buffer:	Reconstituted antibody contains phosphate buffered saline (PBS), pH 7.4, 1 % BSA, 0.05 % Sodium azide.
Preservative:	Sodium azide
Precaution of Use:	This product contains Sodium azide: a POISONOUS AND HAZARDOUS SUBSTANCE which should be handled by trained staff only.
Storage:	RT, 4 °C, -20 °C
Storage Comment:	<p>Storage before reconstitution: The antibody ships as a lyophilized powder at room temperature. Upon arrival, it should be stored at -20°C.</p> <p>Storage after reconstitution: The reconstituted solution can be stored at 4°C for up to 1 week. For longer periods, small aliquots should be stored at -20°C. Avoid multiple freezing and thawing. Centrifuge all antibody preparations before use (10000 x g 5 min).</p>



Western Blotting

Image 1. Western blot analysis of rat (lanes 1 and 3) and mouse (lanes 2 and 4) brain membranes: - 1,2. Anti-LPAR6 (P2RY5) (extracellular) Antibody (ABIN7043317, ABIN7044576 and ABIN7044577), (1:200).3,4. Anti-LPAR6 (P2RY5) (extracellular) Antibody, preincubated with LPAR6/P2RY5 (extracellular) Blocking Peptide (#BLP-LR036).

Flow Cytometry

Image 2. Cell surface detection of LPAR6 by indirect flow cytometry in live intact human THP-1 monocytic leukemia cells: (black line) Cells.(red line) Cells + goat-anti-rabbit-FITC.(green line) Cells + Anti-LPAR6 (P2RY5) (extracellular) Antibody (ABIN7043317, ABIN7044576 and ABIN7044577) , (2.5 µg) + goat-anti-rabbit-FITC.