

Datasheet for ABIN7043319

anti-MRGPRE antibody (3rd Intracellular Loop)**3** Images[Go to Product page](#)

Overview

Quantity:	50 µL
Target:	MRGPRES
Binding Specificity:	3rd Intracellular Loop, AA 197-209
Reactivity:	Human, Rat, Mouse
Host:	Rabbit
Clonality:	Polyclonal
Conjugate:	This MRGPRES antibody is un-conjugated
Application:	Western Blotting (WB), Immunohistochemistry (IHC), Immunofluorescence (IF)

Product Details

Immunogen:	Immunogen: Synthetic peptide Immunogen Sequence: (C)RVERGPERHQPRG, corresponding to amino acid residues 197 - 209 of rat MRGPRES
Isotype:	IgG
Characteristics:	Anti-MRGPRE Antibody (ABIN7043319, ABIN7044604 and ABIN7044605) is a highly specific antibody directed against an epitope of the rat protein. The antibody can be used in western blot and immunohistochemistry applications. It has been designed to recognize MRGPRES from rat, human, and mouse samples.
Purification:	Affinity purified on immobilized antigen.

Target Details

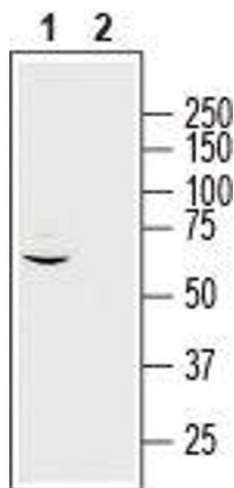
Target:	MRGPRE
Alternative Name:	MRGPRE (MRGPRE Products)
Background:	Alternative names: MRGPRE, Mas-related G-protein coupled receptor member E, GPCR MRGE, GPR167
Gene ID:	404660
NCBI Accession:	NM_001039165
UniProt:	Q7TN40

Application Details

Application Notes:	Optimal working dilution should be determined by the investigator.
Restrictions:	For Research Use only

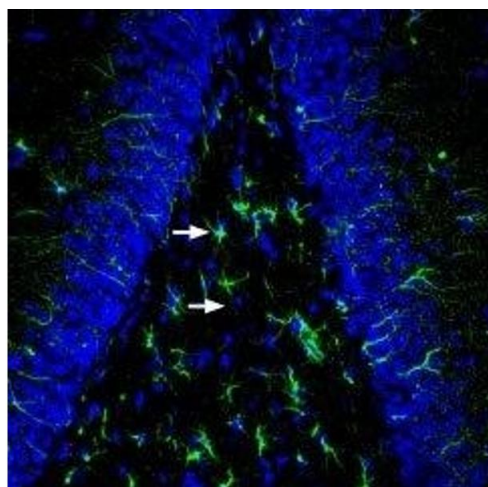
Handling

Format:	Lyophilized
Reconstitution:	25 µL, 50 µL or 0.2 mL double distilled water (DDW), depending on the sample size.
Concentration:	0.8 mg/mL
Buffer:	Reconstituted antibody contains phosphate buffered saline (PBS), pH 7.4, 1 % BSA, 0.05 % Sodium azide.
Preservative:	Sodium azide
Precaution of Use:	This product contains Sodium azide: a POISONOUS AND HAZARDOUS SUBSTANCE which should be handled by trained staff only.
Storage:	RT, 4 °C, -20 °C
Storage Comment:	<p>Storage before reconstitution: The antibody ships as a lyophilized powder at room temperature. Upon arrival, it should be stored at -20°C.</p> <p>Storage after reconstitution: The reconstituted solution can be stored at 4°C for up to 1 week. For longer periods, small aliquots should be stored at -20°C. Avoid multiple freezing and thawing. Centrifuge all antibody preparations before use (10000 x g 5 min).</p>



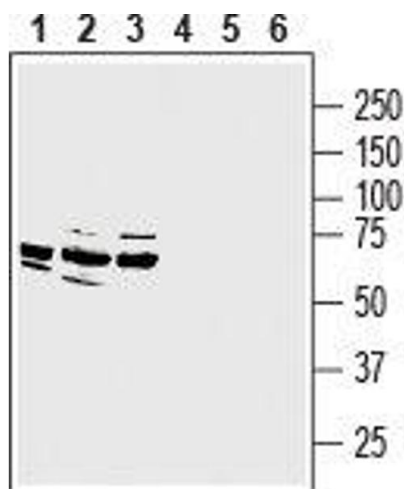
Western Blotting

Image 1. Western blot analysis of human U-87 MG glioblastoma: - 1. Anti-MRGPRE Antibody (ABIN7043319, ABIN7044604 and ABIN7044605), (1:400).2. Anti-MRGPRE Antibody, preincubated with MRGPRES Blocking Peptide (#BLP-MR062).



Immunohistochemistry

Image 2. Expression of MRGE in rat hippocampus - Immunohistochemical staining of perfusion-fixed frozen rat brain sections with Anti-MRGPRE Antibody (ABIN7043319, ABIN7044604 and ABIN7044605), (1:200), followed by goat-anti-rabbit-AlexaFluor-488. MRGE staining (green) in hippocampal dentate gyrus is detected in astrocytes (arrows). Cell nuclei are stained with DAPI (blue).



Western Blotting

Image 3. Western blot analysis of rat dorsal root ganglion lysate (lanes 1 and 4), mouse (lanes 2 and 5) and rat (lanes 3 and 6) brain membranes: - 1-3. Anti-MRGPRE Antibody (ABIN7043319, ABIN7044604 and ABIN7044605), (1:400).4-6. Anti-MRGPRE Antibody, preincubated with MRGPRES Blocking Peptide (#BLP-MR062).