

Datasheet for ABIN7043320
anti-MCHR1 antibody (Extracellular, N-Term)



[Go to Product page](#)

2 Images

Overview

Quantity:	50 µL
Target:	MCHR1
Binding Specificity:	AA 7-20, Extracellular, N-Term
Reactivity:	Human, Rat, Mouse
Host:	Rabbit
Clonality:	Polyclonal
Application:	Western Blotting (WB), Immunocytochemistry (ICC), Immunofluorescence (IF), Live Cell Imaging (LCI)

Product Details

Immunogen:	Immunogen: Synthetic peptide Immunogen Sequence: CMDLQTSSLSTGPNASN, corresponding to amino acid residues 7-20 of rat MCHR1
Isotype:	IgG
Characteristics:	Anti-MCHR1 (extracellular) Antibody (ABIN7043320 and ABIN7044603) is a highly specific antibody directed against an epitope of the rat Melanin-concentrating hormone receptor 1. The antibody can be used in western blot and immunocytochemistry applications. It has been designed to recognize MCHR1 from rat, mouse, and human samples.
Purification:	Affinity purified on immobilized antigen.

Target Details

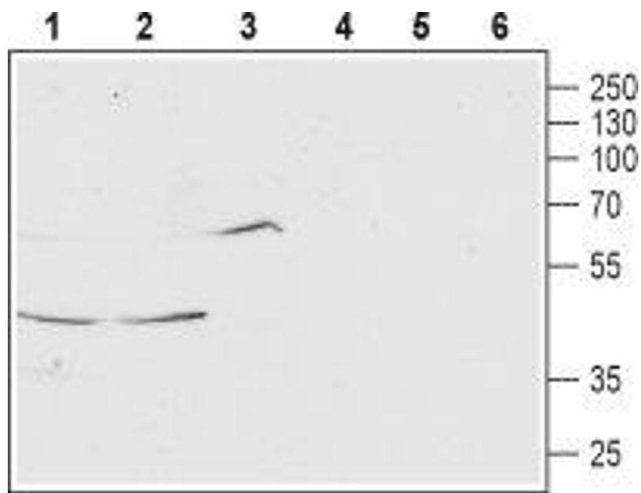
Target:	MCHR1
Alternative Name:	MCHR1 (MCHR1 Products)
Background:	Alternative names: MCHR1, Melanin-concentrating hormone receptor 1, MCH1, MCH1R, GPR24, Somatostatin receptor-like protein, SLC-1
Gene ID:	83567
NCBI Accession:	NM_005297
UniProt:	P97639
Pathways:	Feeding Behaviour

Application Details

Application Notes:	Optimal working dilution should be determined by the investigator.
Restrictions:	For Research Use only

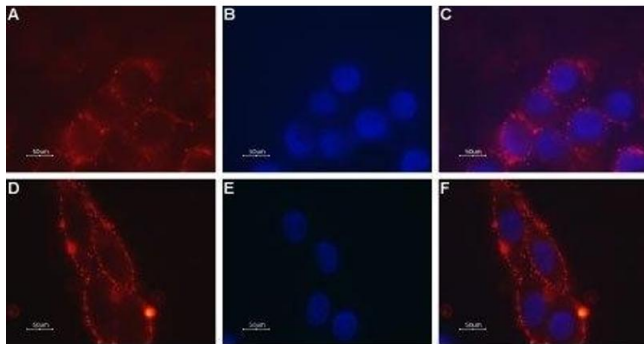
Handling

Format:	Lyophilized
Reconstitution:	50 µL or 0.2 mL double distilled water (DDW), depending on the sample size.
Concentration:	0.8 mg/mL
Buffer:	Reconstituted antibody contains phosphate buffered saline (PBS), pH 7.4, 1 % BSA, 0.05 % Sodium azide.
Preservative:	Sodium azide
Precaution of Use:	This product contains Sodium azide: a POISONOUS AND HAZARDOUS SUBSTANCE which should be handled by trained staff only.
Storage:	RT, 4 °C, -20 °C
Storage Comment:	Storage before reconstitution: The antibody ships as a lyophilized powder at room temperature. Upon arrival, it should be stored at -20°C. Storage after reconstitution: The reconstituted solution can be stored at 4°C for up to 1 week. For longer periods, small aliquots should be stored at -20°C. Avoid multiple freezing and thawing. Centrifuge all antibody preparations before use (10000 x g 5 min).



Western Blotting

Image 1. Western blot analysis of rat brain (lanes 1 and 4), mouse brain (lanes 2 and 5) and human SH-SY5Y (lanes 3 and 6) lysates: - 1-3. Anti-MCHR1 (extracellular) Antibody (ABIN7043320 and ABIN7044603), (1:200).4-6. Anti-MCHR1 (extracellular) Antibody, preincubated with MCHR1 (extracellular) Blocking Peptide (#BLP-MR041).



Immunocytochemistry

Image 2. Expression of Melanin-concentrating hormone receptor 1 in mouse brain glioma - Cell surface detection of MCHR1 in mouse brain glioma (C6) intact living cells. A. Extracellular staining of cells with Anti-MCHR1 (extracellular) Antibody (ABIN7043320 and ABIN7044603) followed by goat anti-rabbit-AlexaFluor-594 secondary antibody. B. Nuclear staining using DAPI as the counterstain. C. Merged images of A and B.