

Datasheet for ABIN7043326

anti-Melatonin Receptor 1A antibody (3rd Intracellular Loop)[Go to Product page](#)**2** Images

Overview

Quantity:	50 µL
Target:	Melatonin Receptor 1A (MTNR1A)
Binding Specificity:	3rd Intracellular Loop, AA 223-236
Reactivity:	Mouse, Rat
Host:	Rabbit
Clonality:	Polyclonal
Application:	Western Blotting (WB), Immunohistochemistry (IHC), Immunofluorescence (IF)

Product Details

Immunogen:	Immunogen: Synthetic peptide Immunogen Sequence: (C)RVKPDNKPQLKPQD, corresponding to amino acid residues 223-236 of mouse MTNR1A
Isotype:	IgG
Characteristics:	Anti-Melatonin Receptor 1A (MTNR1A) Antibody (ABIN7043326, ABIN7044599 and ABIN7044600)) is a highly specific antibody directed against an epitope of mouse MT1. The antibody can be used in western blot and immunohistochemistry applications. It has been designed to recognize MT1 from human, rat, and mouse samples.
Purification:	Affinity purified on immobilized antigen.

Target Details

Target:	Melatonin Receptor 1A (MTNR1A)
---------	--------------------------------

Target Details

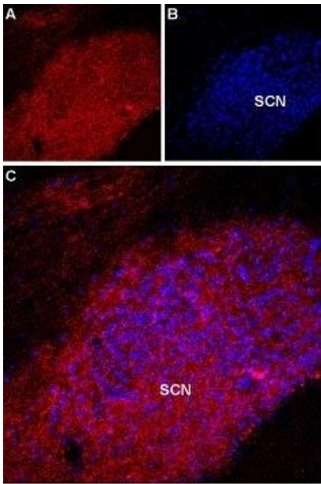
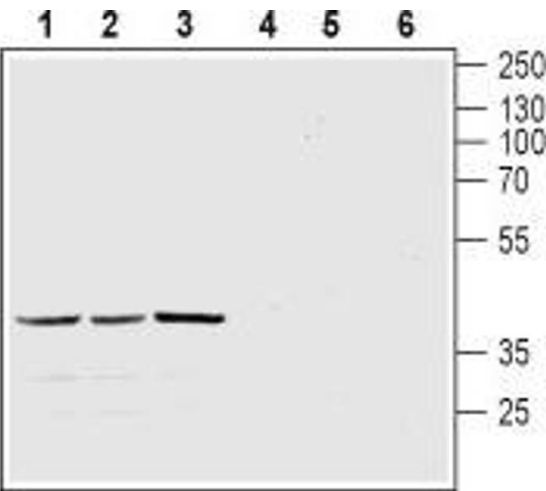
Abstract:	MTNR1A Products
Background:	Alternative names: Melatonin Receptor 1A (MTNR1A), MT1, Mel1a receptor, Mel-1A-R
Gene ID:	17773
NCBI Accession:	NM_005958
UniProt:	Q61184

Application Details

Application Notes:	Optimal working dilution should be determined by the investigator.
Restrictions:	For Research Use only

Handling

Format:	Lyophilized
Reconstitution:	25 µL, 50 µL or 0.2 mL double distilled water (DDW), depending on the sample size.
Concentration:	0.8 mg/mL
Buffer:	Reconstituted antibody contains phosphate buffered saline (PBS), pH 7.4, 1 % BSA, 0.05 % Sodium azide.
Preservative:	Sodium azide
Precaution of Use:	This product contains Sodium azide: a POISONOUS AND HAZARDOUS SUBSTANCE which should be handled by trained staff only.
Storage:	RT, 4 °C, -20 °C
Storage Comment:	<p>Storage before reconstitution: The antibody ships as a lyophilized powder at room temperature. Upon arrival, it should be stored at -20°C.</p> <p>Storage after reconstitution: The reconstituted solution can be stored at 4°C for up to 1 week. For longer periods, small aliquots should be stored at -20°C. Avoid multiple freezing and thawing. Centrifuge all antibody preparations before use (10000 x g 5 min).</p>



Western Blotting

Image 1. Western blot analysis of mouse brain (lanes 1 and 4), rat brain (lanes 2 and 5) and rat cerebellum (lanes 3 and 6) lysates: - 1-3. Anti-Melatonin Receptor 1A (MTNR1A) Antibody (ABIN7043326, ABIN7044599 and ABIN7044600), (1:200).4-6. Anti-Melatonin Receptor 1A (MTNR1A) Antibody, preincubated with Melatonin Receptor 1A/MTNR1A Blocking Peptide (#BLP-MR031).

Immunohistochemistry

Image 2. Expression of Melatonin receptor type 1A in rat supra-chiasmatic nucleus - Immunohistochemical staining of rat supra-chiasmatic nucleus (SCN) with Anti-Melatonin Receptor 1A (MTNR1A) Antibody (ABIN7043326, ABIN7044599 and ABIN7044600). A. MT1 staining is restricted to the SCN (red). B. DAPI is used as the counterstain (blue). C. Merge of A and B.