

Datasheet for ABIN7043332

anti-MCU antibody (Mitochondrial Matrix, N-Term)[Go to Product page](#)**2** Images

Overview

Quantity:	25 µL
Target:	MCU
Binding Specificity:	AA 191-206, Mitochondrial Matrix, N-Term
Reactivity:	Human, Mouse, Rat
Host:	Rabbit
Clonality:	Polyclonal
Conjugate:	This MCU antibody is un-conjugated
Application:	Western Blotting (WB)

Product Details

Immunogen:	Immunogen: Synthetic peptide Immunogen Sequence: CIEQHQLNKERELIER, corresponding to amino acid residues 191-206 of human mitochondrial calcium uniporter
Isotype:	IgG
Characteristics:	Anti-MCU Antibody (ABIN7043332, ABIN7044117 and ABIN7044118)) is a highly selective antibody directed against an epitope of the human mitochondrial calcium uniporter. The antibody can be used in western blot analysis. It has been designed to recognize MCU from human, mouse, and rat samples.
Purification:	Affinity purified on immobilized antigen.

Target Details

Target:	MCU
Alternative Name:	MCU (MCU Products)
Background:	Alternative names: MCU, Mitochondrial calcium uniporter, HsMCU, Coiled-coil domain-containing protein 109A, Ccdc109a, C10orf42
Gene ID:	90550
NCBI Accession:	NM_138357
UniProt:	Q8NE86
Pathways:	Positive Regulation of Peptide Hormone Secretion , Carbohydrate Homeostasis

Application Details

Application Notes:	Optimal working dilution should be determined by the investigator.
Restrictions:	For Research Use only

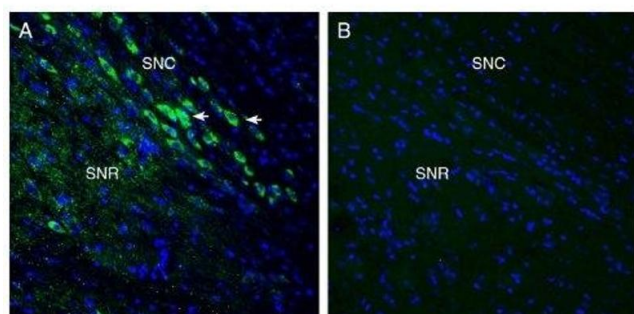
Handling

Format:	Lyophilized
Reconstitution:	25 µL, 50 µL or 0.2 mL double distilled water (DDW), depending on the sample size.
Concentration:	0.8 mg/mL
Buffer:	Reconstituted antibody contains phosphate buffered saline (PBS), pH 7.4, 1 % BSA, 0.05 % Sodium azide.
Preservative:	Sodium azide
Precaution of Use:	This product contains Sodium azide: a POISONOUS AND HAZARDOUS SUBSTANCE which should be handled by trained staff only.
Storage:	RT, 4 °C, -20 °C
Storage Comment:	<p>Storage before reconstitution: The antibody ships as a lyophilized powder at room temperature. Upon arrival, it should be stored at -20°C.</p> <p>Storage after reconstitution: The reconstituted solution can be stored at 4°C for up to 1 week. For longer periods, small aliquots should be stored at -20°C. Avoid multiple freezing and thawing. Centrifuge all antibody preparations before use (10000 x g 5 min).</p>



Western Blotting

Image 1. Western blot analysis of rat kidney (lanes 1 and 5), rat skeletal muscle (lanes 2 and 6), rat brain (lanes 3 and 7) and mouse brain (lanes 4 and 8) lysates: - 1-4. Anti-MCU Antibody (ABIN7043332, ABIN7044117 and ABIN7044118), (1:200). 5-8. Anti-MCU Antibody, preincubated with MCU Blocking Peptide (#BLP-CC328).



Immunohistochemistry

Image 2. Expression of MCU in mouse midbrain. - Immunohistochemical staining of perfusion-fixed frozen mouse brain sections with Anti-MCU Antibody (ABIN7043332, ABIN7044117 and ABIN7044118), (1:300), followed by goat anti-rabbit-AlexaFluor-488. A. Staining in the mouse substantia nigra region, showed immunoreactivity (green) in neuronal profiles in the substantia nigra pars compacta (SNC, horizontal arrows). B. Pre-incubation of the antibody with MCU Blocking Peptide (BLP-CC328), suppressed staining. Cell nuclei are stained with DAPI (blue). SNR = substantia nigra pars reticulata.