

Datasheet for ABIN7043349
anti-Netrin 1 antibody (Secreted)[Go to Product page](#)

4 Images

Overview

Quantity:	0.2 mL
Target:	Netrin 1 (NTN1)
Binding Specificity:	AA 181-195, Secreted
Reactivity:	Human, Mouse, Rat
Host:	Rabbit
Clonality:	Polyclonal
Conjugate:	This Netrin 1 antibody is un-conjugated
Application:	Western Blotting (WB)

Product Details

Immunogen:	Immunogen: Synthetic peptide Immunogen Sequence: CRKMYNRPHRAPITK, corresponding to amino acid residues 181 - 195 of rat Netrin-1
Isotype:	IgG
Characteristics:	Anti-Netrin-1 Antibody (ABIN7043349, ABIN7044726 and ABIN7044727)) is a highly specific antibody directed against an epitope of the rat protein. The antibody can be used in western blot analysis. It has been designed to recognize Netrin-1 from human, mouse, and rat samples.
Purification:	Affinity purified on immobilized antigen.

Target Details

Target:	Netrin 1 (NTN1)
---------	-----------------

Target Details

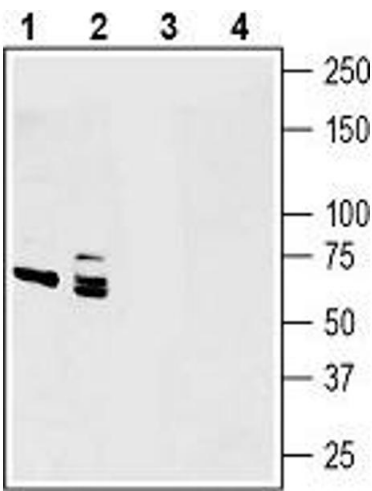
Alternative Name:	Netrin-1 (NTN1 Products)
Background:	Alternative names: NTN1, MRMV4
Gene ID:	114523
NCBI Accession:	NM_004822
UniProt:	Q924Z9
Pathways:	Regulation of Cell Size

Application Details

Application Notes:	Optimal working dilution should be determined by the investigator.
Restrictions:	For Research Use only

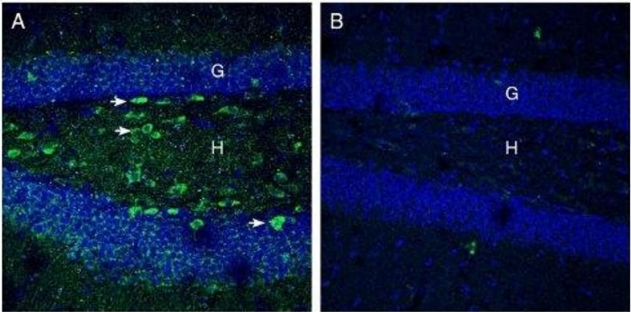
Handling

Format:	Lyophilized
Reconstitution:	25 µL, 50 µL or 0.2 mL double distilled water (DDW), depending on the sample size.
Concentration:	0.8 mg/mL
Buffer:	Reconstituted antibody contains phosphate buffered saline (PBS), pH 7.4, 1 % BSA, 0.05 % Sodium azide.
Preservative:	Sodium azide
Precaution of Use:	This product contains Sodium azide: a POISONOUS AND HAZARDOUS SUBSTANCE which should be handled by trained staff only.
Storage:	RT, 4 °C, -20 °C
Storage Comment:	<p>Storage before reconstitution: The antibody ships as a lyophilized powder at room temperature. Upon arrival, it should be stored at -20°C.</p> <p>Storage after reconstitution: The reconstituted solution can be stored at 4°C for up to 1 week. For longer periods, small aliquots should be stored at -20°C. Avoid multiple freezing and thawing. Centrifuge all antibody preparations before use (10000 x g 5 min).</p>



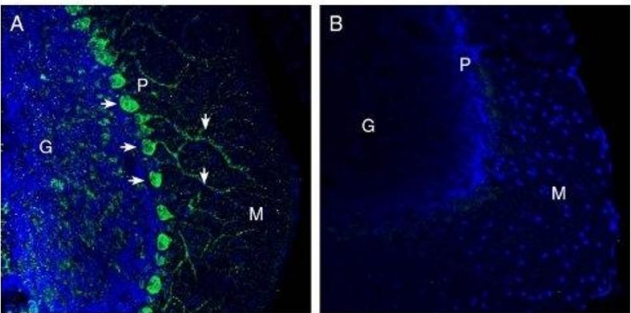
Western Blotting

Image 1. Western blot analysis of human U-87 MG glioblastoma cell line lysates (lanes 1 and 3) and human PANC-1 pancreas ductal adenocarcinoma cell line lysates (lanes 2 and 4): - 1, 2. Anti-Netrin-1 Antibody (ABIN7043349, ABIN7044726 and ABIN7044727), (1:200). 3, 4. Anti-Netrin-1 Antibody, preincubated with Netrin-1 Blocking Peptide (#BLP-NR121).



Immunohistochemistry

Image 2. Expression of Netrin-1 in mouse hippocampus. - Immunohistochemical staining of perfusion-fixed frozen mouse brain sections with Anti-Netrin-1 Antibody (ABIN7043349, ABIN7044726 and ABIN7044727), (1:300), followed by goat anti-rabbit-AlexaFluor-488. A. Netrin-1 immunoreactivity (green) appears in cells (horizontal arrows) in the hilus (H) in the hippocampal dentate gyrus. B. Pre-incubation of the antibody with Netrin-1 Blocking Peptide (BLP-NR121), suppressed staining. Cell nuclei are stained with DAPI (blue). G= granule layer, H = Hilus.



Immunohistochemistry

Image 3. Expression of Netrin-1 in mouse cerebellum. - Immunohistochemical staining of perfusion-fixed frozen mouse brain sections with Anti-Netrin-1 Antibody (ABIN7043349, ABIN7044726 and ABIN7044727), (1:300), followed by goat anti-rabbit-AlexaFluor-488. Netrin-1 immunoreactivity (green) appears in Purkinje cell soma (horizontal arrows) and in Purkinje dendrites (vertical arrows). B. Pre-incubation of the antibody with Netrin-1 Blocking Peptide (BLP-NR121), suppressed staining. Cell nuclei are stained with DAPI (blue). G= granule layer, P = Purkinje layer, M = molecular layer

Images

Please check the [product details page](#) for more images. Overall 4 images are available for ABIN7043349.