

Datasheet for ABIN7043353

anti-Neuregulin 1 antibody (Extracellular, N-Term)[Go to Product page](#)**3** Images

Overview

Quantity:	25 µL
Target:	Neuregulin 1 (NRG1)
Binding Specificity:	AA 87-101, Extracellular, N-Term
Reactivity:	Human, Rat, Mouse
Host:	Rabbit
Clonality:	Polyclonal
Conjugate:	This Neuregulin 1 antibody is un-conjugated
Application:	Western Blotting (WB), Immunohistochemistry (IHC), Immunofluorescence (IF)

Product Details

Immunogen:	Immunogen: Synthetic peptide
	Immunogen Sequence: (C)KIQKKPGKSELRLINK, corresponding to amino acid residues 87-101 of human Neuregulin-1
Isotype:	IgG
Cross-Reactivity (Details):	This antibody will recognize Neuregulin-1 Type I, Type II and Type IV. It will not recognize Neuregulin-1 Type III.
Characteristics:	Anti-NRG1 (Neuregulin-1) (extracellular) Antibody (ABIN7043353, ABIN7044718 and ABIN7044719)) is a highly specific antibody directed against an epitope of the human protein. The antibody can be used in western blot and immunohistochemistry applications. The antibody recognizes an extracellular epitope and could potentially detect the protein in living cells. It has been designed to recognize Neuregulin-1 from rat, human, and mouse samples.

Product Details

	This antibody will recognize NRG1 Type I, Type II and Type IV. It will not recognize Neuregulin-1 Type III.
Purification:	Affinity purified on immobilized antigen.

Target Details

Target:	Neuregulin 1 (NRG1)
Alternative Name:	NRG1 (Neuregulin-1) (NRG1 Products)
Background:	Alternative names: NRG1 (Neuregulin-1) , Glial growth factor, GGF, Heregulin, HRG, Sensory and motor neuron derived factor, SMDF, Neu differentiation factor, NDF
Gene ID:	3084
NCBI Accession:	NM_001159995
UniProt:	Q02297
Pathways:	RTK Signaling , Fc-epsilon Receptor Signaling Pathway , EGFR Signaling Pathway , Neurotrophin Signaling Pathway , Regulation of Muscle Cell Differentiation

Application Details

Application Notes:	Optimal working dilution should be determined by the investigator.
Restrictions:	For Research Use only

Handling

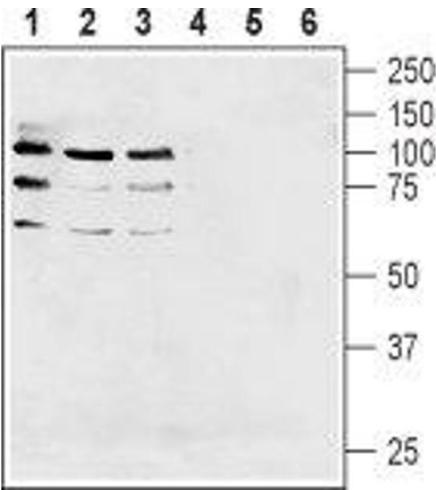
Format:	Lyophilized
Reconstitution:	25 µL, 50 µL or 0.2 mL double distilled water (DDW), depending on the sample size.
Concentration:	0.8 mg/mL
Buffer:	Reconstituted antibody contains phosphate buffered saline (PBS), pH 7.4, 1 % BSA, 0.05 % Sodium azide.
Preservative:	Sodium azide
Precaution of Use:	This product contains Sodium azide: a POISONOUS AND HAZARDOUS SUBSTANCE which should be handled by trained staff only.
Storage:	RT,4 °C,-20 °C

Handling

Storage Comment: Storage before reconstitution: The antibody ships as a lyophilized powder at room temperature. Upon arrival, it should be stored at -20°C.

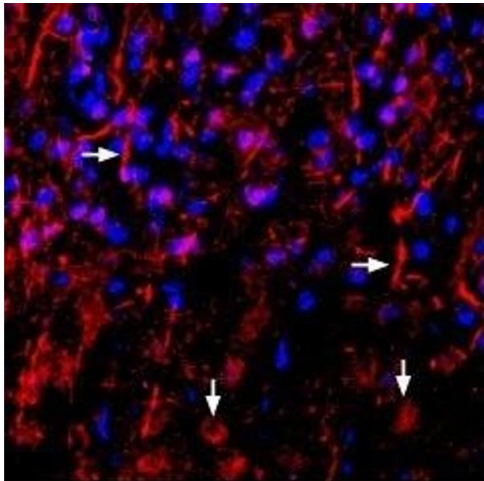
Storage after reconstitution: The reconstituted solution can be stored at 4°C for up to 1 week. For longer periods, small aliquots should be stored at -20°C. Avoid multiple freezing and thawing. Centrifuge all antibody preparations before use (10000 x g 5 min).

Images



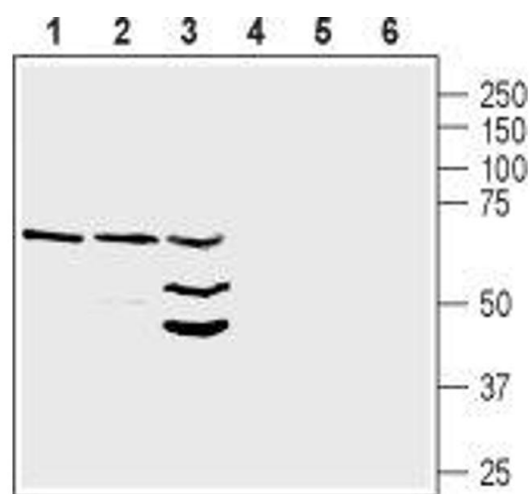
Western Blotting

Image 1. Western blot analysis of human MCF-7 breast adenocarcinoma cell lysate (lanes 1 and 4), human U87-MG glioblastoma cell lysate (lanes 2 and 5) and human MDA-231 breast adenocarcinoma cell lysate (lanes 3 and 6): - 1-3. Anti-NRG1 (Neuregulin-1) (extracellular) Antibody (ABIN7043353, ABIN7044718 and ABIN7044719), (1:200). 4-6. Anti-NRG1 (Neuregulin-1) (extracellular) Antibody, preincubated with NRG1/Neuregulin-1 (extracellular) Blocking Peptide (#BLP-NR111).



Immunohistochemistry

Image 2. Expression of Neuregulin-1 in rat neocortex - Immunohistochemical staining of perfusion-fixed frozen rat brain sections using Anti-NRG1 (Neuregulin-1) (extracellular) Antibody (ABIN7043353, ABIN7044718 and ABIN7044719), (1:1000), followed by anti-rabbit-biotinylated antibody and streptavidin-Cy3 (red). Neuregulin-1 staining is strong in processes of various cell types (horizontal arrows) and less intense in neuron-shaped soma (vertical arrows). Nuclei are stained with DAPI (blue).



Western Blotting

Image 3. Western blot analysis of rat heart lysate (lanes 1 and 4), mouse heart membranes (lanes 2 and 5) and mouse brain lysate (lanes 3 and 6): - 1-3. Anti-NGR1 (Neuregulin-1) (extracellular) Antibody (ABIN7043353, ABIN7044718 and ABIN7044719), (1:200).4-6. Anti-NGR1 (Neuregulin-1) (extracellular) Antibody, preincubated with NRG1/Neuregulin-1 (extracellular) Blocking Peptide (#BLP-NR111).