

Datasheet for ABIN7043369  
**anti-NrCAM antibody (Extracellular, N-Term)**[Go to Product page](#)

## 3 Images

## Overview

Quantity:	50 µL
Target:	NrCAM (NRCAM)
Binding Specificity:	AA 583-597, Extracellular, N-Term
Reactivity:	Mouse, Human, Rat
Host:	Rabbit
Clonality:	Polyclonal
Conjugate:	This NrCAM antibody is un-conjugated
Application:	Western Blotting (WB)

## Product Details

Immunogen:	Immunogen: Synthetic peptide Immunogen Sequence: (C)KDNGLPN DERFSVD, corresponding to amino acid residues 583-597 of rat NrCAM
Isotype:	IgG
Characteristics:	Anti-NrCAM (extracellular) Antibody (ABIN7043369, ABIN7044690 and ABIN7044691)) is a highly specific antibody directed against an epitope of the rat protein. The antibody can be used in western blot analysis. It has been designed to recognize NrCAM from human, rat, and mouse samples.
Purification:	Affinity purified on immobilized antigen.

## Target Details

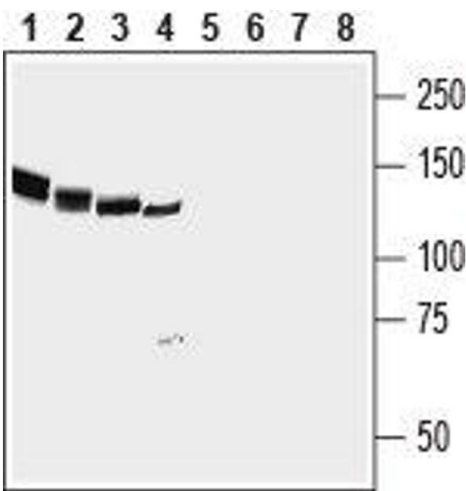
Target:	NrCAM (NRCAM)
Alternative Name:	NrCAM ( <a href="#">NRCAM Products</a> )
Background:	Alternative names: NrCAM, Neuronal cell adhesion molecule, Nr-CAM, NgCAM-related cell adhesion molecule, Ankyrin-binding cell adhesion molecule, Neuronal surface protein Bravo, Hbravo
Gene ID:	497815
NCBI Accession:	<a href="#">NM_001037132</a>
UniProt:	<a href="#">P97686</a>
Pathways:	<a href="#">Regulation of Cell Size</a>

## Application Details

Application Notes:	Optimal working dilution should be determined by the investigator.
Restrictions:	For Research Use only

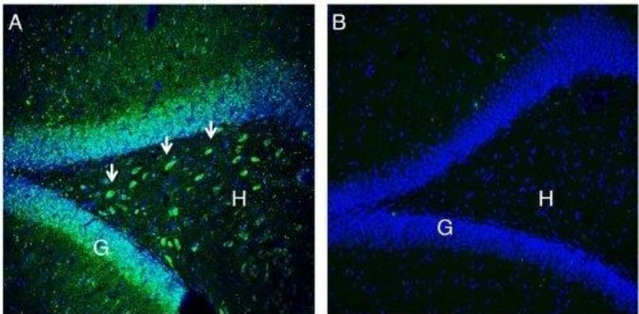
## Handling

Format:	Lyophilized
Reconstitution:	25 µL, 50 µL or 0.2 mL double distilled water (DDW), depending on the sample size.
Concentration:	0.8 mg/mL
Buffer:	Reconstituted antibody contains phosphate buffered saline (PBS), pH 7.4, 1 % BSA, 0.05 % Sodium azide.
Preservative:	Sodium azide
Precaution of Use:	This product contains Sodium azide: a POISONOUS AND HAZARDOUS SUBSTANCE which should be handled by trained staff only.
Storage:	RT, 4 °C, -20 °C
Storage Comment:	<p>Storage before reconstitution: The antibody ships as a lyophilized powder at room temperature. Upon arrival, it should be stored at -20°C.</p> <p>Storage after reconstitution: The reconstituted solution can be stored at 4°C for up to 1 week. For longer periods, small aliquots should be stored at -20°C. Avoid multiple freezing and thawing. Centrifuge all antibody preparations before use (10000 x g 5 min).</p>



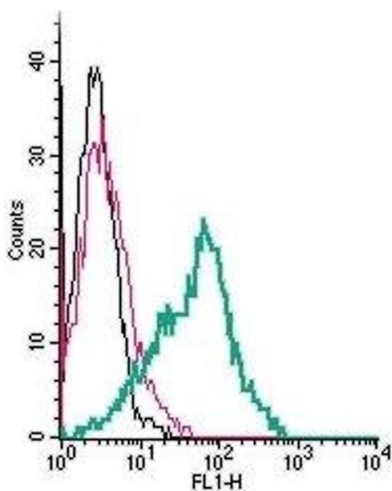
### Western Blotting

**Image 1.** Western blot analysis of rat brain (lanes 1 and 5), mouse brain (lanes 2 and 6), rat cerebellum (lanes 3 and 7) and human SH-SY5Y neuroblastoma cell (lanes 4 and 8) lysates: - 1-4. Anti-NrCAM (extracellular) Antibody (ABIN7043369, ABIN7044690 and ABIN7044691), (1:200). 5-8. Anti-NrCAM (extracellular) Antibody, preincubated with NrCAM (extracellular) Blocking Peptide (#BLP-NR045).



### Immunohistochemistry

**Image 2.** Expression of NrCAM in rat hippocampus. - Immunohistochemical staining of perfusion-fixed frozen rat brain sections with Anti-NrCAM (extracellular) Antibody (ABIN7043369, ABIN7044690 and ABIN7044691), (1:200), followed by goat anti-rabbit-AlexaFluor-488. A. Staining in the rat hippocampal dentate gyrus region, showed immunoreactivity (green) in neurons of the hilus (H, arrows). B. Pre-incubation of the antibody with NrCAM (extracellular) Blocking Peptide (BLP-NR045), suppressed staining. Cell nuclei are stained with DAPI (blue). G = granule layer.



### Flow Cytometry

**Image 3.** Cell surface detection of NrCAM by indirect flow cytometry in live intact human MEG-01 megakaryocytic leukemia cells: (black line) Cells. (red line) Cells + goat-anti-rabbit-FITC. (green line) Cells + Anti-NrCAM (extracellular) Antibody (ABIN7043369, ABIN7044690 and ABIN7044691), (2.5  $\mu$ g) + goat-anti-rabbit-FITC