

Datasheet for ABIN7043373  
**anti-NPY2R antibody (C-Term, Intracellular)**

## 3 Images

[Go to Product page](#)

## Overview

Quantity:	25 µL
Target:	NPY2R
Binding Specificity:	AA 346-364, C-Term, Intracellular
Reactivity:	Mouse, Rat
Host:	Rabbit
Clonality:	Polyclonal
Conjugate:	This NPY2R antibody is un-conjugated
Application:	Western Blotting (WB), Immunofluorescence (IF), Immunohistochemistry (IHC), Immunocytochemistry (ICC)

## Product Details

Immunogen:	Immunogen: Synthetic peptide Immunogen Sequence: CEQRLDAIHSEVSMTFKAK, corresponding to amino acid residues 346-364 of mouse NPY2R
Isotype:	IgG
Characteristics:	Anti-NPY2R Antibody is directed against an epitope of the mouse neuropeptide Y2 receptor (NPY2R). Anti-NPY2R Antibody (ABIN7043373, ABIN7044670 and ABIN7044671)) can be used in western blot analysis, immunohistochemistry, and immunocytochemical applications. It has been designed to recognize NPY2R from human, rat, and mouse samples.
Purification:	Affinity purified on immobilized antigen.

## Target Details

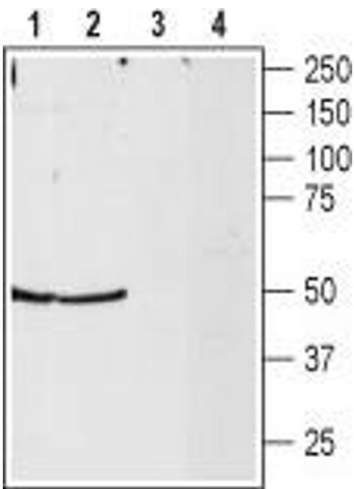
Target:	NPY2R
Alternative Name:	NPY2R ( <a href="#">NPY2R Products</a> )
Background:	Alternative names: NPY2R, Neuropeptide Y2 receptor, Neuropeptide Y receptor type 2, NPY Y2 receptor
Gene ID:	18167
NCBI Accession:	<a href="#">NM_000910</a>
UniProt:	<a href="#">P97295</a>
Pathways:	<a href="#">cAMP Metabolic Process</a> , <a href="#">Synaptic Membrane</a> , <a href="#">Feeding Behaviour</a>

## Application Details

Application Notes:	Optimal working dilution should be determined by the investigator.
Restrictions:	For Research Use only

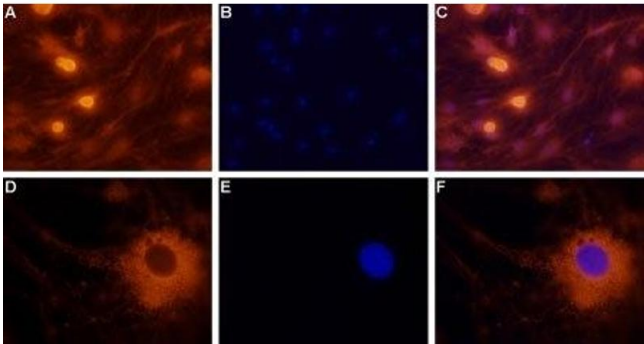
## Handling

Format:	Lyophilized
Reconstitution:	25 µL, 50 µL or 0.2 mL double distilled water (DDW), depending on the sample size.
Concentration:	1 mg/mL
Buffer:	Reconstituted antibody contains phosphate buffered saline (PBS), pH 7.4, 1 % BSA, 0.05 % Sodium azide.
Preservative:	Sodium azide
Precaution of Use:	This product contains Sodium azide: a POISONOUS AND HAZARDOUS SUBSTANCE which should be handled by trained staff only.
Storage:	RT, 4 °C, -20 °C
Storage Comment:	<p>Storage before reconstitution: The antibody ships as a lyophilized powder at room temperature. Upon arrival, it should be stored at -20°C.</p> <p>Storage after reconstitution: The reconstituted solution can be stored at 4°C for up to 1 week. For longer periods, small aliquots should be stored at -20°C. Avoid multiple freezing and thawing. Centrifuge all antibody preparations before use (10000 x g 5 min).</p>



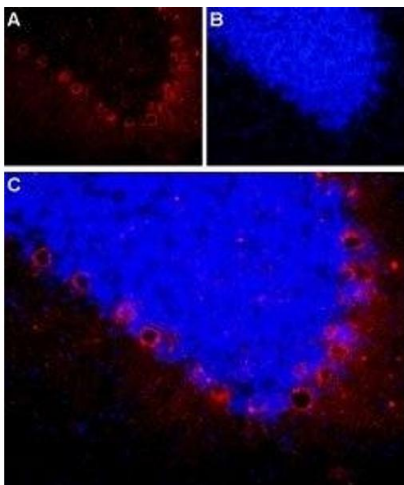
Western Blotting

**Image 1.** Western blot analysis of rat hippocampus and rat whole brain lysates: - 1,2. Anti-NPY2R Antibody (ABIN7043373, ABIN7044670 and ABIN7044671), (1:200).3,4. Anti-NPY2R Antibody, preincubated with NPY2R Blocking Peptide (#BLP-NR022).



Immunocytochemistry

**Image 2.** Expression of neuropeptide Y2 receptor in rat dorsal root ganglion cells - Immunocytochemical staining of rat dorsal root ganglion (DRG) neurons. A, D. A paraformaldehyde-fixed and permeabilized DRG primary culture was stained with Anti-NPY2R Antibody (ABIN7043373, ABIN7044670 and ABIN7044671), (1:100) followed by Alexa-555-conjugated goat anti-rabbit secondary antibody. B, E. Nuclear fluorescence staining of cells using the membrane-permeable DNA dye Hoechst 33342. C. Merged images of panels A and B. F. Merged images of panels D and E. Magnification: A-C: x20 E-F: x100



Immunohistochemistry

**Image 3.** Expression of neuropeptide Y2 receptor in rat cerebellum - Immunohistochemical staining of frozen section of rat cerebellum using Anti-NPY2R Antibody (ABIN7043373, ABIN7044670 and ABIN7044671), (1:100). NPY2R (red) is detected in Purkinje cells. B. Nuclei were stained using DAPI as the counterstain. C. Merged image of A and B.