

Datasheet for ABIN7043412  
**anti-ORAI1 antibody (2nd Extracellular Loop)**



[Go to Product page](#)

2 Images

Overview

Quantity:	25 µL
Target:	ORAI1
Binding Specificity:	2nd Extracellular Loop, AA 203-214
Reactivity:	Human
Host:	Rabbit
Clonality:	Polyclonal
Conjugate:	This ORAI1 antibody is un-conjugated
Application:	Western Blotting (WB), Immunohistochemistry (IHC), Flow Cytometry (FACS), Immunofluorescence (IF), Immunocytochemistry (ICC)

Product Details

Immunogen:	Immunogen: Synthetic peptide Immunogen Sequence: (C)KKQPGQPRPTSK, corresponding to amino acid residues 203-214 of human Orai1
Isotype:	IgG
Cross-Reactivity (Details):	Will not recognize mouse or rat Orai1.
Characteristics:	Anti-Human Orai1 (extracellular) Antibody (ABIN7043412, ABIN7044020 and ABIN7044021)) is a highly specific antibody directed against an epitope of the human protein. The antibody can be used in western blot, immunohistochemistry, immunocytochemistry, and indirect flow cytometry applications. It has been designed to recognize Orai1 from human samples only.
Purification:	Affinity purified on immobilized antigen.

## Target Details

---

Target:	Orai1
Alternative Name:	Orai1 ( <a href="#">ORAI1 Products</a> )
Background:	Alternative names: Orai1, TMEM142A, CRACM1, Calcium release-activated calcium channel protein 1
Gene ID:	84876
NCBI Accession:	<a href="#">NM_032790</a>
UniProt:	<a href="#">Q96D31</a>
Pathways:	<a href="#">TCR Signaling</a> , <a href="#">BCR Signaling</a>

## Application Details

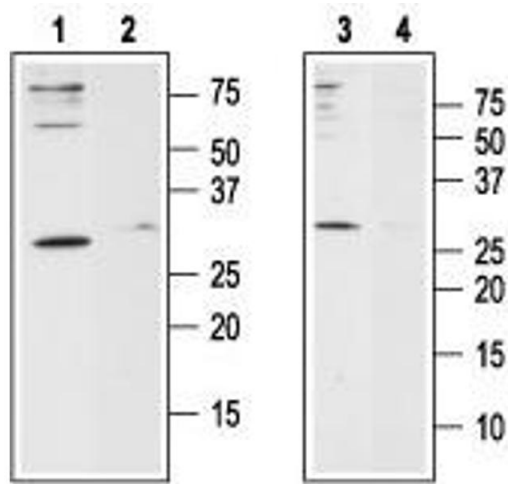
---

Application Notes:	Optimal working dilution should be determined by the investigator.
Restrictions:	For Research Use only

## Handling

---

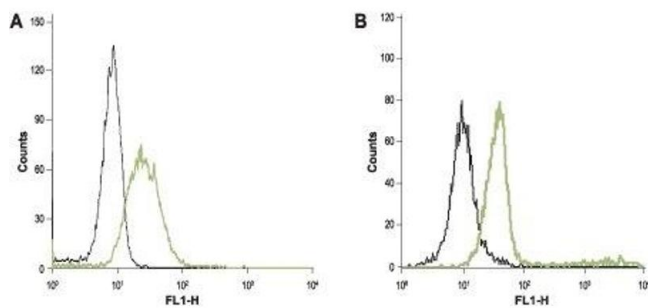
Format:	Lyophilized
Reconstitution:	25 µL, 50 µL or 0.2 mL double distilled water (DDW), depending on the sample size.
Concentration:	0.65 mg/mL
Buffer:	Reconstituted antibody contains phosphate buffered saline (PBS), pH 7.4, 1 % BSA, 0.05 % Sodium azide.
Preservative:	Sodium azide
Precaution of Use:	This product contains Sodium azide: a POISONOUS AND HAZARDOUS SUBSTANCE which should be handled by trained staff only.
Storage:	RT, 4 °C, -20 °C
Storage Comment:	Storage before reconstitution: The antibody ships as a lyophilized powder at room temperature. Upon arrival, it should be stored at -20°C. Storage after reconstitution: The reconstituted solution can be stored at 4°C for up to 1 week. For longer periods, small aliquots should be stored at -20°C. Avoid multiple freezing and thawing. Centrifuge all antibody preparations before use (10000 x g 5 min).



### Western Blotting

**Image 1.** Western blot analysis of human Jurkat T-cell leukemia cell line lysate (lanes 1 and 2) and human HL-60 acute promyelocytic leukemia cell line lysate (lanes 3 and 4):

- 1,3. Anti-Human Orai1 (extracellular) Antibody (ABIN7043412, ABIN7044020 and ABIN7044021), (1:200).
- 2,4. Anti-Human Orai1 (extracellular) Antibody, preincubated with Human Orai1 (extracellular) Blocking Peptide (#BLP-CC060).



### Flow Cytometry

**Image 2.** Cell surface detection of Orai1 in intact human HL-60 acute promyelocytic leukemia cells (A) and human Jurkat T-cell leukemia cells (B). (black line) Unstained cells. (green line) Cells + Anti-Human Orai1 (extracellular) Antibody (ABIN7043412, ABIN7044020 and ABIN7044021), (5-10  $\mu$ g antibody/ $0.5-1 \times 10^6$  cells).