



[Go to Product page](#)

Datasheet for ABIN7043424

anti-P2Y2 Receptor antibody (C-Term, Extracellular)

3 Images

Overview

Quantity:	50 µL
Target:	P2Y2 Receptor (LOC100009486)
Binding Specificity:	AA 11-24, C-Term, Extracellular
Reactivity:	Human, Mouse, Rat
Host:	Rabbit
Clonality:	Polyclonal
Application:	Flow Cytometry (FACS), Immunohistochemistry (IHC), Western Blotting (WB), Immunofluorescence (IF), Immunocytochemistry (ICC), Live Cell Imaging (LCI)

Product Details

Immunogen:	Immunogen: Synthetic peptide Immunogen Sequence: (CD)TINGTWEGDELGYK, corresponding to amino acid residues 11- 24 of rat P2RY2
Isotype:	IgG
Characteristics:	Anti-P2Y2 Receptor (extracellular) Antibody (ABIN7043424, ABIN7045138 and ABIN7045139)) is a highly specific antibody directed against an epitope of the rat protein. The antibody can be used in western blot, indirect live cell flow cytometry, live cell imaging, and immunohistochemistry applications. It has been designed to recognize P2RY2 from rat, mouse, and human samples.
Purification:	Affinity purified on immobilized antigen.

Target Details

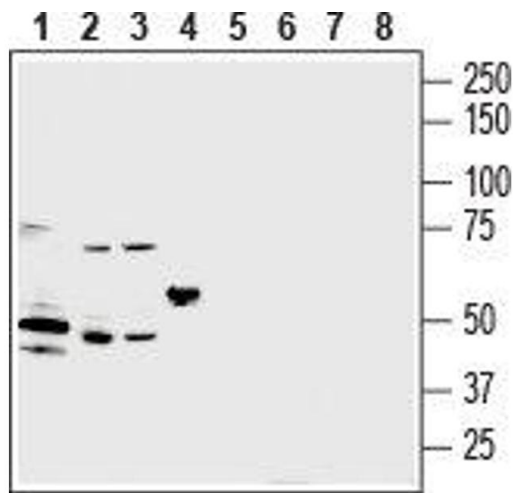
Target:	P2Y2 Receptor (LOC100009486)
Alternative Name:	P2Y2 Receptor (LOC100009486 Products)
Background:	Alternative names: P2Y2 Receptor, P2Y purinoceptor 2, P2RY2, P2U1
Gene ID:	29597
NCBI Accession:	NM_176072
UniProt:	P41232

Application Details

Application Notes:	Optimal working dilution should be determined by the investigator.
Restrictions:	For Research Use only

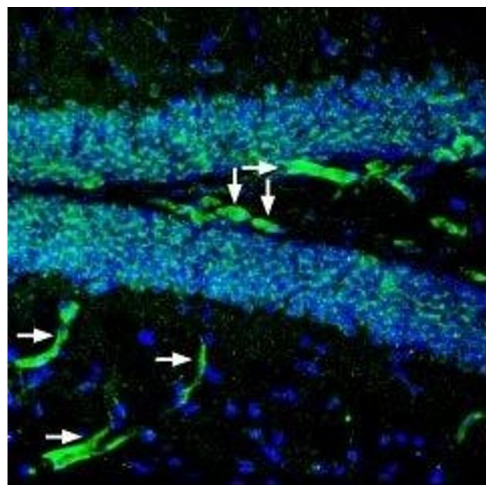
Handling

Format:	Lyophilized
Reconstitution:	25 µL, 50 µL or 0.2 mL double distilled water (DDW), depending on the sample size.
Concentration:	0.8 mg/mL
Buffer:	Reconstituted antibody contains phosphate buffered saline (PBS), pH 7.4, 1 % BSA, 0.05 % Sodium azide.
Preservative:	Sodium azide
Precaution of Use:	This product contains Sodium azide: a POISONOUS AND HAZARDOUS SUBSTANCE which should be handled by trained staff only.
Storage:	RT, 4 °C, -20 °C
Storage Comment:	Storage before reconstitution: The antibody ships as a lyophilized powder at room temperature. Upon arrival, it should be stored at -20°C. Storage after reconstitution: The reconstituted solution can be stored at 4°C for up to 1 week. For longer periods, small aliquots should be stored at -20°C. Avoid multiple freezing and thawing. Centrifuge all antibody preparations before use (10000 x g 5 min).



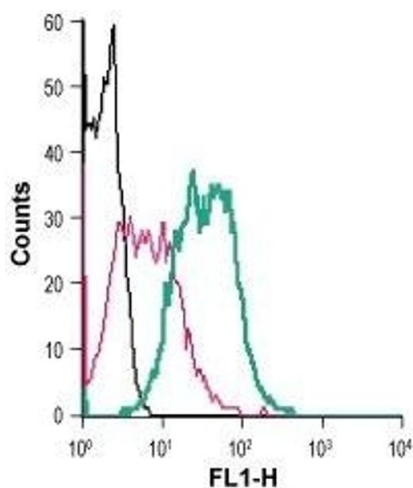
Western Blotting

Image 1. Western blot analysis of mouse heart lysate (lanes 1 and 5), mouse brain lysate (lanes 2 and 6), rat brain lysate (lanes 3 and 7) and rat lung lysate (lanes 4 and 8): - 1-4. Anti-P2Y2 Receptor (extracellular) Antibody (ABIN7043424, ABIN7045138 and ABIN7045139), (1:200).5-8. Anti-P2Y2 Receptor (extracellular) Antibody, preincubated with P2Y2 Receptor (extracellular) Blocking Peptide (#BLP-PR102).



Immunohistochemistry

Image 2. Expression of P2Y2 in mouse hippocampus - Immunohistochemical staining of perfusion-fixed frozen mouse brain sections with Anti-P2Y2 Receptor (extracellular) Antibody (ABIN7043424, ABIN7045138 and ABIN7045139), (1:200), followed by goat-anti-rabbit-AlexaFluor-488. P2RY2 immunoreactivity (green) in the hippocampal dentate gyrus appears in blood vessels (horizontal arrows) and in neurons (vertical arrows). Cell nuclei are stained with DAPI (blue).



Flow Cytometry

Image 3. Cell surface detection of P2RY2 in live intact mouse J774 macrophage cells: (black line) Cells. (red line) Cells + rabbit IgG isotype control + goat-anti-rabbit-FITC. (green line) Cells + Anti-P2Y2 Receptor (extracellular) Antibody (ABIN7043424, ABIN7045138 and ABIN7045139), (5 µg) + goat-anti-rabbit-FITC.