



Datasheet for ABIN7043425

## anti-P2Y2 Receptor antibody (C-Term, Extracellular) (FITC)



[Go to Product page](#)

### 2 Images

#### Overview

Quantity:	50 µL
Target:	P2Y2 Receptor (LOC100009486)
Binding Specificity:	AA 11-24, C-Term, Extracellular
Reactivity:	Human, Mouse, Rat
Host:	Rabbit
Clonality:	Polyclonal
Conjugate:	This P2Y2 Receptor antibody is conjugated to FITC
Application:	Flow Cytometry (FACS)

#### Product Details

Immunogen:	Immunogen: Synthetic peptide Immunogen Sequence: (CD)TINGTWEGDELGYK, corresponding to amino acid residues 11-24 of rat P2RY2
Isotype:	IgG
Characteristics:	Anti-P2Y2 Receptor (extracellular) Antibody (ABIN7043424, ABIN7045138 and ABIN7045139)) is a highly specific antibody directed against an epitope of the rat protein. The antibody can be used in western blot, indirect live cell flow cytometry, and immunohistochemistry applications. It has been designed to recognize P2RY2 from rat, mouse, and human samples. \nAnti-P2Y2 Receptor (extracellular)-FITC Antibody (ABIN7043424, ABIN7045138 and ABIN7045139)-F) is directly conjugated to fluorescein isothiocyanate (FITC). This labeled antibody can be used in immunofluorescent applications such as direct flow cytometry using live cells.

## Product Details

---

Purification: Affinity purified on immobilized antigen.

## Target Details

---

Target: P2Y2 Receptor (LOC100009486)

Alternative Name: P2Y2 Receptor ([LOC100009486 Products](#))

Background: Alternative names: P2Y2 Receptor, P2Y purinoceptor 2, P2RY2, P2U1

Gene ID: 29597

NCBI Accession: [NM\\_176072](#)

UniProt: [P41232](#)

## Application Details

---

Application Notes: Optimal working dilution should be determined by the investigator.

Restrictions: For Research Use only

## Handling

---

Format: Lyophilized

Reconstitution: 50 µL double distilled water (DDW).

Concentration: 1 mg/mL

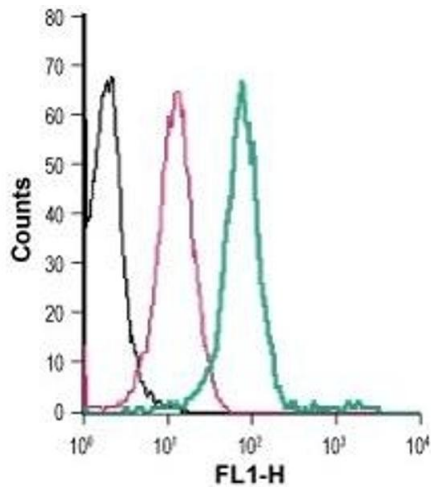
Buffer: Reconstituted antibody contains phosphate buffered saline (PBS), pH 7.4, 1 % BSA, 0.05 % Sodium azide.

Preservative: Sodium azide

Precaution of Use: This product contains Sodium azide: a POISONOUS AND HAZARDOUS SUBSTANCE which should be handled by trained staff only.

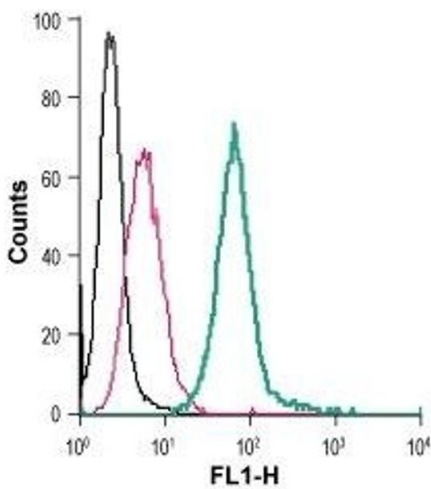
Storage: RT, 4 °C, -20 °C

Storage Comment: Storage before reconstitution: The antibody ships as a lyophilized powder at room temperature. Upon arrival, it should be stored at -20°C.  
Storage after reconstitution: The reconstituted solution can be stored at 4°C, protected from the light, for up to 1 week. For longer periods, small aliquots should be stored at -20°C. Avoid multiple freezing and thawing. Centrifuge all antibody preparations before use (10000 x g 5 min).



### Flow Cytometry

**Image 1.** Cell surface detection of P2RY2 in live intact human THP-1 monocytic leukemia cells: (black line) Cells.(red line) Cells + Rabbit IgG isotype control-FITC.(green line) Cells + Anti-P2Y2 Receptor (extracellular)-FITC Antibody (ABIN7043425, ABIN7045691, ABIN7045692 and ABIN7045693), (5 µg).



### Flow Cytometry

**Image 2.** Cell surface detection of P2RY2 in live intact mouse J774 macrophage cells: (black line) Cells.(red line) Cells + Rabbit IgG isotype control-FITC.(green line) Cells + Anti-P2Y2 Receptor (extracellular)-FITC Antibody (ABIN7043425, ABIN7045691, ABIN7045692 and ABIN7045693), (2.5 µg).