

Datasheet for ABIN7043426

anti-PANX1 antibody (Intracellular, N-Term)[Go to Product page](#)

2 Images

Overview

Quantity:	25 µL
Target:	PANX1
Binding Specificity:	AA 18-31, Intracellular, N-Term
Reactivity:	Human, Mouse, Rat
Host:	Rabbit
Clonality:	Polyclonal
Conjugate:	This PANX1 antibody is un-conjugated
Application:	Western Blotting (WB), Immunohistochemistry (IHC), Immunofluorescence (IF)

Product Details

Immunogen:	Immunogen: Synthetic peptide Immunogen Sequence: (C)KEPTEPKFKGLRLE, corresponding to amino acid residues 18- 31 of human PANX1
Isotype:	IgG
Characteristics:	Anti-Pannexin 1 Antibody is directed against an epitope of human Pannexin 1. Anti-Pannexin 1 Antibody (ABIN7043426, ABIN7044100 and ABIN7044101)) can be used in western blot and immunohistochemistry applications. It was designed to recognize PANX1 from rat, mouse and human samples.
Purification:	Affinity purified on immobilized antigen.

Target Details

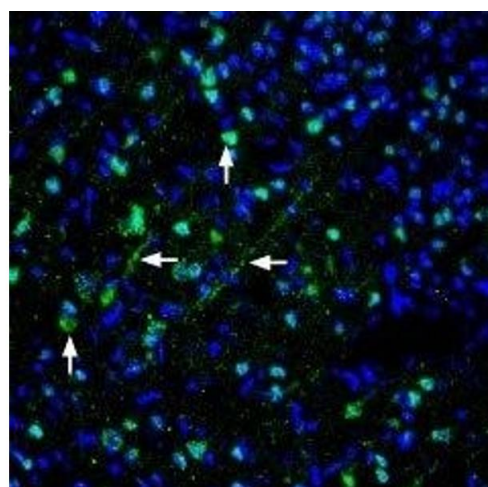
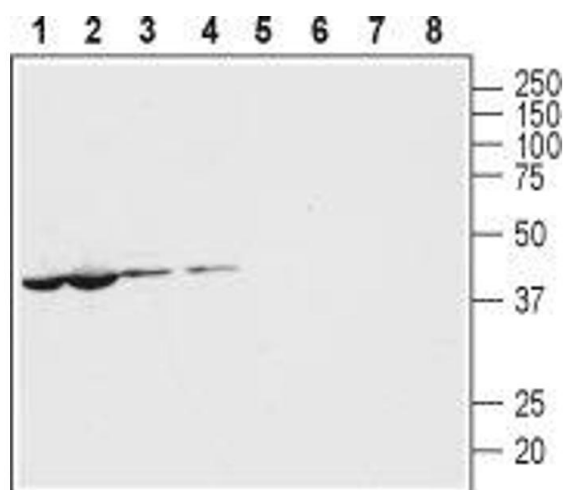
Target:	PANX1
Alternative Name:	Pannexin 1 (PANX1 Products)
Background:	Alternative names: Pannexin 1, PANX1, PX1, MRS1, UNQ2529
Gene ID:	24145
NCBI Accession:	NM_015368
UniProt:	Q96RD7

Application Details

Application Notes:	Optimal working dilution should be determined by the investigator.
Restrictions:	For Research Use only

Handling

Format:	Lyophilized
Reconstitution:	25 µL, 50 µL or 0.2 mL double distilled water (DDW), depending on the sample size.
Concentration:	0.8 mg/mL
Buffer:	Reconstituted antibody contains phosphate buffered saline (PBS), pH 7.4, 1 % BSA, 0.05 % Sodium azide.
Preservative:	Sodium azide
Precaution of Use:	This product contains Sodium azide: a POISONOUS AND HAZARDOUS SUBSTANCE which should be handled by trained staff only.
Storage:	RT, 4 °C, -20 °C
Storage Comment:	<p>Storage before reconstitution: The antibody ships as a lyophilized powder at room temperature. Upon arrival, it should be stored at -20°C.</p> <p>Storage after reconstitution: The reconstituted solution can be stored at 4°C for up to 1 week. For longer periods, small aliquots should be stored at -20°C. Avoid multiple freezing and thawing. Centrifuge all antibody preparations before use (10000 x g 5 min).</p>



Western Blotting

Image 1. Western blot analysis of mouse (lanes 1 and 5) and rat (lanes 2 and 6) heart lysates and mouse (lanes 3 and 7) and rat (lanes 4 and 8) brain membranes: - 1-4. Anti-Pannexin 1 Antibody (ABIN7043426, ABIN7044100 and ABIN7044101), (1:400). 5-8. Anti-Pannexin 1 Antibody, preincubated with Pannexin 1 Blocking Peptide (#BLP-CC234).

Immunohistochemistry

Image 2. Expression of Pannexin 1 in rat cortex - Immunohistochemical staining of immersion-fixed, free floating rat brain frozen sections using Anti-Pannexin 1 Antibody (ABIN7043426, ABIN7044100 and ABIN7044101), (1:300). PANX1 staining (green) is apparent in cells with neuronal outline (vertical arrows) and apical dendrites (horizontal arrows) in the parietal cingulate cortex region. Cell nuclei are stained with DAPI (blue).