



[Go to Product page](#)

Datasheet for ABIN7043427

anti-Pannexin 2 antibody (1st Extracellular Loop)

2 Images

Overview

Quantity:	50 µL
Target:	Pannexin 2 (PANX2)
Binding Specificity:	1st Extracellular Loop, AA 76-90
Reactivity:	Human, Mouse, Rat
Host:	Rabbit
Clonality:	Polyclonal
Application:	Western Blotting (WB), Immunofluorescence (IF), Immunocytochemistry (ICC), Live Cell Imaging (LCI)

Product Details

Immunogen:	Immunogen: Synthetic peptide Immunogen Sequence: (C)EEPIY(S)YTPHNFTRD, corresponding to amino acid residues 76-90 of human PANX2
Isotype:	IgG
Characteristics:	Anti-Pannexin 2 (extracellular) Antibody (ABIN7043427, ABIN7044096 and ABIN7044097)) is a highly specific antibody directed against an epitope of the human protein. The antibody can be used in western blot and immunocytochemistry applications. It has been designed to recognize PANX2 from rat, mouse, and human samples.
Purification:	Affinity purified on immobilized antigen.

Target Details

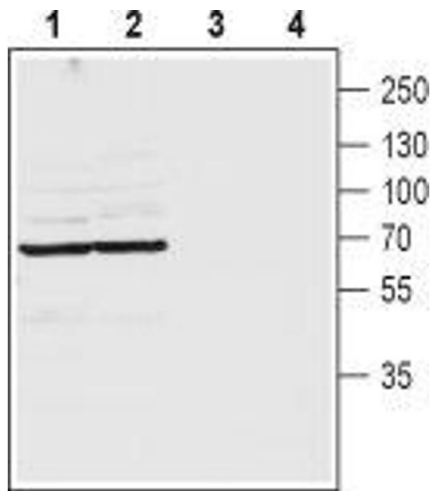
Target:	Pannexin 2 (PANX2)
Alternative Name:	Pannexin 2 (PANX2 Products)
Background:	Alternative names: Pannexin 2, PANX2, PX2, hPANX2
Gene ID:	56666
NCBI Accession:	NM_052839
UniProt:	Q96RD6

Application Details

Application Notes:	Optimal working dilution should be determined by the investigator.
Restrictions:	For Research Use only

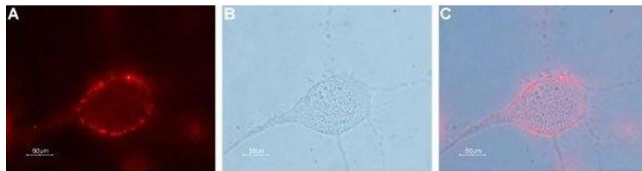
Handling

Format:	Lyophilized
Reconstitution:	25 µL, 50 µL or 0.2 mL double distilled water (DDW), depending on the sample size.
Concentration:	0.8 mg/mL
Buffer:	Reconstituted antibody contains phosphate buffered saline (PBS), pH 7.4, 1 % BSA, 0.05 % Sodium azide.
Preservative:	Sodium azide
Precaution of Use:	This product contains Sodium azide: a POISONOUS AND HAZARDOUS SUBSTANCE which should be handled by trained staff only.
Storage:	RT, 4 °C, -20 °C
Storage Comment:	Storage before reconstitution: The antibody ships as a lyophilized powder at room temperature. Upon arrival, it should be stored at -20°C. Storage after reconstitution: The reconstituted solution can be stored at 4°C for up to 1 week. For longer periods, small aliquots should be stored at -20°C. Avoid multiple freezing and thawing. Centrifuge all antibody preparations before use (10000 x g 5 min).



Western Blotting

Image 1. Western blot analysis of rat (lanes 1 and 3) and mouse (lanes 2 and 4) brain lysates: - 1,2. Anti-Pannexin 2 (extracellular) Antibody (ABIN7043427, ABIN7044096 and ABIN7044097), (1:200).3,4. Anti-Pannexin 2 (extracellular) Antibody, preincubated with Pannexin 2 (extracellular) Blocking Peptide (#BLP-CC232).



Immunocytochemistry

Image 2. Expression of Pannexin 2 in human U-87 MG glioblastoma cell line - Cell surface detection of Pannexin 2 in live intact human U-87 MG glioblastoma cells. A. Cells were stained with Anti-Pannexin 2 (extracellular) Antibody (ABIN7043427, ABIN7044096 and ABIN7044097), (1:50), followed by goat anti-rabbit-AlexaFluor-594 secondary antibody (red). B. Live view of the cells. C. Merge of A and B.