



[Go to Product page](#)

Datasheet for ABIN7043429

anti-PTH1R antibody (1st Extracellular Loop)

4 Images

Overview

| | |
|----------------------|---|
| Quantity: | 50 µL |
| Target: | PTH1R |
| Binding Specificity: | 1st Extracellular Loop, AA 241-255 |
| Reactivity: | Human, Rat, Mouse |
| Host: | Rabbit |
| Clonality: | Polyclonal |
| Conjugate: | This PTH1R antibody is un-conjugated |
| Application: | Western Blotting (WB), Immunohistochemistry (IHC), Immunofluorescence (IF), Immunocytochemistry (ICC), Live Cell Imaging (LCI) |

Product Details

| | |
|------------------|--|
| Immunogen: | Immunogen: Synthetic peptide Immunogen Sequence: (C)DAVLYSGFTLDEAER, corresponding to amino acid residues 241-255 of rat PTH1R |
| Isotype: | IgG |
| Characteristics: | Anti-PTH1R (extracellular) Antibody (ABIN7043429, ABIN7045112 and ABIN7045113)) is a highly specific antibody directed against an epitope of the rat Parathyroid hormone 1 receptor. The antibody can be used in western blot, immunohistochemistry, and live cell imaging applications. It has been designed to recognize PTH1R from human, mouse, and rat samples. |
| Purification: | Affinity purified on immobilized antigen. |

Target Details

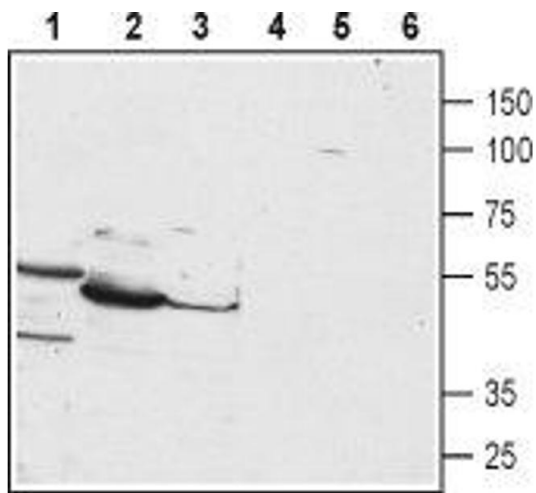
| | |
|-------------------|---|
| Target: | PTH1R |
| Alternative Name: | PTH1R (PTH1R Products) |
| Background: | Alternative names: PTH1R, Parathyroid hormone 1 receptor, PTH/PTHrP type I receptor, PTH1 receptor, PTHR, PTHR1 |
| Gene ID: | 56813 |
| NCBI Accession: | NM_000316 |
| UniProt: | P25961 |
| Pathways: | Regulation of Carbohydrate Metabolic Process |

Application Details

| | |
|--------------------|--|
| Application Notes: | Optimal working dilution should be determined by the investigator. |
| Restrictions: | For Research Use only |

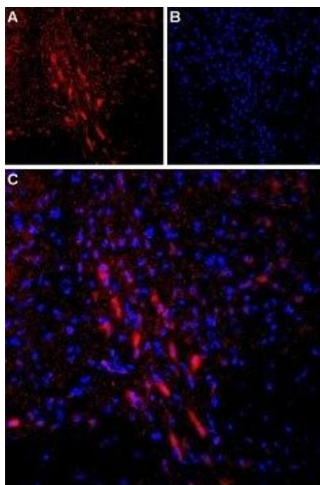
Handling

| | |
|--------------------|---|
| Format: | Lyophilized |
| Reconstitution: | 25 µL, 50 µL or 0.2 mL double distilled water (DDW), depending on the sample size. |
| Concentration: | 0.85 mg/mL |
| Buffer: | Reconstituted antibody contains phosphate buffered saline (PBS), pH 7.4, 1 % BSA, 0.05 % Sodium azide. |
| Preservative: | Sodium azide |
| Precaution of Use: | This product contains Sodium azide: a POISONOUS AND HAZARDOUS SUBSTANCE which should be handled by trained staff only. |
| Storage: | RT, 4 °C, -20 °C |
| Storage Comment: | Storage before reconstitution: The antibody ships as a lyophilized powder at room temperature. Upon arrival, it should be stored at -20°C. Storage after reconstitution: The reconstituted solution can be stored at 4°C for up to 1 week. For longer periods, small aliquots should be stored at -20°C. Avoid multiple freezing and thawing. Centrifuge all antibody preparations before use (10000 x g 5 min). |



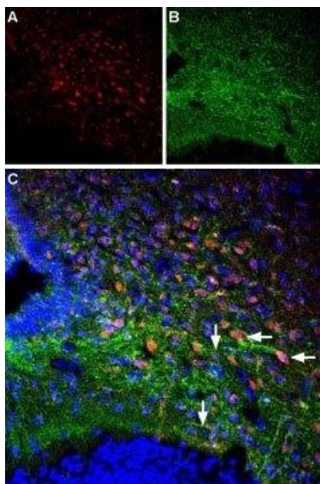
Western Blotting

Image 1. Western blot analysis of HepG2 (lanes 1 and 4), mouse liver (lanes 2 and 5) and rat liver (lanes 3 and 6) lysates: 1-3. Anti-PTH1R (extracellular) Antibody (ABIN7043429, ABIN7045112 and ABIN7045113), (1:200). 4-6. Anti-PTH1R (extracellular) Antibody, preincubated with PTH1R (extracellular) Blocking Peptide (#BLP-PR051).



Immunohistochemistry

Image 2. Expression of Parathyroid hormone receptor 1 in rat brain - Immunohistochemical staining of rat dorsal Raphe nucleus using Anti-PTH1R (extracellular) Antibody (ABIN7043429, ABIN7045112 and ABIN7045113). A. PTH1R (red) staining is detected in Raphe neurons (arrows). B. Nucleus staining using DAPI as the counterstain (blue). C. Merged images of A and B.



Immunohistochemistry

Image 3. Multiplex staining of Parathyroid hormone receptor 1 and Orexin receptor 1 in rat ventromedial hypothalamus - Immunohistochemical staining of perfusion-fixed frozen rat brain sections using Anti-Orexin Receptor 1-ATTO Fluor-488 Antibody (ABIN7043286), (1:60) and Anti-PTH1R (extracellular) Antibody (ABIN7043429, ABIN7045112 and ABIN7045113), (1:60). A. Sections were incubated with Anti-PTH1R (extracellular) Antibody, followed by donkey-anti-rabbit-Cy3 (red). B. The same sections were incubated with Anti-Orexin Receptor 1-ATTO Fluor-488 Antibody, (green). C. Merge of A and B shows staining of Orexin receptor 1 in nerve fibers (vertical arrows) while Parathyroid hormone receptor 1 is apparent on cell bodies (horizontal arrows). Cell nuclei are stained with DAPI (blue).

Images

Please check the [product details page](#) for more images. Overall 4 images are available for ABIN7043429.