

Datasheet for ABIN7043435

anti-Plexin A1 antibody (Extracellular, N-Term)[Go to Product page](#)**3** Images

Overview

Quantity:	25 µL
Target:	Plexin A1 (PLXNA1)
Binding Specificity:	AA 623-636, Extracellular, N-Term
Reactivity:	Human, Mouse, Rat
Host:	Rabbit
Clonality:	Polyclonal
Conjugate:	This Plexin A1 antibody is un-conjugated
Application:	Immunohistochemistry (IHC), Western Blotting (WB), Immunofluorescence (IF)

Product Details

Immunogen:	Immunogen: Synthetic peptide Immunogen Sequence: (C)REVAPITRGQGDQR, corresponding to amino acid residues 623-636 of human PLXNA1
Isotype:	IgG
Characteristics:	Anti-Plexin-A1 (extracellular) Antibody (ABIN7043435, ABIN7045128 and ABIN7045129)) is a highly specific antibody directed against an epitope of the human protein. The antibody can be used in western blot and immunohistochemistry applications. The antibody recognizes an extracellular epitope and is thus ideal for detecting the protein in living cells. It has been designed to recognize PLXNA1 from mouse, rat and human samples.
Purification:	Affinity purified on immobilized antigen.

Target Details

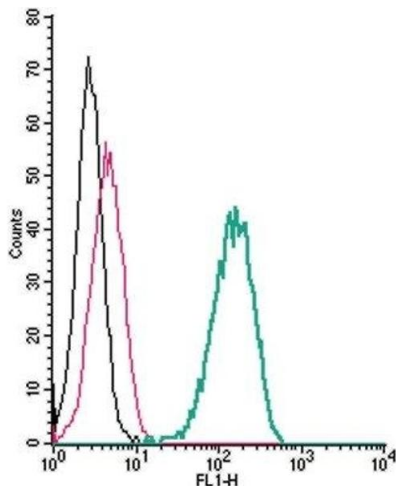
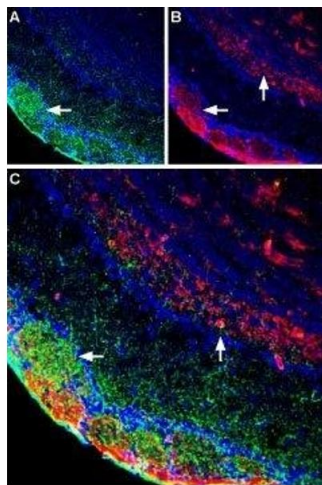
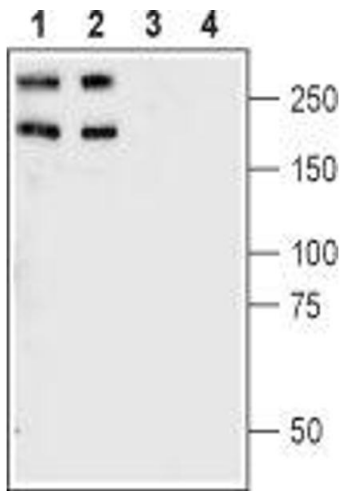
Target:	Plexin A1 (PLXNA1)
Alternative Name:	Plexin-A1 (PLXNA1 Products)
Background:	Alternative names: Plexin-A1, PLXNA1, PLXN1, Semaphorin receptor NOV
Gene ID:	5361
NCBI Accession:	NM_032242
UniProt:	Q9UIW2
Pathways:	Smooth Muscle Cell Migration

Application Details

Application Notes:	Optimal working dilution should be determined by the investigator.
Restrictions:	For Research Use only

Handling

Format:	Lyophilized
Reconstitution:	25 µL, 50 µL or 0.2 mL double distilled water (DDW), depending on the sample size.
Concentration:	0.8 mg/mL
Buffer:	Reconstituted antibody contains phosphate buffered saline (PBS), pH 7.4, 1 % BSA, 0.05 % Sodium azide.
Preservative:	Sodium azide
Precaution of Use:	This product contains Sodium azide: a POISONOUS AND HAZARDOUS SUBSTANCE which should be handled by trained staff only.
Storage:	RT, 4 °C, -20 °C
Storage Comment:	Storage before reconstitution: The antibody ships as a lyophilized powder at room temperature. Upon arrival, it should be stored at -20°C. Storage after reconstitution: The reconstituted solution can be stored at 4°C for up to 1 week. For longer periods, small aliquots should be stored at -20°C. Avoid multiple freezing and thawing. Centrifuge all antibody preparations before use (10000 x g 5 min).



Western Blotting

Image 1. Western blot analysis of rat (lanes 1 and 3) and mouse (lanes 2 and 4) brain synaptosomal fractions: - 1,2. Anti-Plexin-A1 (extracellular) Antibody (ABIN7043435, ABIN7045128 and ABIN7045129), (1:400).3,4. Anti-Plexin-A1 (extracellular) Antibody, preincubated with Plexin-A1 (extracellular) Blocking Peptide (#BLP-PR081).

Immunohistochemistry

Image 2. Multiplex staining of GluN1 and Plexin-A1 in rat olfactory bulb - Immunohistochemical staining of immersion-fixed, free floating rat brain frozen sections using Guinea pig Anti-NMDAR1 (GluN1) (extracellular) Antibody (ABIN7043243, ABIN7045402 and ABIN7045403), (1:600) and rabbit Anti-Plexin-A1 (extracellular) Antibody (ABIN7043435, ABIN7045128 and ABIN7045129), (1:400). A. GluN1 (green) is expressed in the glomeruli (horizontal arrows). B. PLXNA1 staining (red) in the same section, shows expression in the glomeruli (arrow) but also in other layers (vertical arrow) of the olfactory bulb. C. Merge of the two images showcases co-localization in the glomeruli vs. lack of co-localization in deeper layers of the olfactory bulb. Cell nuclei are stained with DAPI (blue).

Flow Cytometry

Image 3. Cell surface detection of PLXNA1 by indirect flow cytometry in live intact human THP-1 monocytic leukemia cells: (black line) Cells.(red line) Cells + goat-anti-rabbit-FITC.(green line) Cells + Anti-Plexin-A1 (extracellular) Antibody (ABIN7043435, ABIN7045128 and ABIN7045129), (2.5 µg) + goat-anti-rabbit-FITC.