

Datasheet for ABIN7043436

anti-Plexin A1 antibody (Extracellular, N-Term) (FITC)[Go to Product page](#)

2 Images

Overview

Quantity:	50 µL
Target:	Plexin A1 (PLXNA1)
Binding Specificity:	AA 623-636, Extracellular, N-Term
Reactivity:	Human, Mouse, Rat
Host:	Rabbit
Clonality:	Polyclonal
Conjugate:	This Plexin A1 antibody is conjugated to FITC
Application:	Flow Cytometry (FACS)

Product Details

Immunogen:	Immunogen: Synthetic peptide Immunogen Sequence: (C)REVAPITRGQGDQR, corresponding to amino acid residues 623-636 of human PLXNA1
Isotype:	IgG
Characteristics:	Anti-Plexin-A1 (extracellular) Antibody (ABIN7043435, ABIN7045128 and ABIN7045129)) is a highly specific antibody directed against an extracellular epitope of the human protein. The antibody can be used in western blot and immunohistochemistry applications. It has been designed to recognize PLXNA1 from mouse, rat, and human samples. \nAnti-Plexin-A1 (extracellular)-FITC Antibody (ABIN7043435, ABIN7045128 and ABIN7045129)-F is directly conjugated to fluorescein isothiocyanate (FITC). This labeled antibody can be used in immunofluorescent applications such as direct live cell flow cytometry.

Product Details

Purification: Affinity purified on immobilized antigen.

Target Details

Target: Plexin A1 (PLXNA1)

Alternative Name: Plexin-A1 ([PLXNA1 Products](#))

Background: Alternative names: Plexin-A1, PLXNA1, PLXN1, Semaphorin receptor NOV

Gene ID: 5361

NCBI Accession: [NM_032242](#)

UniProt: [Q9UIW2](#)

Pathways: [Smooth Muscle Cell Migration](#)

Application Details

Application Notes: Optimal working dilution should be determined by the investigator.

Restrictions: For Research Use only

Handling

Format: Lyophilized

Reconstitution: 50 µL double distilled water (DDW).

Concentration: 1 mg/mL

Buffer: Reconstituted antibody contains phosphate buffered saline (PBS), pH 7.4, 1 % BSA, 0.05 % Sodium azide.

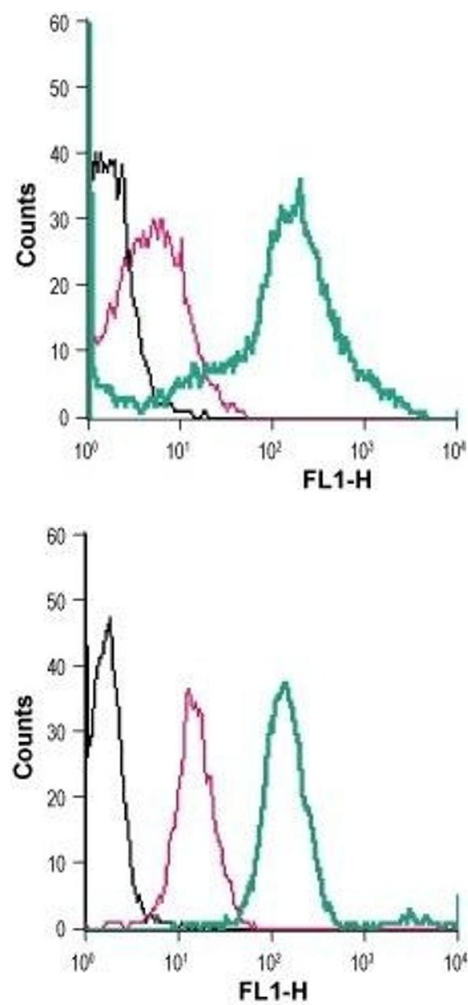
Preservative: Sodium azide

Precaution of Use: This product contains Sodium azide: a POISONOUS AND HAZARDOUS SUBSTANCE which should be handled by trained staff only.

Storage: RT, 4 °C, -20 °C

Storage Comment: Storage before reconstitution: The antibody ships as a lyophilized powder at room temperature. Upon arrival, it should be stored at -20°C.
Storage after reconstitution: The reconstituted solution can be stored at 4°C, protected from the light, for up to 1 week. For longer periods, small aliquots should be stored at -20°C. Avoid multiple freezing and thawing. Centrifuge all antibody preparations before use (10000 x g 5

min).



Flow Cytometry

Image 1. Cell surface detection of PLXNA1 in live intact mouse J774 macrophage cells: (black line) Cells.(red line) Cells + Rabbit IgG isotype control-FITC.(green line) Cells + Anti-Plexin-A1 (extracellular)-FITC Antibody ((ABIN7043436, ABIN7045688, ABIN7045689 and ABIN7045690), (5 µg antibody/0.5x 10⁶ cells).

Flow Cytometry

Image 2. Cell surface detection of PLXNA1 in live intact human THP-1 monocytic leukemia cells: (black line) Cells.(red line) Cells + Rabbit IgG isotype control-FITC. (green line) Cells + Anti-Plexin-A1 (extracellular)-FITC Antibody ((ABIN7043436, ABIN7045688, ABIN7045689 and ABIN7045690), (2.5 µg antibody/0.5x 10⁶ cells).