

Datasheet for ABIN7043439

anti-Plexin C1 antibody (Extracellular, N-Term)

4 Images

[Go to Product page](#)

Overview

Quantity:	0.2 mL
Target:	Plexin C1 (PLXNC1)
Binding Specificity:	AA 860-874, Extracellular, N-Term
Reactivity:	Human, Mouse, Rat
Host:	Rabbit
Clonality:	Polyclonal
Conjugate:	This Plexin C1 antibody is un-conjugated
Application:	Western Blotting (WB), Immunohistochemistry (IHC), Flow Cytometry (FACS), Live Cell Imaging (LCI)

Product Details

Immunogen:	Immunogen: Synthetic peptide Immunogen Sequence: Peptide (C)EVKIQKENDNFNISK, corresponding to amino acid residues 860 - 874 of human Plexin-C1
Isotype:	IgG
Characteristics:	A rabbit polyclonal antibody to Plexin-C1 (extracellular)

Target Details

Target:	Plexin C1 (PLXNC1)
Alternative Name:	Plexin-C1 (PLXNC1 Products)
Background:	Alternative names: Virus-Encoded Semaphorin Protein Receptor, VESPR, CD232, PLXNC1

Target Details

NCBI Accession: [NM_005761](#)

UniProt: [O60486](#)

Application Details

Application Notes: Optimal working dilution should be determined by the investigator.

Restrictions: For Research Use only

Handling

Format: Lyophilized

Reconstitution: 25 µL, 50 µL or 0.2 mL double distilled water (DDW), depending on the sample size.

Concentration: 0.8 mg/mL

Buffer: Reconstituted antibody contains phosphate buffered saline (PBS), pH 7.4, 1 % BSA, 0.05 % Sodium azide.

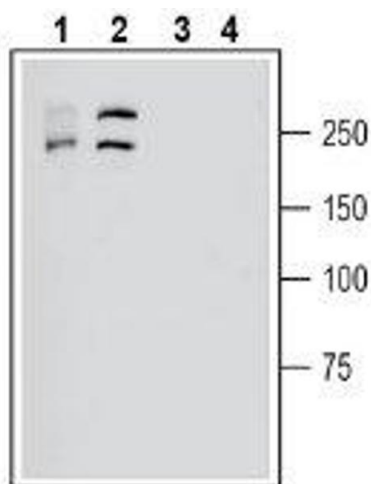
Preservative: Sodium azide

Precaution of Use: This product contains Sodium azide: a POISONOUS AND HAZARDOUS SUBSTANCE which should be handled by trained staff only.

Storage: RT, 4 °C, -20 °C

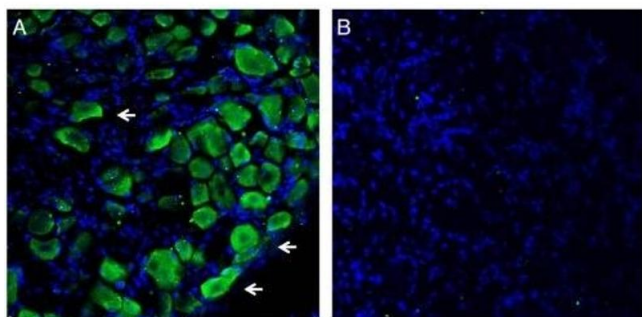
Storage Comment: Storage before reconstitution: The antibody ships as a lyophilized powder at room temperature. Upon arrival, it should be stored at -20°C.

Storage after reconstitution: The reconstituted solution can be stored at 4°C for up to 1 week. For longer periods, small aliquots should be stored at -20°C. Avoid multiple freezing and thawing. Centrifuge all antibody preparations before use (10000 x g 5 min).



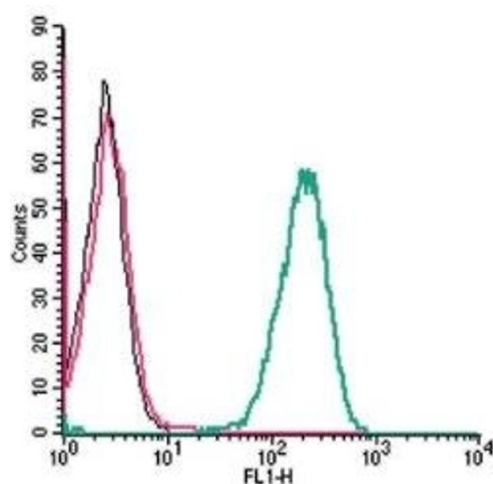
Western Blotting

Image 1. Western blot analysis of human HL-60 acute promyelocytic leukemia cell line lysates (lanes 1 and 3) and human Malme-3M melanoma cell line lysate (lanes 2 and 4): - 1-2. Anti-Plexin-C1 (extracellular) Antibody (ABIN7043439, ABIN7045132 and ABIN7045133), (1:200). 3-4. Anti-Plexin-C1 (extracellular) Antibody, preincubated with Plexin-C1 (extracellular) Blocking Peptide (BLP-PR091).



Immunohistochemistry

Image 2. Expression of Plexin-C1 in in rat dorsal root ganglion. - Immunohistochemical staining of perfusion-fixed frozen rat dorsal root ganglion (DRG) sections with Anti-Plexin-C1 (extracellular) Antibody (ABIN7043439, ABIN7045132 and ABIN7045133), (1: 200), followed by goat anti-rabbit-AlexaFluor-488. A. Plexin-C1 immunoreactivity (green) appears in DRG neuron profiles (arrows). B. Pre-incubation of the antibody with Plexin-C1 (extracellular) Blocking Peptide (BLP-PR091), suppressed staining. Cell nuclei are stained with DAPI (blue).



Flow Cytometry

Image 3. Cell surface detection of Plexin-C1 by indirect flow cytometry in live intact human THP-1 monocytic leukemia cells: (black line) Cells.(red line) Cells + goat-anti-rabbit-FITC.(green line) Cells + Anti-Plexin-C1 (extracellular) Antibody (ABIN7043439, ABIN7045132 and ABIN7045133), (2.5 µg) + goat-anti-rabbit-FITC.

Please check the [product details page](#) for more images. Overall 4 images are available for ABIN7043439.