

Datasheet for ABIN7043450

**anti-KCNK16 antibody (1st Extracellular Loop)****2** Images[Go to Product page](#)

## Overview

Quantity:	50 µL
Target:	KCNK16
Binding Specificity:	1st Extracellular Loop, AA 75-88
Reactivity:	Human, Mouse, Rat
Host:	Rabbit
Clonality:	Polyclonal
Conjugate:	This KCNK16 antibody is un-conjugated
Application:	Western Blotting (WB)

## Product Details

Immunogen:	Immunogen: Synthetic peptide Immunogen Sequence: (C)EAWVKGVNPKGNST, corresponding to amino acid residues 75-88 of human KCNK16
Isotype:	IgG
Characteristics:	Anti-KCNK16 (TALK-1) (extracellular) Antibody (ABIN7043450, ABIN7045072 and ABIN7045073)) is a highly specific antibody directed against an epitope of the human protein. The antibody can be used in western blot, analysis. The antibody recognizes an extracellular epitope, and can potentially be used for detecting the protein in living cells. It has been designed to recognize TALK-1 from rat, mouse, and human samples.
Purification:	Affinity purified on immobilized antigen.

## Target Details

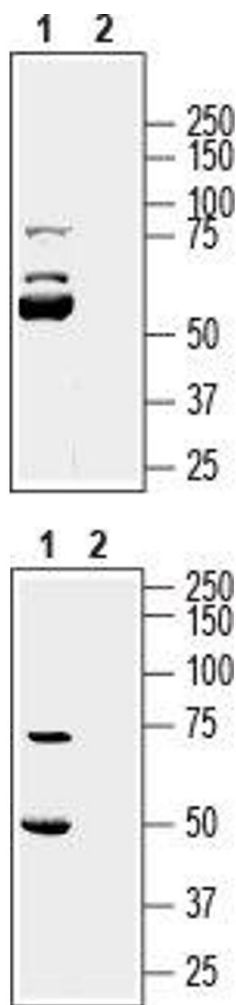
Target:	KCNK16
Alternative Name:	KCNK16 (TALK-1) ( <a href="#">KCNK16 Products</a> )
Background:	Alternative names: KCNK16 (TALK-1), Potassium two pore domain channel subfamily K member 16, TWIK-related alkaline pH -activated K <sup>+</sup> channel 1, K2P16.1
Gene ID:	83795
NCBI Accession:	<a href="#">NM_032115</a>
UniProt:	<a href="#">Q96T55</a>

## Application Details

Application Notes:	Optimal working dilution should be determined by the investigator.
Restrictions:	For Research Use only

## Handling

Format:	Lyophilized
Reconstitution:	25 µL, 50 µL or 0.2 mL double distilled water (DDW), depending on the sample size.
Concentration:	0.8 mg/mL
Buffer:	Reconstituted antibody contains phosphate buffered saline (PBS), pH 7.4, 1 % BSA, 0.05 % Sodium azide.
Preservative:	Sodium azide
Precaution of Use:	This product contains Sodium azide: a POISONOUS AND HAZARDOUS SUBSTANCE which should be handled by trained staff only.
Storage:	RT, 4 °C, -20 °C
Storage Comment:	<p>Storage before reconstitution: The antibody ships as a lyophilized powder at room temperature. Upon arrival, it should be stored at -20°C.</p> <p>Storage after reconstitution: The reconstituted solution can be stored at 4°C for up to 1 week. For longer periods, small aliquots should be stored at -20°C. Avoid multiple freezing and thawing. Centrifuge all antibody preparations before use (10000 x g 5 min).</p>



#### Western Blotting

**Image 1.** Western blot analysis of human PANC-1 pancreas ductal adenocarcinoma cell line lysate: - 1. Anti-KCNK16 (TALK-1) (extracellular) Antibody (ABIN7043450, ABIN7045072 and ABIN7045073), (1:600). 2. Anti-KCNK16 (TALK-1) (extracellular) Antibody, preincubated with KCNK16/TALK-1 (extracellular) Blocking Peptide (#BLP-PC170).

#### Western Blotting

**Image 2.** Western blot analysis of rat pancreas lysate: - 1. Anti-KCNK16 (TALK-1) (extracellular) Antibody (ABIN7043450, ABIN7045072 and ABIN7045073), (1:600). 2. Anti-KCNK16 (TALK-1) (extracellular) Antibody, preincubated with KCNK16/TALK-1 (extracellular) Blocking Peptide (#BLP-PC170).