

Datasheet for ABIN7043461
anti-KCNN2 antibody (C-Term, Intracellular)[Go to Product page](#)

2 Images

Overview

| | |
|----------------------|---|
| Quantity: | 25 µL |
| Target: | KCNN2 |
| Binding Specificity: | AA 542-559, C-Term, Intracellular |
| Reactivity: | Human, Mouse, Rat |
| Host: | Rabbit |
| Clonality: | Polyclonal |
| Conjugate: | This KCNN2 antibody is un-conjugated |
| Application: | Western Blotting (WB), Immunohistochemistry (IHC), Immunocytochemistry (ICC), Immunofluorescence (IF), Immunoprecipitation (IP) |

Product Details

| | |
|------------------|--|
| Immunogen: | Immunogen: Synthetic peptide Immunogen Sequence: (C)ETQMENYDKHVTYNAERS, corresponding to amino acid residues 542-559 of rat KCNN2 |
| Isotype: | IgG |
| Characteristics: | Anti-KCNN2 (KCa2.2, SK2) Antibody (ABIN7043461, ABIN7044938 and ABIN7044939)) is a highly specific antibody directed against an epitope of the rat protein. The antibody can be used in western blot, immunocytochemistry, immunohistochemistry, and immunoprecipitation applications. It has been designed to recognize KCNN2 from human, rat, and mouse samples. |
| Purification: | Affinity purified on immobilized antigen. |

Target Details

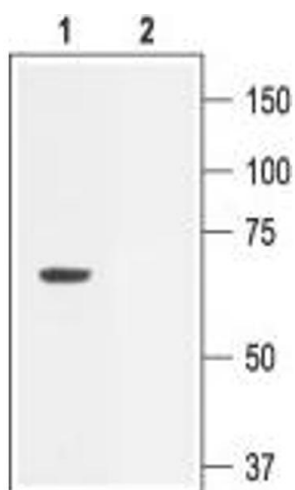
| | |
|-------------------|---|
| Target: | KCNN2 |
| Alternative Name: | KCNN2 (KCa2.2, SK2) (KCNN2 Products) |
| Background: | Alternative names: KCNN2 (KCa2.2, SK2), SKCa2, Small conductance calcium-activated potassium channel protein 2, Apamin-sensitive small conductance Ca ²⁺ -dependent K ⁺ channel |
| Gene ID: | 54262 |
| NCBI Accession: | NM_021614 |
| UniProt: | P70604 |

Application Details

| | |
|--------------------|--|
| Application Notes: | Optimal working dilution should be determined by the investigator. |
| Restrictions: | For Research Use only |

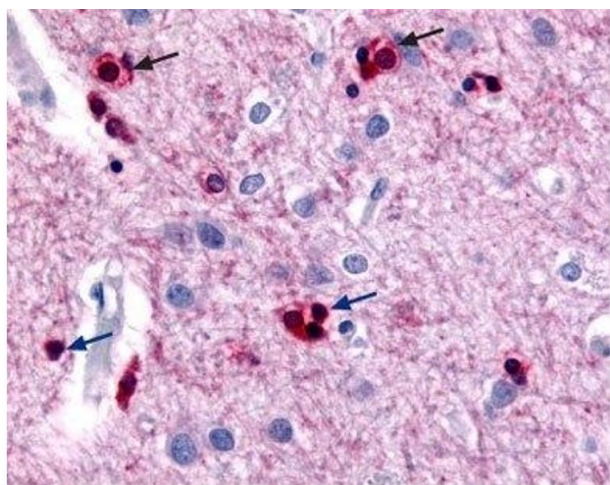
Handling

| | |
|--------------------|--|
| Format: | Lyophilized |
| Reconstitution: | 25 µL, 50 µL or 0.2 mL double distilled water (DDW), depending on the sample size. |
| Concentration: | 0.8 mg/mL |
| Buffer: | Reconstituted antibody contains phosphate buffered saline (PBS), pH 7.4, 1 % BSA, 0.05 % Sodium azide. |
| Preservative: | Sodium azide |
| Precaution of Use: | This product contains Sodium azide: a POISONOUS AND HAZARDOUS SUBSTANCE which should be handled by trained staff only. |
| Storage: | RT, 4 °C, -20 °C |
| Storage Comment: | <p>Storage before reconstitution: The antibody ships as a lyophilized powder at room temperature. Upon arrival, it should be stored at -20°C.</p> <p>Storage after reconstitution: The reconstituted solution can be stored at 4°C for up to 1 week. For longer periods, small aliquots should be stored at -20°C. Avoid multiple freezing and thawing. Centrifuge all antibody preparations before use (10000 x g 5 min).</p> |



Western Blotting

Image 1. Western blot analysis of rat brain membranes: - 1. Anti-KCNN2 (KCa2.2, SK2) Antibody # (ABIN7043461, ABIN7044938 and ABIN7044939), (1:200). 2. Anti-KCNN2 (KCa2.2, SK2) Antibody, preincubated with KCNN2/KCa2.2 Blocking Peptide (#BLP-PC028).



Immunohistochemistry

Image 2. Expression of KCNN2 (SK2) in rat cerebral cortex - Immunohistochemical staining of KCNN2 channels using Anti-KCNN2 (KCa2.2, SK2) Antibody (ABIN7043461, ABIN7044938 and ABIN7044939) in rat cerebral cortex. Picture showing the the third layer. Note that both neural (black arrows) and glial cells (green arrows) show intense staining. Reaction product is red and counterstain is H&E.