

Datasheet for ABIN7043478
anti-KIR5.1 antibody (C-Term, Intracellular)

3 Images

[Go to Product page](#)

Overview

Quantity:	25 µL
Target:	KIR5.1 (KCNJ16)
Binding Specificity:	AA 311-325, C-Term, Intracellular
Reactivity:	Human, Rat, Mouse
Host:	Rabbit
Clonality:	Polyclonal
Conjugate:	This KIR5.1 antibody is un-conjugated
Application:	Western Blotting (WB), Immunohistochemistry (IHC), Immunofluorescence (IF)

Product Details

Immunogen:	Immunogen: Synthetic peptide
	Immunogen Sequence: HDVLEVKRKYKVNVC, corresponding to amino acid residues 311-325 of rat KCNJ16
Isotype:	IgG
Characteristics:	Anti-Kir5.1 Antibody (ABIN7043478, ABIN7045023 and ABIN7045024)) is a highly specific antibody directed against an epitope of the rat protein. The antibody can be used in western blot and immunohistochemistry applications. It has been designed to recognize Kir5.1 from rat, mouse, and human samples.
Purification:	Affinity purified on immobilized antigen.

Target Details

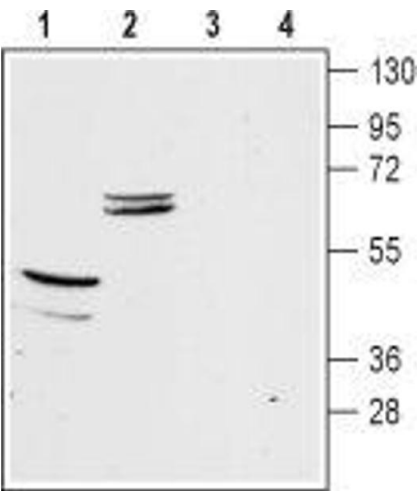
Target:	KIR5.1 (KCNJ16)
Alternative Name:	Kir5.1 (KCNJ16 Products)
Background:	Alternative names: Kir5.1, Inward rectifier potassium channel 16, KCNJ16, BIR9
Gene ID:	29719
NCBI Accession:	NM_018658
UniProt:	P52191

Application Details

Application Notes:	Optimal working dilution should be determined by the investigator.
Restrictions:	For Research Use only

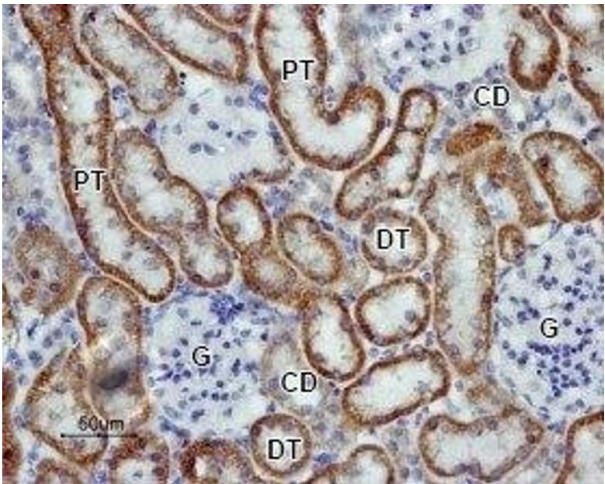
Handling

Format:	Lyophilized
Reconstitution:	25 µL, 50 µL or 0.2 mL double distilled water (DDW), depending on the sample size.
Concentration:	0.8 mg/mL
Buffer:	Reconstituted antibody contains phosphate buffered saline (PBS), pH 7.4, 1 % BSA, 0.05 % Sodium azide.
Preservative:	Sodium azide
Precaution of Use:	This product contains Sodium azide: a POISONOUS AND HAZARDOUS SUBSTANCE which should be handled by trained staff only.
Storage:	RT, 4 °C, -20 °C
Storage Comment:	<p>Storage before reconstitution: The antibody ships as a lyophilized powder at room temperature. Upon arrival, it should be stored at -20°C.</p> <p>Storage after reconstitution: The reconstituted solution can be stored at 4°C for up to 1 week. For longer periods, small aliquots should be stored at -20°C. Avoid multiple freezing and thawing. Centrifuge all antibody preparations before use (10000 x g 5 min).</p>



Western Blotting

Image 1. Western blot analysis of mouse brain (lanes 1 and 3) and kidney (lanes 2 and 4) membranes: - 1,2. Anti-Kir5.1 Antibody (ABIN7043478, ABIN7045023 and ABIN7045024), (1:200).3,4. Anti-Kir5.1 Antibody, preincubated with Kir5.1 Blocking Peptide (#BLP-PC123).



Immunohistochemistry

Image 2. Expression of Kir5.1 in rat kidney - Immunohistochemical staining of paraffin embedded section of rat kidney using Anti-Kir5.1 Antibody (ABIN7043478, ABIN7045023 and ABIN7045024) (1:100). Kir5.1 (brown staining) is expressed in both proximal tubules (PT) and distal tubules (DT) in the renal cortex. Note that collecting ducts (CD) are less stained while glomeruli (G) are negative. Hematoxylin is used as the counterstain.



Western Blotting

Image 3. Western blot analysis of rat kidney (lanes 1 and 3) and liver (lanes 2 and 4) membranes: - 1,2. Anti-Kir5.1 Antibody (ABIN7043478, ABIN7045023 and ABIN7045024), (1:200).3,4. Anti-Kir5.1 Antibody, preincubated with Kir5.1 Blocking Peptide (#BLP-PC123).