

Datasheet for ABIN7043489

anti-KCNJ8 antibody (C-Term, Intracellular)**3** Images[Go to Product page](#)

Overview

Quantity:	25 µL
Target:	KCNJ8
Binding Specificity:	AA 382-396, C-Term, Intracellular
Reactivity:	Human, Rat, Mouse
Host:	Rabbit
Clonality:	Polyclonal
Conjugate:	This KCNJ8 antibody is un-conjugated
Application:	Western Blotting (WB), Immunohistochemistry (IHC), Immunofluorescence (IF), Immunoprecipitation (IP)

Product Details

Immunogen:	Immunogen: Synthetic peptide Immunogen Sequence: (C)KRNSMRRNNSMRRSN, corresponding to amino acid residues 382-396 of rat Kir6.1
Isotype:	IgG
Cross-Reactivity (Details):	The antibody is specific for Kir6.1 and does not cross react with Kir6.2.
Characteristics:	Anti-Kir6.1 (KCNJ8) Antibody is directed against an epitope of rat Kir6.1. Anti-Kir6.1 (KCNJ8) Antibody (ABIN7043489, ABIN7045000 and ABIN7045001)) can be used in western blot, immunoprecipitation and immunohistochemistry applications. It has been designed to recognize Kir6.1 from human, rat and mouse samples. The antibody is specific for Kir6.1 and does not cross react with Kir6.2.

Product Details

Purification: Affinity purified on immobilized antigen.

Target Details

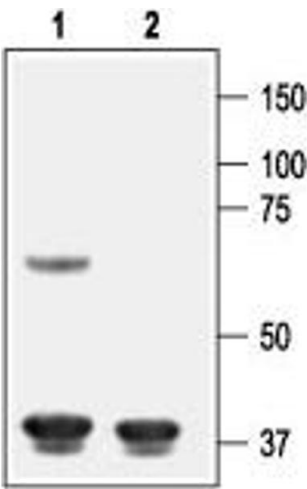
Target:	KCNJ8
Alternative Name:	Kir6.1 (KCNJ8) (KCNJ8 Products)
Background:	Alternative names: Kir6.1 (KCNJ8), ATP-sensitive inward rectifier potassium channel 8, uKATP-1
Gene ID:	25472
NCBI Accession:	NM_004982
UniProt:	Q63664

Application Details

Application Notes:	Optimal working dilution should be determined by the investigator.
Restrictions:	For Research Use only

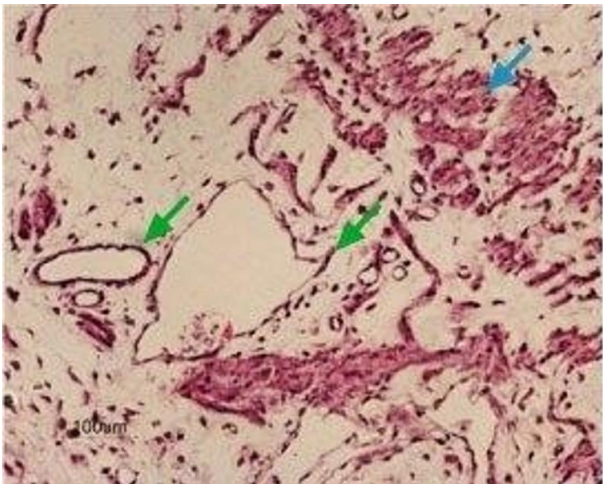
Handling

Format:	Lyophilized
Reconstitution:	25 µL, 50 µL or 0.2 mL double distilled water (DDW), depending on the sample size.
Concentration:	0.8 mg/mL
Buffer:	Reconstituted antibody contains phosphate buffered saline (PBS), pH 7.4, 1 % BSA, 0.05 % Sodium azide.
Preservative:	Sodium azide
Precaution of Use:	This product contains Sodium azide: a POISONOUS AND HAZARDOUS SUBSTANCE which should be handled by trained staff only.
Storage:	RT, 4 °C, -20 °C
Storage Comment:	<p>Storage before reconstitution: The antibody ships as a lyophilized powder at room temperature. Upon arrival, it should be stored at -20°C.</p> <p>Storage after reconstitution: The reconstituted solution can be stored at 4°C for up to 1 week. For longer periods, small aliquots should be stored at -20°C. Avoid multiple freezing and thawing. Centrifuge all antibody preparations before use (10000 x g 5 min).</p>



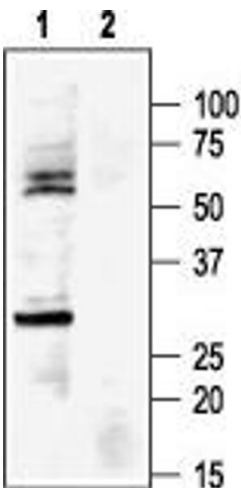
Western Blotting

Image 1. Western blot analysis of rat cortex lysate: - 1. Anti-Kir6.1 (KCNJ8) Antibody (ABIN7043489, ABIN7045000 and ABIN7045001), (1:200).2. Anti-Kir6.1 (KCNJ8) Antibody, preincubated with Kir6.1/KCNJ8 Blocking Peptide (#BLP-PC105).



Immunohistochemistry

Image 2. Expression of Kir6.1 in rat uterus - Immunohistochemical stain of pregnant rat longitudinal section of the myometrium using Anti-Kir6.1 (KCNJ8) Antibody (ABIN7043489, ABIN7045000 and ABIN7045001), (1:50). Strong and specific staining is evident in smooth muscles cells both in the myometrium (blue arrow) and muscular layers of blood vessels (green arrow). Peroxidase reaction with DAB were used for the color reaction. Hematoxilin is used as the counterstain.



Western Blotting

Image 3. Western blot analysis of rat heart membranes: - 1. Anti-Kir6.1 (KCNJ8) Antibody (ABIN7043489, ABIN7045000 and ABIN7045001), (1:200).2. Anti-Kir6.1 (KCNJ8) Antibody, preincubated with Kir6.1/KCNJ8 Blocking Peptide (#BLP-PC105).