

Datasheet for ABIN7043492

anti-KCNMA1 antibody (C-Term, Intracellular)

3 Images

[Go to Product page](#)

Overview

Quantity:	25 µL
Target:	KCNMA1
Binding Specificity:	AA 1097-1196, C-Term, Intracellular
Reactivity:	Human, Rat, Mouse
Host:	Guinea Pig
Clonality:	Polyclonal
Conjugate:	This KCNMA1 antibody is un-conjugated
Application:	Western Blotting (WB)

Product Details

Immunogen:	Immunogen: GST fusion protein Immunogen Sequence: GST fusion protein with the sequence SHSSHSSQSSSKSSSVHSIPSTANRPNRPKSRESRDQKQATRMTRMGQAEKKWFTDEPDNAYPRNIQIKPMSTHMANQINQY corresponding to residues 1097-1196 of mouse KCNMA1 variant 2
Isotype:	IgG
Characteristics:	Guinea pig Anti-KCNMA1 (KCa1.1) (1097-1196) Antibody is directed against an epitope of the mouse KCNMA1 channel. KCNMA1 (KCa1.1) (1097-1196) Antibody (#), raised in guinea pigs, can be used in western blot, immunoprecipitation, immunocytochemistry and immunocytochemistry applications. It has been designed to recognize KCNMA1 from human, mouse and rat samples. The immunogen used to immunize guinea pigs is the same as Anti-KCNMA1 (KCa1.1) (1097-1196) Antibody (ABIN7043493, ABIN7044924 and ABIN7044925) raised in rabbit. Our line of guinea pig antibodies enables more flexibility with our products such as multiplex staining and immunoprecipitation, etc.

Product Details

Purification: The serum was depleted of anti-GST antibodies by affinity chromatography on immobilized GST and then the IgG fraction was depleted of immobilized antigen.

Target Details

Target:	KCNMA1
Alternative Name:	KCNMA1 (KCa1.1) (KCNMA1 Products)
Background:	Alternative names: KCNMA1 (KCa1.1), Large conductance calcium-activated potassium channel subfamily M subunit alpha-1, BKCa alpha, Maxi K+, Slo1
Gene ID:	16531
NCBI Accession:	NM_002247
UniProt:	Q08460
Pathways:	Regulation of Hormone Metabolic Process , Sensory Perception of Sound

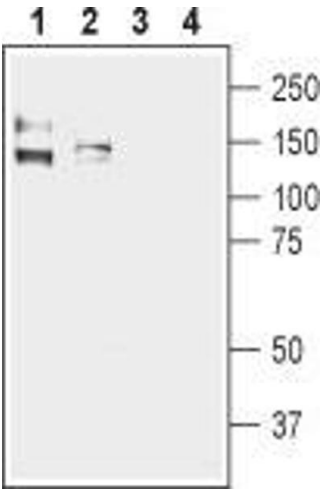
Application Details

Application Notes:	Optimal working dilution should be determined by the investigator.
Restrictions:	For Research Use only

Handling

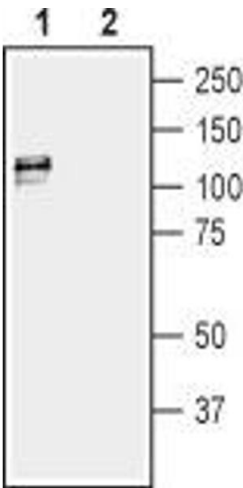
Format:	Lyophilized
Reconstitution:	25 µL, 50 µL or 0.2 mL double distilled water (DDW), depending on the sample size.
Concentration:	0.8 mg/mL
Buffer:	Reconstituted antibody contains phosphate buffered saline (PBS), pH 7.4, 1 % BSA, 0.05 % Sodium azide.
Preservative:	Sodium azide
Precaution of Use:	This product contains Sodium azide: a POISONOUS AND HAZARDOUS SUBSTANCE which should be handled by trained staff only.
Storage:	RT, 4 °C, -20 °C
Storage Comment:	Storage before reconstitution: The antibody ships as a lyophilized powder at room temperature. Upon arrival, it should be stored at -20°C. Storage after reconstitution: The reconstituted solution can be stored at 4°C for up to 1 week.

For longer periods, small aliquots should be stored at -20°C. Avoid multiple freezing and thawing. Centrifuge all antibody preparations before use (10000 x g 5 min).



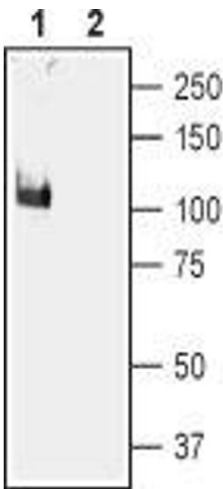
Western Blotting

Image 1. Western blot analysis of human Colo205 colon adenocarcinoma (lanes 1 and 3) and human Caco-2 colon adenocarcinoma cell lysates (lanes 2 and 4): - 1,2. Guinea pig Anti-KCNMA1 (KCa1.1) (1097-1096) Antibody (ABIN7043492, ABIN7045375 and ABIN7045376), (1:200).3,4. Guinea pig Anti-KCNMA1 (KCa1.1) (1097-1096) Antibody, preincubated with KCNMA1/KCa1.1 (1097-1196) Blocking Peptide (#BLP-PC021).



Western Blotting

Image 2. Western blot analysis of rat bladder lysate: - 1. Guinea pig Anti-KCNMA1 (KCa1.1) (1097-1096) Antibody (ABIN7043492, ABIN7045375 and ABIN7045376), (1:200).2. Guinea pig Anti-KCNMA1 (KCa1.1) (1097-1096) Antibody, preincubated with KCNMA1/KCa1.1 (1097-1196) Blocking Peptide (#BLP-PC021).



Western Blotting

Image 3. Western blot analysis of mouse brain membranes: - 1. Guinea pig Anti-KCNMA1 (KCa1.1) (1097-1096) Antibody (ABIN7043492, ABIN7045375 and ABIN7045376), (1:200).2. Guinea pig Anti-KCNMA1 (KCa1.1) (1097-1096) Antibody, preincubated with KCNMA1/KCa1.1 (1097-1196) Blocking Peptide (#BLP-PC021).