

Datasheet for ABIN7043496
anti-KCNS1 antibody (1st Extracellular Loop)



[Go to Product page](#)

1 Image

Overview

Quantity:	50 µL
Target:	KCNS1
Binding Specificity:	1st Extracellular Loop, AA 233-245
Reactivity:	Human, Mouse, Rat
Host:	Rabbit
Clonality:	Polyclonal
Conjugate:	This KCNS1 antibody is un-conjugated
Application:	Western Blotting (WB)

Product Details

Immunogen:	Immunogen: Synthetic peptide Immunogen Sequence: (C)EDVRDDPVLRRLLE, corresponding to amino acid residues 233-245 of rat KCNS1
Isotype:	IgG
Characteristics:	Anti-KCNS1 (Kv9.1) (extracellular) Antibody is directed against an extracellular epitope of the rat KV9.1 channel. Anti-KCNS1 (KV9.1) (extracellular) Antibody (ABIN7043496, ABIN7045032 and ABIN7045033) can be used for western blot analysis. It has been designed to recognize KV9.1 from human mouse and rat samples.
Purification:	Affinity purified on immobilized antigen.

Target Details

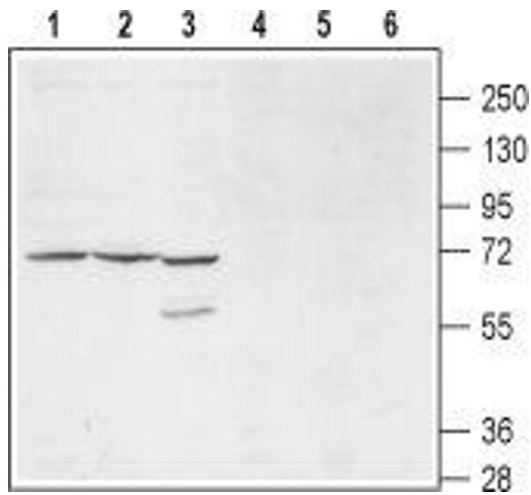
Target:	KCNS1
Alternative Name:	KCNS1 (KV9.1) (KCNS1 Products)
Background:	Alternative names: KCNS1 (KV9.1), Potassium voltage-gated channel subfamily S member 1
Gene ID:	117023
NCBI Accession:	NM_002251
UniProt:	O88758

Application Details

Application Notes:	Optimal working dilution should be determined by the investigator.
Restrictions:	For Research Use only

Handling

Format:	Lyophilized
Reconstitution:	50 µL or 0.2 mL double distilled water (DDW), depending on the sample size.
Concentration:	0.8 mg/mL
Buffer:	Reconstituted antibody contains phosphate buffered saline (PBS), pH 7.4, 1 % BSA, 0.05 % Sodium azide.
Preservative:	Sodium azide
Precaution of Use:	This product contains Sodium azide: a POISONOUS AND HAZARDOUS SUBSTANCE which should be handled by trained staff only.
Storage:	RT, 4 °C, -20 °C
Storage Comment:	Storage before reconstitution: The antibody ships as a lyophilized powder at room temperature. Upon arrival, it should be stored at -20°C. Storage after reconstitution: The reconstituted solution can be stored at 4°C for up to 1 week. For longer periods, small aliquots should be stored at -20°C. Avoid multiple freezing and thawing. Centrifuge all antibody preparations before use (10000 x g 5 min).



Western Blotting

Image 1. Western blot analysis of mouse (lanes 1 and 4), and rat (lanes 2 and 5) brain membranes and human HL-60 promyelocytic leukemia cell lysates (lanes 3 and 6): - 1-3. Anti-KCNS1 (KV9.1) (extracellular) Antibody (ABIN7043496, ABIN7045032 and ABIN7045033), (1:200).4-6. Anti-KCNS1 (KV9.1) (extracellular) Antibody, preincubated with KCNS1/Kv9.1 (extracellular) Blocking Peptide (#BLP-PC131).