



[Go to Product page](#)

Datasheet for ABIN7043508

anti-Kv2.1/KCNB1 antibody (C-Term, Intracellular)

2 Images

Overview

Quantity:	25 µL
Target:	Kv2.1/KCNB1 (KCNB1)
Binding Specificity:	AA 841-857, C-Term, Intracellular
Reactivity:	Mouse, Rat
Host:	Guinea Pig
Clonality:	Polyclonal
Conjugate:	This Kv2.1/KCNB1 antibody is un-conjugated
Application:	Western Blotting (WB), Immunohistochemistry (IHC), Immunofluorescence (IF)

Product Details

Immunogen:	Immunogen: Synthetic peptide Immunogen Sequence: (C)HMLPGGGAHGSTRDQSI, corresponding to amino acid residues 841-857 of rat KV2.1
Isotype:	IgG
Characteristics:	Guinea pig Anti-KV2.1 Antibody (#) is a highly specific antibody directed against an epitope of the rat protein. The antibody can be used in western blot and immunohistochemistry applications. It has been designed to recognize KV2.1 from mouse, rat, and human samples. The antigen used to immunize guinea pigs is the same as Anti-KV2.1 Antibody (ABIN7043509 and ABIN7044915)) raised in rabbit. Our line of guinea pig antibodies enables more flexibility with our products such as multiplex staining studies, immunoprecipitation, etc.
Purification:	Affinity purified on immobilized antigen.

Target Details

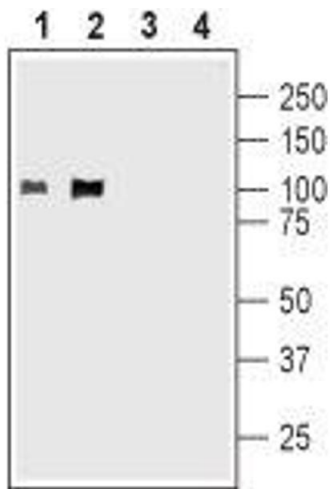
Target:	Kv2.1/KCNB1 (KCNB1)
Alternative Name:	KV2.1 (KCNB1 Products)
Background:	Alternative names: KV2.1, KCNB1, DRK1, Delayed rectifier potassium channel 1, Potassium voltage-gated channel subfamily B member 1
Gene ID:	25736
NCBI Accession:	NM_004975
UniProt:	P15387
Pathways:	Synaptic Membrane

Application Details

Application Notes:	Optimal working dilution should be determined by the investigator.
Restrictions:	For Research Use only

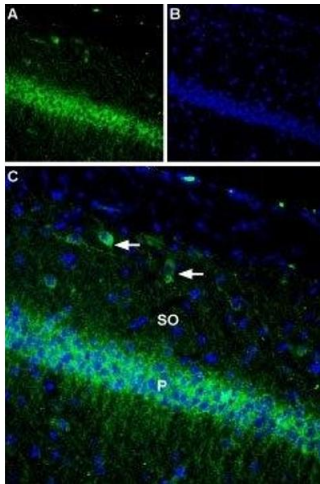
Handling

Format:	Lyophilized
Reconstitution:	25 µL, 50 µL or 0.2 mL double distilled water (DDW), depending on the sample size.
Concentration:	0.8 mg/mL
Buffer:	Reconstituted antibody contains phosphate buffered saline (PBS), pH 7.4, 1 % BSA, 0.05 % Sodium azide.
Preservative:	Sodium azide
Precaution of Use:	This product contains Sodium azide: a POISONOUS AND HAZARDOUS SUBSTANCE which should be handled by trained staff only.
Storage:	RT, 4 °C, -20 °C
Storage Comment:	Storage before reconstitution: The antibody ships as a lyophilized powder at room temperature. Upon arrival, it should be stored at -20°C. Storage after reconstitution: The reconstituted solution can be stored at 4°C for up to 1 week. For longer periods, small aliquots should be stored at -20°C. Avoid multiple freezing and thawing. Centrifuge all antibody preparations before use (10000 x g 5 min).



Western Blotting

Image 1. Western blot analysis of rat (lanes 1 and 3) and mouse (lanes 2 and 4) brain membranes: - 1,2. Guinea pig Anti-KV2.1 Antibody (ABIN7043508, ABIN7045430 and ABIN7045431), (1:500).3,4. Guinea pig Anti-KV2.1 Antibody, preincubated with Kv2.1 Blocking Peptide (#BLP-PC012).



Immunohistochemistry

Image 2. Expression of KV2.1 channel in rat hippocampus - Immunohistochemical staining of rat hippocampal CA1 region using Guinea pig Anti-KV2.1 Antibody (ABIN7043508, ABIN7045430 and ABIN7045431), (1:400). A. KV2.1 staining (green) appears in the pyramidal layer (P) and in stratum oriens (SO) interneurons (horizontal arrows). B. Nuclei staining using DAPI as the counterstain (blue). C. Merged image of panels A and B.