

Datasheet for ABIN7043509

anti-Kv2.1/KCNB1 antibody (C-Term, Intracellular)**2** Images[Go to Product page](#)

Overview

Quantity:	50 µL
Target:	Kv2.1/KCNB1 (KCNB1)
Binding Specificity:	AA 841-857, C-Term, Intracellular
Reactivity:	Human, Mouse, Rat
Host:	Rabbit
Clonality:	Polyclonal
Conjugate:	This Kv2.1/KCNB1 antibody is un-conjugated
Application:	Western Blotting (WB), Immunohistochemistry (IHC), Immunofluorescence (IF), Immunoprecipitation (IP), Immunocytochemistry (ICC)

Product Details

Immunogen:	Immunogen: Synthetic peptide Immunogen Sequence: (CY)HMLPGGGAHGSTRDQSI, corresponding to amino acid residues 841-857 of rat KV2.1
Isotype:	IgG
Characteristics:	Anti-Kv2.1 Antibody is directed against an epitope of the rat KV2.1 channel. Anti-KV2.1 Antibody (ABIN7043509 and ABIN7044915)) can be used in western blot, immunoprecipitation, immunocytochemistry, and immunohistochemistry applications. It has been designed to recognize KV2.1 from rat, human, and mouse samples.
Purification:	Affinity purified on immobilized antigen.

Target Details

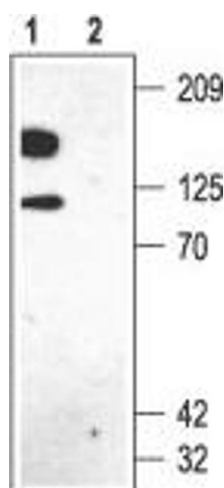
Target:	Kv2.1/KCNB1 (KCNB1)
Alternative Name:	KV2.1 (KCNB1 Products)
Background:	Alternative names: KV2.1, KCNB1, DRK1, Delayed rectifier potassium channel 1, Potassium voltage-gated channel subfamily B member 1
Gene ID:	25736
NCBI Accession:	NM_004975
UniProt:	P15387
Pathways:	Synaptic Membrane

Application Details

Application Notes:	Optimal working dilution should be determined by the investigator.
Restrictions:	For Research Use only

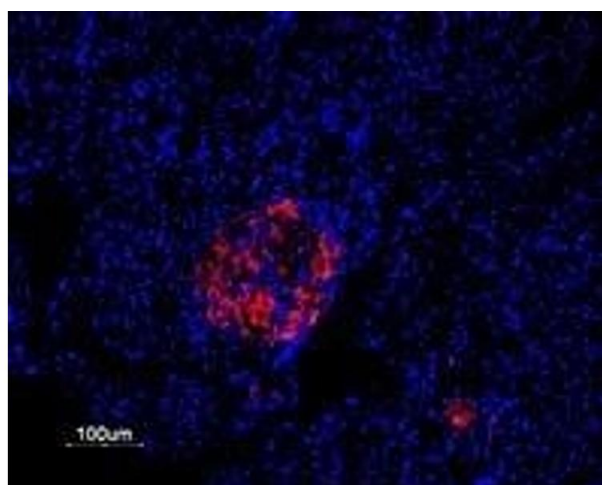
Handling

Format:	Lyophilized
Reconstitution:	50 µL or 0.2 mL double distilled water (DDW), depending on the sample size.
Concentration:	1 mg/mL
Buffer:	Reconstituted antibody contains phosphate buffered saline (PBS), pH 7.4, 1 % BSA, 0.05 % Sodium azide.
Preservative:	Sodium azide
Precaution of Use:	This product contains Sodium azide: a POISONOUS AND HAZARDOUS SUBSTANCE which should be handled by trained staff only.
Storage:	RT, 4 °C, -20 °C
Storage Comment:	<p>Storage before reconstitution: The antibody ships as a lyophilized powder at room temperature. Upon arrival, it should be stored at -20°C.</p> <p>Storage after reconstitution: The reconstituted solution can be stored at 4°C for up to 1 week. For longer periods, small aliquots should be stored at -20°C. Avoid multiple freezing and thawing. Centrifuge all antibody preparations before use (10000 x g 5 min).</p>



Western Blotting

Image 1. Western blot analysis of rat brain membranes: - 1. Anti-KV2.1 Antibody (ABIN7043509 and ABIN7044915), (1:500). 2. Anti-KV2.1 Antibody, preincubated with KV2.1 Blocking Peptide (BLP-PC012).



Immunohistochemistry

Image 2. Expression of KV2.1 channel in rat pancreas - Immunohistochemical staining of rat paraffin embedded pancreas sections using Anti-KV2.1 Antibody (ABIN7043509 and ABIN7044915), (1:50), followed by goat anti-rabbit-AlexaFluor-555 secondary antibody. Endocrine (Islets of Langerhans) and exocrine areas of pancreas section are shown. Strong and highly specific KV2.1 staining is evident only in endocrine cells (red). Hoechst 33342 is used as the counterstain (blue).