

Datasheet for ABIN7043510
anti-Kv2.2 antibody (C-Term, Intracellular)



[Go to Product page](#)

1 Image

Overview

| | |
|----------------------|--|
| Quantity: | 50 µL |
| Target: | Kv2.2 (KCNB2) |
| Binding Specificity: | AA 859-873, C-Term, Intracellular |
| Reactivity: | Rat, Human, Mouse |
| Host: | Rabbit |
| Clonality: | Polyclonal |
| Conjugate: | This Kv2.2 antibody is un-conjugated |
| Application: | Western Blotting (WB), Immunohistochemistry (IHC), Immunoprecipitation (IP), Immunocytochemistry (ICC), Immunofluorescence (IF) |

Product Details

| | |
|------------------|--|
| Immunogen: | Immunogen: Synthetic peptide Immunogen Sequence: CRQDIYQAVGEVKKD, corresponding to amino acid residues 859-873 of rat KV2.2 |
| Isotype: | IgG |
| Characteristics: | Anti-Kv2.2 (KCNB2) Antibody is directed against an intracellular epitope of the rat KV2.2 channel. Anti-KV2.2 (KCNB2) Antibody (ABIN7043510, ABIN7045017 and ABIN7045018)) can be used in western blot, immunoprecipitation, immunocytochemistry, and immunohistochemistry applications. It has been designed to recognize KV2.2 from rat, human, and mouse samples. |
| Purification: | Affinity purified on immobilized antigen. |

Target Details

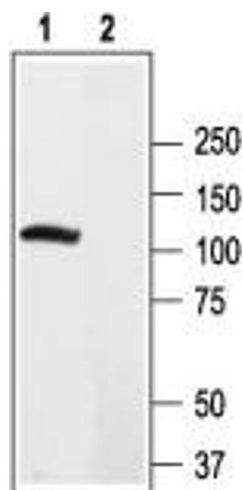
| | |
|-------------------|--|
| Target: | Kv2.2 (KCNB2) |
| Alternative Name: | KV2.2 (KCNB2) (KCNB2 Products) |
| Background: | Alternative names: KV2.2 (KCNB2), Voltage-gated potassium channel subfamily B member 2, CDRK |
| Gene ID: | 117105 |
| NCBI Accession: | NM_004770 |
| UniProt: | Q63099 |

Application Details

| | |
|--------------------|--|
| Application Notes: | Optimal working dilution should be determined by the investigator. |
| Restrictions: | For Research Use only |

Handling

| | |
|--------------------|--|
| Format: | Lyophilized |
| Reconstitution: | 25 µL, 50 µL or 0.2 mL double distilled water (DDW), depending on the sample size. |
| Concentration: | 0.8 mg/mL |
| Buffer: | Reconstituted antibody contains phosphate buffered saline (PBS), pH 7.4, 1 % BSA, 0.05 % Sodium azide. |
| Preservative: | Sodium azide |
| Precaution of Use: | This product contains Sodium azide: a POISONOUS AND HAZARDOUS SUBSTANCE which should be handled by trained staff only. |
| Storage: | RT, 4 °C, -20 °C |
| Storage Comment: | <p>Storage before reconstitution: The antibody ships as a lyophilized powder at room temperature. Upon arrival, it should be stored at -20°C.</p> <p>Storage after reconstitution: The reconstituted solution can be stored at 4°C for up to 1 week. For longer periods, small aliquots should be stored at -20°C. Avoid multiple freezing and thawing. Centrifuge all antibody preparations before use (10000 x g 5 min).</p> |



Western Blotting

Image 1. Western blot analysis of rat brain lysate: - 1. Anti-KV2.2 (KCNB2) Antibody (ABIN7043510, ABIN7045017 and ABIN7045018), (1:2000).2. Anti-KV2.2 (KCNB2) Antibody, preincubated with Kv2.2/KCNB2 Blocking Peptide (#BLP-PC120).