

Datasheet for ABIN7043511
anti-KCNAB1 antibody (N-Term)



[Go to Product page](#)

1 Image

Overview

Quantity:	50 µL
Target:	KCNAB1
Binding Specificity:	AA 54-67, N-Term
Reactivity:	Human, Rat, Mouse
Host:	Rabbit
Clonality:	Polyclonal
Conjugate:	This KCNAB1 antibody is un-conjugated
Application:	Western Blotting (WB)

Product Details

Immunogen:	Immunogen: Synthetic peptide Immunogen Sequence: (C)TPQHHISLKESTAK, corresponding to amino acid residues 54-67 of rat KCNAB1
Isotype:	IgG
Cross-Reactivity (Details):	This antibody will recognize the "canonical" splice isoform of human KVβ1 (also known as KVβ1.3). It will not recognize splice variants KVβ1.1 and KVβ1.2. For more information see human KVβ1 entry Q14722.
Characteristics:	Anti-Kvbeta1 Antibody is directed against an epitope of rat KVβ1. Anti-KVβ1 Antibody (ABIN7043511 and ABIN7045031)) can be used in western blot analysis. This antibody will recognize the splice isoform of human KVβ1 (also known as KVβ1.1). It won't recognize splice variants KVβ1.2 and KVβ1.3. For more information, see human KVβ1

Product Details

	entry Q14722 and Q14722-2. It has been designed to recognize KVβ1 from rat, mouse and human samples.
Purification:	Affinity purified on immobilized antigen.

Target Details

Target:	KCNAB1
Alternative Name:	KVbeta1 (KCNAB1 Products)
Background:	Alternative names: KVbeta1, Voltage-gated potassium channel subunit beta-1, KV beta 1, KVb1, KCNAB1
Gene ID:	29737
NCBI Accession:	NM_003471
UniProt:	P63144

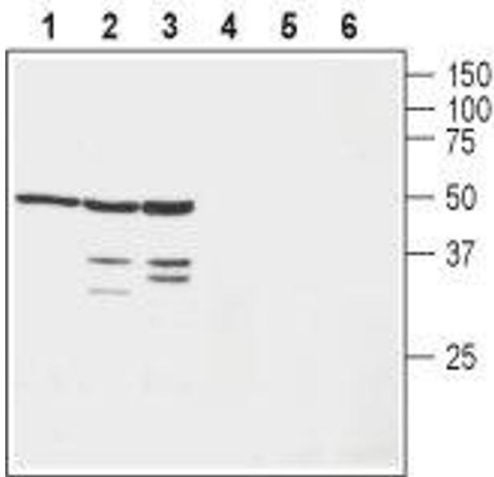
Application Details

Application Notes:	Optimal working dilution should be determined by the investigator.
Restrictions:	For Research Use only

Handling

Format:	Lyophilized
Reconstitution:	50 µL or 0.2 mL double distilled water (DDW), depending on the sample size.
Concentration:	0.8 mg/mL
Buffer:	Reconstituted antibody contains phosphate buffered saline (PBS), pH 7.4, 1 % BSA, 0.05 % Sodium azide.
Preservative:	Sodium azide
Precaution of Use:	This product contains Sodium azide: a POISONOUS AND HAZARDOUS SUBSTANCE which should be handled by trained staff only.
Storage:	RT,4 °C,-20 °C
Storage Comment:	Storage before reconstitution: The antibody ships as a lyophilized powder at room temperature. Upon arrival, it should be stored at -20°C. Storage after reconstitution: The reconstituted solution can be stored at 4°C for up to 1 week.

For longer periods, small aliquots should be stored at -20°C. Avoid multiple freezing and thawing. Centrifuge all antibody preparations before use (10000 x g 5 min).



Western Blotting

Image 1. Western blot analysis of human SH-SY5Y neuroblastoma cell lysate (lanes 1 and 4), mouse brain lysate (lanes 2 and 5) and rat brain lysate (lanes 3 and 6): - 1-3. Anti-KVβ1 Antibody (ABIN7043511 and ABIN7045031), (1:200).4-6. Anti-KVβ1 Antibody, preincubated with Kvβ1 Blocking Peptide (#BLP-PC127).