

Datasheet for ABIN7043524

anti-KCNA3 antibody (Extracellular Loop) (PE)[Go to Product page](#)**2** Images

Overview

Quantity:	50 µL
Target:	KCNA3
Binding Specificity:	AA 263-276, Extracellular Loop
Reactivity:	Human, Mouse, Rat
Host:	Rabbit
Clonality:	Polyclonal
Conjugate:	This KCNA3 antibody is conjugated to PE
Application:	Flow Cytometry (FACS)

Product Details

Immunogen:	Immunogen: Synthetic peptide Immunogen Sequence: KDYPASTSQDSFEA(C), corresponding to amino acid residues 263-276 of human KV1.3
Isotype:	IgG
Characteristics:	Anti-KV1.3 (KCNA3) (extracellular) Antibody (ABIN7043521, ABIN7044992 and ABIN7044993)) is a highly specific antibody directed against an extracellular epitope of the human protein. The antibody can be used in western blot, immunohistochemistry, live cell imaging and indirect flow cytometry applications. It has been designed to recognize KV1.3 potassium channel from human, mouse and rat samples. \nAnti-KV1.3 (KCNA3) (extracellular)-PE Antibody (ABIN7043524, ABIN7045648, ABIN7045649 and ABIN7045650)) is directly conjugated to Phycoerythrin (PE). This labeled antibody can be used in immunofluorescent applications such as direct flow cytometry and live cell imaging.

Product Details

Purification: Affinity purified on immobilized antigen.

Target Details

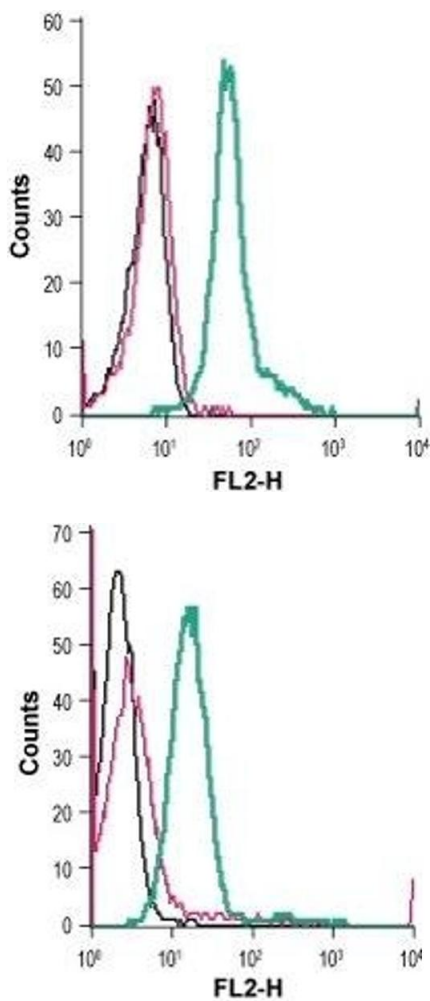
Target:	KCNA3
Alternative Name:	KV1.3 (KCNA3) (KCNA3 Products)
Background:	Alternative names: KV1.3 (KCNA3), Potassium voltage-gated channel subfamily A member 3
Gene ID:	3738
NCBI Accession:	NM_002232
UniProt:	P22001

Application Details

Application Notes:	Optimal working dilution should be determined by the investigator.
Restrictions:	For Research Use only

Handling

Format:	Lyophilized
Reconstitution:	50 µL double distilled water (DDW).
Concentration:	1 mg/mL
Buffer:	Reconstituted antibody contains phosphate buffered saline (PBS), pH 7.4, 1 % BSA, 0.05 % Sodium azide.
Preservative:	Sodium azide
Precaution of Use:	This product contains Sodium azide: a POISONOUS AND HAZARDOUS SUBSTANCE which should be handled by trained staff only.
Storage:	RT, 4 °C, -20 °C
Storage Comment:	<p>Storage before reconstitution: The antibody ships as a lyophilized powder at room temperature. Upon arrival, it should be stored at -20°C.</p> <p>Storage after reconstitution: The reconstituted solution can be stored at 4°C, protected from the light, for up to 1 week. For longer periods, small aliquots should be stored at -20°C. Avoid multiple freezing and thawing. Centrifuge all antibody preparations before use (10000 x g 5 min).</p>



Flow Cytometry

Image 1. Cell surface detection of KV1.3 in mouse TK-1 T-cell lymphoma cells: (black line) Cells.(red line) Cells + Rabbit IgG isotype control-PE. (green line) Cells + Anti-KV1.3 (KCNA3) (extracellular)-PE Antibody (ABIN7043524, ABIN7045648, ABIN7045649 and ABIN7045650), (5 µg).

Flow Cytometry

Image 2. Cell surface detection of KV1.3 in human Jurkat T-cell leukemia cells: (black line) Cells.(red line) Cells + Rabbit IgG isotype control-PE. (green line) Cells + Anti-KV1.3 (KCNA3) (extracellular)-PE Antibody (ABIN7043524, ABIN7045648, ABIN7045649 and ABIN7045650), (5 µg).