

Datasheet for ABIN7043544  
**anti-KCNH2 antibody (C-Term, Intracellular)**

## 3 Images

[Go to Product page](#)

## Overview

|                      |   |
|----------------------|---|
| Quantity:            | 25 µL   |
| Target:              | KCNH2   |
| Binding Specificity: | AA 1106-1159, C-Term, Intracellular   |
| Reactivity:          | Human, Rat, Mouse   |
| Host:                | Rabbit  |
| Clonality:           | Polyclonal  |
| Conjugate:           | This KCNH2 antibody is un-conjugated  |
| Application:         | Western Blotting (WB), Immunohistochemistry (IHC), Immunofluorescence (IF), Immunocytochemistry (ICC), Immunoprecipitation (IP) |

## Product Details

|                             |   |
|-----------------------------|---|
| Immunogen:                  | Immunogen: GST fusion protein<br>Immunogen Sequence: GST fusion protein with the sequence<br>DSLSQVSQFMACEELPPGAPELPQEGPTRRLSLPGQLGALTSQPLHRHGSDPGS, corresponding to<br>amino acid residues 1106-1159 of human KV11.1 (HERG)   |
| Isotype:                    | IgG   |
| Cross-Reactivity (Details): | The antibody recognizes the HERG1b splice variant but not splice variants HERG1-3 and HERG-4  |
| Characteristics:            | Anti-KCNH2 (HERG) Antibody is directed against an intracellular epitope of the human KV11.1 channel. Anti-KCNH2 (HERG) Antibody (ABIN7043544, ABIN7044976 and ABIN7044977) can be used in western blot, immunoprecipitation, immunohistochemical and immunocytochemical |

## Product Details

|               |  |
|---------------|--|
|               | applications. It has been designed to recognize KV11.1 from human, rat, and mouse samples.   |
| Purification: | The serum was depleted of anti-GST antibodies by affinity chromatography on immobilized GST and then the IgG fraction was purified on immobilized antigen. |

## Target Details

|                   |  |
|-------------------|--|
| Target:           | KCNH2  |
| Alternative Name: | KCNH2 (HERG) ( <a href="#">KCNH2 Products</a> )  |
| Background:       | Alternative names: KCNH2 (HERG), KV11.1, Potassium voltage-gated channel subfamily H member 2, Ether-a-go-go-related channel 1 |
| Gene ID:          | 3757   |
| NCBI Accession:   | <a href="#">NM_000238</a>  |
| UniProt:          | <a href="#">Q12809</a>   |

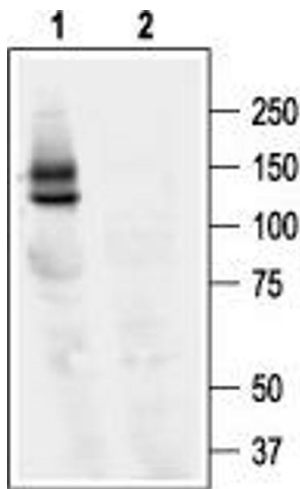
## Application Details

|                    |  |
|--------------------|--|
| Application Notes: | Optimal working dilution should be determined by the investigator. |
| Restrictions:      | For Research Use only  |

## Handling

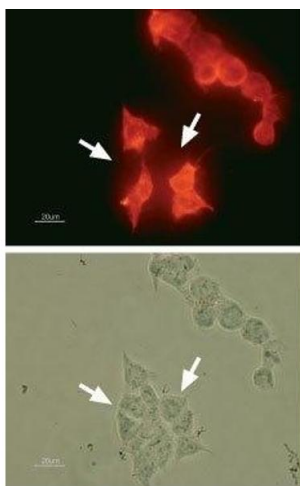
|                    |   |
|--------------------|---|
| Format:            | Lyophilized   |
| Reconstitution:    | 25 µL, 50 µL or 0.2 mL double distilled water (DDW), depending on the sample size.  |
| Concentration:     | 0.6 mg/mL   |
| Buffer:            | Reconstituted antibody contains phosphate buffered saline (PBS), pH 7.4, 1 % BSA, 0.05 % Sodium azide.  |
| Preservative:      | Sodium azide  |
| Precaution of Use: | This product contains Sodium azide: a POISONOUS AND HAZARDOUS SUBSTANCE which should be handled by trained staff only.  |
| Storage:           | RT, 4 °C, -20 °C  |
| Storage Comment:   | Storage before reconstitution: The antibody ships as a lyophilized powder at room temperature. Upon arrival, it should be stored at -20°C.<br><br>Storage after reconstitution: The reconstituted solution can be stored at 4°C for up to 1 week. |

For longer periods, small aliquots should be stored at -20°C. Avoid multiple freezing and thawing. Centrifuge all antibody preparations before use (10000 x g 5 min).



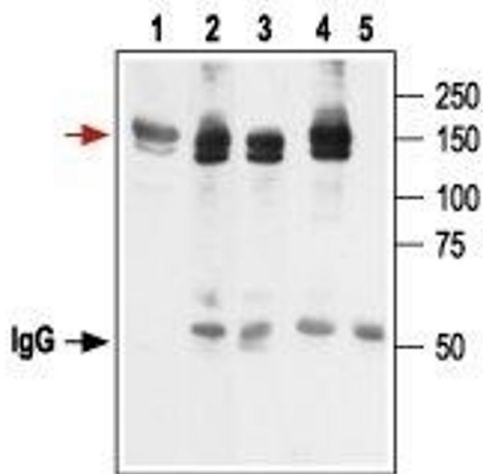
Western Blotting

**Image 1.** Western blot analysis of KV11.1 (HERG)-expressing HEK-293 cells: - 1. Anti-KCNH2 (HERG) Antibody (ABIN7043544, ABIN7044976 and ABIN7044977), (1:400).2. Anti-KCNH2 (HERG) Antibody, preincubated with KCNH2/HERG Blocking Peptide (#BLP-PC062).



Immunocytochemistry

**Image 2.** Expression of KV11.1 (HERG) in HEK-293 transfected cells - Immunocytochemical staining of fixed and permeabilized KV11.1 transfected HEK-293 cells. Cells were stained with Anti-KCNH2 (HERG) Antibody (ABIN7043544, ABIN7044976 and ABIN7044977), followed by goat anti-rabbit-AlexaFluor-555 secondary antibody (Red). Almost all transfected cells are stained positive for the KV11.1. Arrows indicate cells that do not express the channel.



Immunoprecipitation

**Image 3.** Immunoprecipitation of KV11.1-expressing HEK-293 cells: - 1. Cell lysate.2. Cell lysate + protein A beads + Anti-KCNH2 (HERG) Antibody (ABIN7043544, ABIN7044976 and ABIN7044977).3. Cell lysate + protein A beads + Anti-KCNH2 (erg1) Antibody (ABIN7043543, ABIN7044916 and ABIN7044917).4. Cell lysate + protein A beads + Anti-KCNH2 (HERG) (extracellular) Antibody (ABIN7043545, ABIN7045006 and ABIN7045007).5. Cell lysate + protein A beads + pre-

immune rabbit serum. Red arrow indicates KV11.1 while the black arrow shows the IgG heavy chain. Immunoblot was performed with the Anti-KCNH2 (HERG) Antibody.