

Datasheet for ABIN7043545
anti-KCNH2 antibody (Extracellular)



[Go to Product page](#)

4 Images

Overview

Quantity:	25 µL
Target:	KCNH2
Binding Specificity:	AA 430-445, Extracellular
Reactivity:	Human, Rat
Host:	Rabbit
Clonality:	Polyclonal
Conjugate:	This KCNH2 antibody is un-conjugated
Application:	Western Blotting (WB), Immunohistochemistry (IHC), Flow Cytometry (FACS), Immunofluorescence (IF), Immunocytochemistry (ICC), Immunoprecipitation (IP), Live Cell Imaging (LCI)

Product Details

Immunogen:	Immunogen: Synthetic peptide Immunogen Sequence: AFLLKETEEGPPATEC corresponding to residues 430-445 of human KV11.1 (HERG)
Isotype:	IgG
Characteristics:	Anti-KCNH2 (HERG) (extracellular) Antibody (ABIN7043545, ABIN7045006 and ABIN7045007)) is a highly specific antibody directed against an extracellular epitope of the human KV11.1 channel. The antibody can be used in western blot, immunoprecipitation, immunohistochemical, immunocytochemical and indirect flow cytometry applications. It has been designed to recognize KV11.1 from human, rat, and mouse samples.

Product Details

Purification: Affinity purified on immobilized antigen.

Target Details

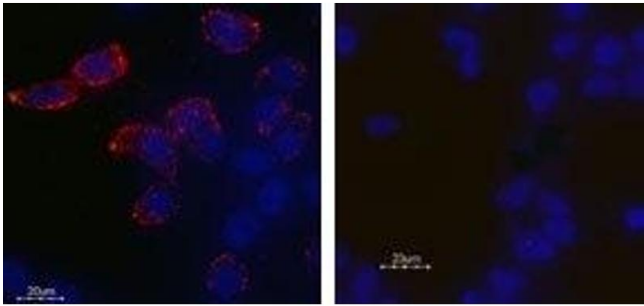
Target:	KCNH2
Alternative Name:	KCNH2 (HERG) (KCNH2 Products)
Background:	Alternative names: KCNH2 (HERG), KV11.1, Potassium voltage-gated channel subfamily H member 2, Ether-a-go-go-related channel 1
Gene ID:	3757
NCBI Accession:	NM_000238
UniProt:	Q12809

Application Details

Application Notes:	Optimal working dilution should be determined by the investigator.
Restrictions:	For Research Use only

Handling

Format:	Lyophilized
Reconstitution:	25 µL, 50 µL or 0.2 mL double distilled water (DDW), depending on the sample size.
Concentration:	0.6 mg/mL
Buffer:	Reconstituted antibody contains phosphate buffered saline (PBS), pH 7.4, 1 % BSA, 0.05 % Sodium azide.
Preservative:	Sodium azide
Precaution of Use:	This product contains Sodium azide: a POISONOUS AND HAZARDOUS SUBSTANCE which should be handled by trained staff only.
Storage:	RT, 4 °C, -20 °C
Storage Comment:	<p>Storage before reconstitution: The antibody ships as a lyophilized powder at room temperature. Upon arrival, it should be stored at -20°C.</p> <p>Storage after reconstitution: The reconstituted solution can be stored at 4°C for up to 1 week. For longer periods, small aliquots should be stored at -20°C. Avoid multiple freezing and thawing. Centrifuge all antibody preparations before use (10000 x g 5 min).</p>



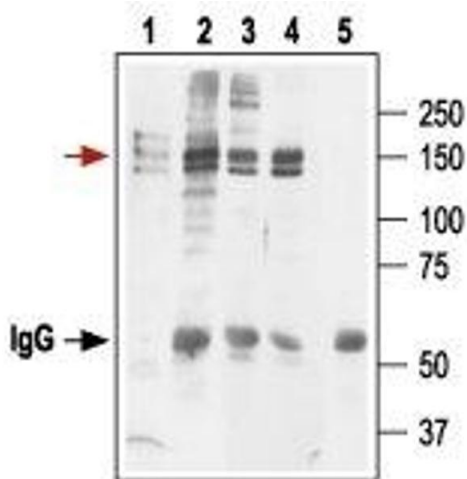
Immunocytochemistry

Image 1. Expression of KV11.1 (HERG) in HEK-293 transfected cells - Cell surface detection of KV11.1 in live intact HEK-293 transfected cells. Cells were stained with Anti-KCNH2 (HERG) (extracellular) Antibody (ABIN7043545, ABIN7045006 and ABIN7045007), (1:25) (left panel) or with Anti-KCNH2 (HERG) (extracellular) Antibody preincubated with the blocking peptide (right panel), followed by goat anti-rabbit-AlexaFluor-555 secondary antibody (red). Nuclei of the living cells were stained with the cell permeable dye Hoechst 33342 (blue). Note that not all cells are stained, indicating that not all the KV11.1 channels are expressed at the cell membrane at the moment of staining.



Immunohistochemistry

Image 2. Expression of KV11.1 (HERG) in rat heart - Immunohistochemical staining of rat heart using Anti-KCNH2 (HERG) (extracellular) Antibody (ABIN7043545, ABIN7045006 and ABIN7045007). A. Transversal section of the atrium wall, note that arterial smooth muscle fibers were not stained (green arrow). B. Longitudinal section of the myocardium. C. Section showing myocardium and endocardium (red arrow). DAB product is brown and the counterstain is cresyl violet.



Immunoprecipitation

Image 3. Immunoprecipitation of KV11.1-expressing HEK-293 cells: - 1. Cell lysate.2. Cell lysate + protein A beads + Anti-KCNH2 (HERG) (extracellular) Antibody (ABIN7043545, ABIN7045006 and ABIN7045007).3. Cell lysate + protein A beads + Anti-KCNH2 (HERG) Antibody (ABIN7043543, ABIN7044916 and ABIN7044917).4. Cell lysate + protein A beads + Anti-KCNH2 (HERG) Antibody (ABIN7043544, ABIN7044976 and ABIN7044977).

ABIN7044977).5. Cell lysate + protein A beads + pre-immune rabbit serum.Red arrow indicates KV11.1 while the black arrow shows the IgG heavy chain.Immunoblot was performed with Anti-KCNH2 (HERG) (extracellular) Antibody.

Please check the [product details page](#) for more images. Overall 4 images are available for ABIN7043545.