

Datasheet for ABIN7043549

anti-KCNH6 antibody (Intracellular, N-Term)**2** Images[Go to Product page](#)

Overview

Quantity:	50 µL
Target:	KCNH6
Binding Specificity:	AA 185-198, Intracellular, N-Term
Reactivity:	Human, Rat, Mouse
Host:	Rabbit
Clonality:	Polyclonal
Conjugate:	This KCNH6 antibody is un-conjugated
Application:	Western Blotting (WB), Immunohistochemistry (IHC), Immunofluorescence (IF)

Product Details

Immunogen:	Immunogen: Synthetic peptide Immunogen Sequence: TLNFVEFNLEKHRS(C), corresponding to amino acid residues 185-198 of human KV11.2 (erg2)
Isotype:	IgG
Characteristics:	Anti-KCNH6 (erg2) Antibody (ABIN7043549 and ABIN7045012)) directed against a highly conserved epitope of the human KV11.2 channel. The antibody can be used to detect KV11.2 in rat samples using both western blotting and immunohistochemistry applications.
Purification:	Affinity purified on immobilized antigen.

Target Details

Target:	KCNH6
---------	-------

Target Details

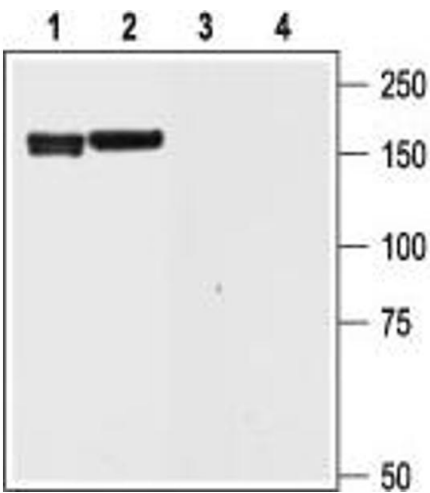
Alternative Name:	KCNH6 (erg2) (KCNH6 Products)
Background:	Alternative names: KCNH6 (erg2), KV11.2, Potassium voltage-gated channel subfamily H member 6, Ether-a-go-go-related channel 2, Eag-related protein 2, ERG-2, hERG2
Gene ID:	81033
NCBI Accession:	NM_030779
UniProt:	Q9H252

Application Details

Application Notes:	Optimal working dilution should be determined by the investigator.
Restrictions:	For Research Use only

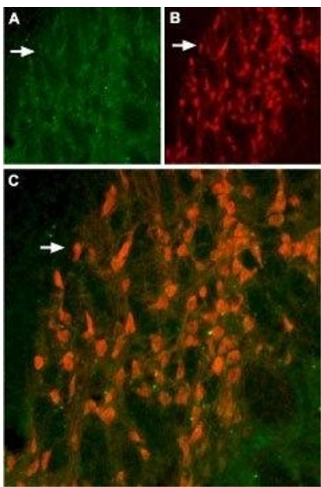
Handling

Format:	Lyophilized
Reconstitution:	50 µL or 0.2 mL double distilled water (DDW), depending on the sample size.
Concentration:	0.75 mg/mL
Buffer:	Reconstituted antibody contains phosphate buffered saline (PBS), pH 7.4, 1 % BSA, 0.05 % Sodium azide.
Preservative:	Sodium azide
Precaution of Use:	This product contains Sodium azide: a POISONOUS AND HAZARDOUS SUBSTANCE which should be handled by trained staff only.
Storage:	RT, 4 °C, -20 °C
Storage Comment:	<p>Storage before reconstitution: The antibody ships as a lyophilized powder at room temperature. Upon arrival, it should be stored at -20°C.</p> <p>Storage after reconstitution: The reconstituted solution can be stored at 4°C for up to 1 week. For longer periods, small aliquots should be stored at -20°C. Avoid multiple freezing and thawing. Centrifuge all antibody preparations before use (10000 x g 5 min).</p>



Western Blotting

Image 1. Western blot analysis of rat brain (1 and 3) and cortex (2 and 4) lysate: - 1,2. Anti-KCNH6 (erg2) Antibody (ABIN7043549 and ABIN7045012), (1:200).3,4. Anti-KCNH6 (erg2) Antibody, preincubated with KCNH6/erg2 Blocking Peptide (#BLP-PC114).



Immunohistochemistry

Image 2. Expression of KV11.2 (erg2) in rat hippocampus - Immunohistochemical staining of KV11.2 in rat hippocampus using Anti-KCNH6 (erg2) Antibody (ABIN7043549 and ABIN7045012). A. KV11.2 appears as diffuse staining (green) that defines the boundary of the reticular nucleus of thalamus (arrow). B. Staining with mouse anti-parvalbumin (PV, red) demonstrates both neuronal and diffuse staining. C. Confocal merge of KV11.2 and PV demonstrates overlap of the two markers labeling the reticular nucleus of the thalamus (orange).