

Datasheet for ABIN7043551
anti-KCNH8 antibody (Intracellular, N-Term)[Go to Product page](#)

1 Image

Overview

Quantity:	50 µL
Target:	KCNH8
Binding Specificity:	AA 143-157, Intracellular, N-Term
Reactivity:	Rat
Host:	Rabbit
Clonality:	Polyclonal
Conjugate:	This KCNH8 antibody is un-conjugated
Application:	Western Blotting (WB)

Product Details

Immunogen:	Immunogen: Synthetic peptide Immunogen Sequence: EDKKEDRAKGRSRAG(C), corresponding to amino acid residues 143-157 of rat KCNH8
Isotype:	IgG
Characteristics:	Anti-KV12.1 (KCNH8) Antibody (ABIN7043551 and ABIN7045011)) that is directed against a highly conserved epitope of the rat protein. The antibody will also likely recognize human and mouse samples.
Purification:	Affinity purified on immobilized antigen.

Target Details

Target:	KCNH8
---------	-------

Target Details

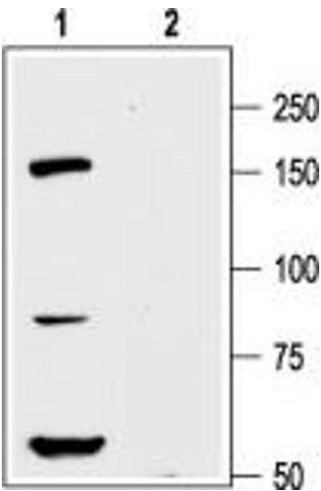
Alternative Name:	KV12.1 (KCNH8) (KCNH8 Products)
Background:	Alternative names: KV12.1 (KCNH8), Potassium voltage-gated channel subfamily H member 8, Ether-a-go-go-like potassium channel 3, ELK channel 3, Elk1, hElk1
Gene ID:	246325
NCBI Accession:	NM_144633
UniProt:	Q9QWS8
Pathways:	RTK Signaling

Application Details

Application Notes:	Optimal working dilution should be determined by the investigator.
Restrictions:	For Research Use only

Handling

Format:	Lyophilized
Reconstitution:	50 µL or 0.2 mL double distilled water (DDW), depending on the sample size.
Concentration:	0.8 mg/mL
Buffer:	Reconstituted antibody contains phosphate buffered saline (PBS), pH 7.4, 1 % BSA, 0.05 % Sodium azide.
Preservative:	Sodium azide
Precaution of Use:	This product contains Sodium azide: a POISONOUS AND HAZARDOUS SUBSTANCE which should be handled by trained staff only.
Storage:	RT, 4 °C, -20 °C
Storage Comment:	<p>Storage before reconstitution: The antibody ships as a lyophilized powder at room temperature. Upon arrival, it should be stored at -20°C.</p> <p>Storage after reconstitution: The reconstituted solution can be stored at 4°C for up to 1 week. For longer periods, small aliquots should be stored at -20°C. Avoid multiple freezing and thawing. Centrifuge all antibody preparations before use (10000 x g 5 min).</p>



Western Blotting

Image 1. Western blot analysis of rat cortex lysate: -
1. Anti-KV12.1 (KCNH8) Antibody (ABIN7043551 and ABIN7045011), (1:200). 2. Anti-KV12.1 (KCNH8) Antibody, preincubated with Kv12.1/KCNH8 Blocking Peptide (#BLP-PC113).