



Datasheet for ABIN7043566

anti-PICK1 antibody (alpha-helix Domain, Intracellular)



[Go to Product page](#)

3 Images

Overview

Quantity:	25 µL
Target:	PICK1
Binding Specificity:	AA 305-318, alpha-helix Domain, Intracellular
Reactivity:	Human, Mouse, Rat
Host:	Rabbit
Clonality:	Polyclonal
Conjugate:	This PICK1 antibody is un-conjugated
Application:	Western Blotting (WB), Immunohistochemistry (IHC), Immunofluorescence (IF)

Product Details

Immunogen:	Immunogen: Synthetic peptide Immunogen Sequence: (C)RARFSQMRKDVLEK, corresponding to amino acid residues 305-318 of rat PICK1
Isotype:	IgG
Characteristics:	Anti-PICK1 Antibody is directed against an epitope of rat PICK1. Anti-PICK1 Antibody (ABIN7043566, ABIN7045156 and ABIN7045157)) can be used in western blot and immunohistochemistry applications. It has been designed to recognize Protein interacting with C kinase 1 from rat, mouse and human samples.
Purification:	Affinity purified on immobilized antigen.

Target Details

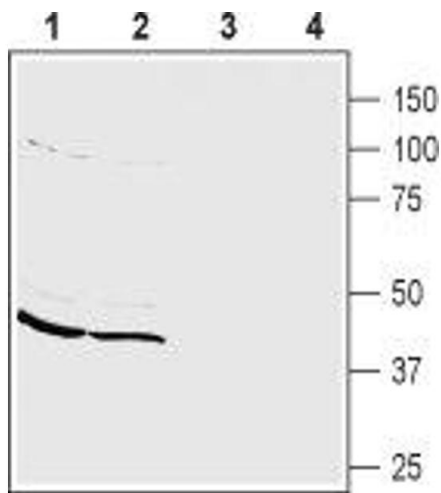
Target:	PICK1
Alternative Name:	PICK1 (PICK1 Products)
Background:	Alternative names: PICK1, PRKCA-binding protein, PRKCABP, Protein interacting with C kinase 1, Protein interacting with PRKCA1, Protein kinase C-alpha-binding protein
Gene ID:	84591
NCBI Accession:	NM_012407
UniProt:	Q9EP80

Application Details

Application Notes:	Optimal working dilution should be determined by the investigator.
Restrictions:	For Research Use only

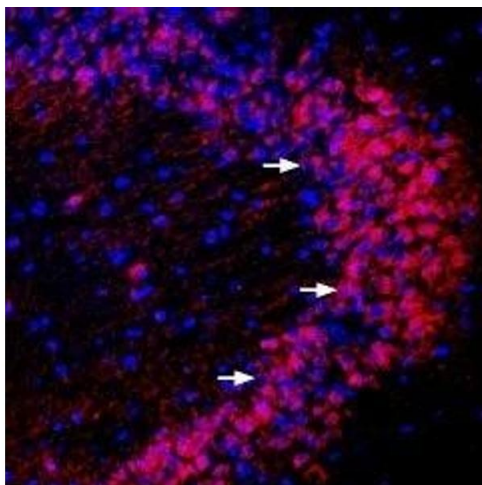
Handling

Format:	Lyophilized
Reconstitution:	25 µL, 50 µL or 0.2 mL double distilled water (DDW), depending on the sample size.
Concentration:	0.8 mg/mL
Buffer:	Reconstituted antibody contains phosphate buffered saline (PBS), pH 7.4, 1 % BSA, 0.05 % Sodium azide.
Preservative:	Sodium azide
Precaution of Use:	This product contains Sodium azide: a POISONOUS AND HAZARDOUS SUBSTANCE which should be handled by trained staff only.
Storage:	RT, 4 °C, -20 °C
Storage Comment:	Storage before reconstitution: The antibody ships as a lyophilized powder at room temperature. Upon arrival, it should be stored at -20°C. Storage after reconstitution: The reconstituted solution can be stored at 4°C for up to 1 week. For longer periods, small aliquots should be stored at -20°C. Avoid multiple freezing and thawing. Centrifuge all antibody preparations before use (10000 x g 5 min).



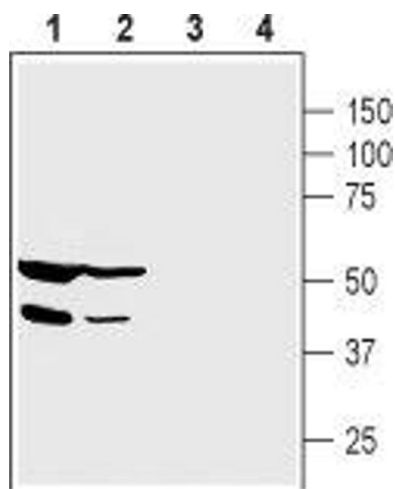
Western Blotting

Image 1. Western blot analysis of mouse (lanes 1 and 3) and rat (lanes 2 and 4) brain membranes: - 1,2. Anti-PICK1 Antibody (ABIN7043566, ABIN7045156 and ABIN7045157), (1:200).3,4. Anti-PICK1 Antibody, preincubated with PICK1 Blocking Peptide (#BLP-PZ014).



Immunohistochemistry

Image 2. Expression of PICK1 in mouse hippocampus - Immunohistochemical staining of perfusion-fixed frozen mouse brain sections using Anti-PICK1 Antibody (ABIN7043566, ABIN7045156 and ABIN7045157), (1:400), followed by anti-rabbit-Cy3 antibody. PICK1 staining (red in the hippocampal CA3 region) is detected in neurons (arrows). Nuclei are stained with DAPI (blue).



Western Blotting

Image 3. Western blot analysis of human PANC-1 pancreatic carcinoma cell lysate (lanes 1 and 3) and human HepG2 liver carcinoma cell lysate (lanes 2 and 4): - 1,2. Anti-PICK1 Antibody (ABIN7043566, ABIN7045156 and ABIN7045157), (1:200).3,4. Anti-PICK1 Antibody, preincubated with PICK1 Blocking Peptide (#BLP-PZ014).