

Datasheet for ABIN7043571

anti-P2RX1 antibody (Extracellular Loop)

4 Images

[Go to Product page](#)

Overview

Quantity:	50 µL
Target:	P2RX1
Binding Specificity:	AA 270-283, Extracellular Loop
Reactivity:	Human, Rat, Mouse
Host:	Rabbit
Clonality:	Polyclonal
Application:	Western Blotting (WB), Immunohistochemistry (IHC), Immunofluorescence (IF), Immunocytochemistry (ICC), Flow Cytometry (FACS), Live Cell Imaging (LCI)

Product Details

Immunogen:	Immunogen: Synthetic peptide Immunogen Sequence: CRPIYEFHGLYEEK, corresponding to amino acid residues 270-283 of human P2X1 receptor
Isotype:	IgG
Characteristics:	Anti-P2X1 Receptor (extracellular) Antibody (ABIN7043571, ABIN7045096 and ABIN7045097)) is a highly specific antibody directed against an epitope of the human protein. The antibody can be used in western blot, immunocytochemistry, immunohistochemistry, and indirect flow cytometry applications. It has been designed to recognize P2X1 receptor from rat, mouse, and human samples.
Purification:	Affinity purified on immobilized antigen.

Target Details

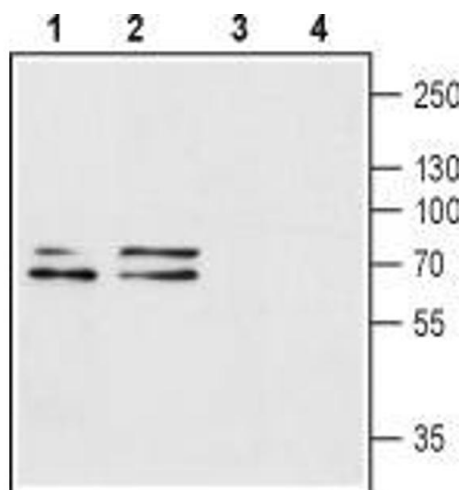
Target:	P2RX1
Alternative Name:	P2X1 Receptor (P2RX1 Products)
Background:	Alternative names: P2X1 Receptor, P2RX1, P2X purinoceptor 1
Gene ID:	5023
NCBI Accession:	NM_002558
UniProt:	P51575
Pathways:	Positive Regulation of Endopeptidase Activity

Application Details

Application Notes:	Optimal working dilution should be determined by the investigator.
Restrictions:	For Research Use only

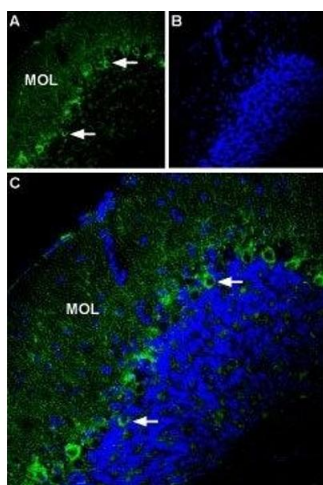
Handling

Format:	Lyophilized
Reconstitution:	50 µL or 0.2 mL double distilled water (DDW), depending on the sample size.
Concentration:	0.8 mg/mL
Buffer:	Reconstituted antibody contains phosphate buffered saline (PBS), pH 7.4, 1 % BSA, 0.05 % Sodium azide.
Preservative:	Sodium azide
Precaution of Use:	This product contains Sodium azide: a POISONOUS AND HAZARDOUS SUBSTANCE which should be handled by trained staff only.
Storage:	RT, 4 °C, -20 °C
Storage Comment:	<p>Storage before reconstitution: The antibody ships as a lyophilized powder at room temperature. Upon arrival, it should be stored at -20°C.</p> <p>Storage after reconstitution: The reconstituted solution can be stored at 4°C for up to 1 week. For longer periods, small aliquots should be stored at -20°C. Avoid multiple freezing and thawing. Centrifuge all antibody preparations before use (10000 x g 5 min).</p>



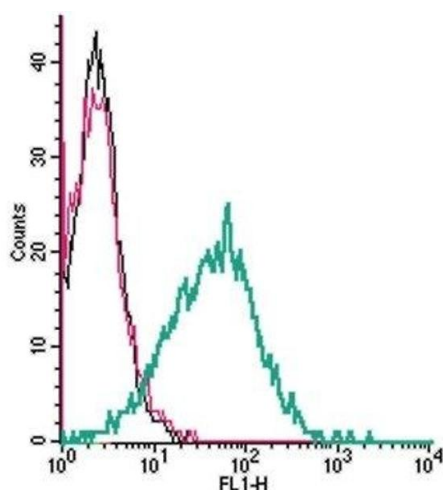
Western Blotting

Image 1. Western blot analysis of rat brain (lanes 1 and 3) and mouse brain (lanes 2 and 4) lysates: - 1,2. Anti-P2X1 Receptor (extracellular) Antibody (ABIN7043571, ABIN7045096 and ABIN7045097), (1:200).3.4. Anti-P2X1 Receptor (extracellular) Antibody, preincubated with P2X1 Receptor (extracellular) Blocking Peptide (#BLP-PR022).



Immunohistochemistry

Image 2. Expression of P2X1 Receptor in mouse cerebellum - Immunohistochemical staining of mouse cerebellum using Anti-P2X1 Receptor (extracellular) Antibody (ABIN7043571, ABIN7045096 and ABIN7045097). A. Most of P2RX1 labeling (green) appears in fine processes in the molecular layer (MOL) and in Purkinje cells (arrows show examples). B. DAPI is used as the counterstain (blue). C. Merge of A and B.



Flow Cytometry

Image 3. Cell surface detection of P2X1 by indirect flow cytometry in live intact human MEG-01 megakaryocytic leukemia cells: (black line) Cells.(red line) Cells + goat-anti-rabbit-FITC.(green line) Cells + Anti-P2X1 Receptor (extracellular) Antibody (ABIN7043571, ABIN7045096 and ABIN7045097), (2.5 µg) + goat-anti-rabbit-FITC.

Please check the [product details page](#) for more images. Overall 4 images are available for ABIN7043571.