

Datasheet for ABIN7043573

anti-P2RX1 antibody (Extracellular Loop) (FITC)[Go to Product page](#)**2** Images

Overview

Quantity:	50 µL
Target:	P2RX1
Binding Specificity:	AA 270-283, Extracellular Loop
Reactivity:	Human, Rat, Mouse
Host:	Rabbit
Clonality:	Polyclonal
Conjugate:	This P2RX1 antibody is conjugated to FITC
Application:	Flow Cytometry (FACS)

Product Details

Immunogen:	Immunogen: Synthetic peptide Immunogen Sequence: CRPIYEFHGLYEEK, corresponding to amino acid residues 270-283 of human P2X1 receptor
Isotype:	IgG
Characteristics:	Anti-P2X1 Receptor (extracellular) Antibody (ABIN7043571, ABIN7045096 and ABIN7045097)) is a highly specific antibody directed against an epitope of the human protein. The antibody can be used in western blot, immunocytochemistry, immunohistochemistry, and indirect flow cytometry applications. It has been designed to recognize P2X1 receptor from rat, mouse, and human samples. \nAnti-P2X1 Receptor (extracellular)-FITC Antibody (ABIN7043571, ABIN7045096 and ABIN7045097)-F) is directly conjugated to fluorescein isothiocyanate (FITC). This labeled antibody can be used in immunofluorescent applications such as direct live cell flow cytometry.

Product Details

Purification: Affinity purified on immobilized antigen.

Target Details

Target: P2RX1

Alternative Name: P2X1 Receptor ([P2RX1 Products](#))

Background: Alternative names: P2X1 Receptor, P2RX1, P2X purinoceptor 1

Gene ID: 5023

NCBI Accession: [NM_002558](#)

UniProt: [P51575](#)

Pathways: [Positive Regulation of Endopeptidase Activity](#)

Application Details

Application Notes: Optimal working dilution should be determined by the investigator.

Restrictions: For Research Use only

Handling

Format: Lyophilized

Reconstitution: 50 µL double distilled water (DDW).

Concentration: 1 mg/mL

Buffer: Reconstituted antibody contains phosphate buffered saline (PBS), pH 7.4, 1 % BSA, 0.05 % Sodium azide.

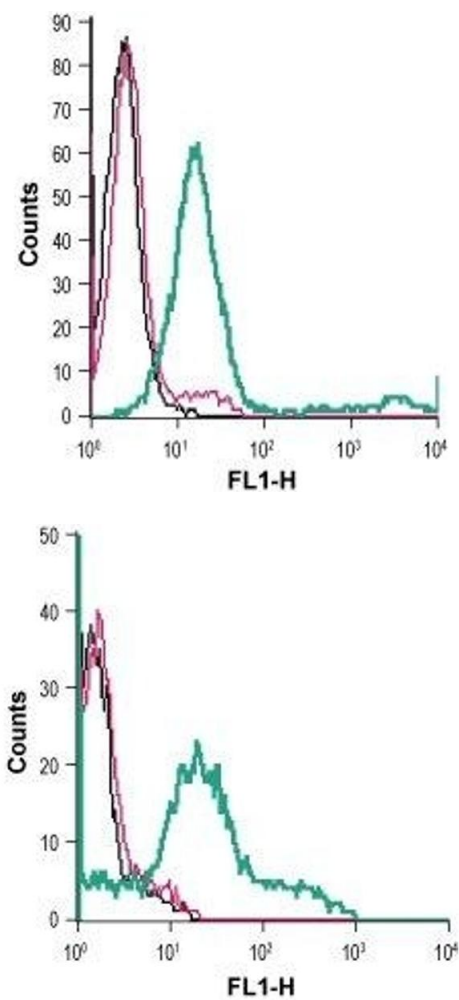
Preservative: Sodium azide

Precaution of Use: This product contains Sodium azide: a POISONOUS AND HAZARDOUS SUBSTANCE which should be handled by trained staff only.

Storage: RT, 4 °C, -20 °C

Storage Comment: Storage before reconstitution: The antibody ships as a lyophilized powder at room temperature. Upon arrival, it should be stored at -20°C.
Storage after reconstitution: The reconstituted solution can be stored at 4°C, protected from the light, for up to 1 week. For longer periods, small aliquots should be stored at -20°C. Avoid multiple freezing and thawing. Centrifuge all antibody preparations before use (10000 x g 5

min).



Flow Cytometry

Image 1. Cell surface detection of P2RX1 in live intact mouse M1 myeloid leukemia cells: (black line) Cells.(red line) Cells + Rabbit IgG isotype control-FITC.(green line) Cells + Anti-P2X1 Receptor (extracellular)-FITC Antibody (ABIN7043573, ABIN7045674, ABIN7045675, ABIN7045676 and ABIN7045677), 5 µg.

Flow Cytometry

Image 2. Cell surface detection of P2RX1 in live intact human MEG-01 megakaryoblastic leukemia cells: (black line) Cells.(red line) Cells + Rabbit IgG isotype control-FITC.(green line) Cells + Anti-P2X1 Receptor (extracellular)-FITC Antibody (ABIN7043573, ABIN7045674, ABIN7045675, ABIN7045676 and ABIN7045677), (5 µg antibody/0.5x 10⁶ cells).