

Datasheet for ABIN7043583  
**anti-P2RY1 antibody (AA 242-258)**



[Go to Product page](#)

2 Images

## Overview

Quantity:	50 µL
Target:	P2RY1
Binding Specificity:	AA 242-258
Reactivity:	Human
Host:	Rabbit
Clonality:	Polyclonal
Conjugate:	This P2RY1 antibody is un-conjugated
Application:	Western Blotting (WB), Immunohistochemistry (IHC), Immunofluorescence (IF), Immunochromatography (IC), Flow Cytometry (FACS), Immunoprecipitation (IP)

## Product Details

Purpose:	A Rabbit Polyclonal Antibody to P2Y1 Receptor
Immunogen:	Immunogen: Synthetic peptide Immunogen Sequence: (C)RALI YKDLD NSPLR RKS, corresponding to residues 242-258 of rat or human P2RY1.
Isotype:	IgG
Specificity:	3rd intracellular loop (i3) between TM5 and TM6 domains.
Cross-Reactivity:	Human, Mouse, Rat
Predicted Reactivity:	turkey,chicken - 16,Rat,17 amino acid residues identical,human,bovine - identical, mouse - 15
Characteristics:	Anti-P2Y1 Receptor Antibody (ABIN7043583, ABIN7045082 and ABIN7045083) is a highly

## Product Details

specific antibody directed against an epitope of the human P2RY1. The antibody can be used in western blot, indirect flow cytometry, immunoprecipitation, immunohistochemistry, and immunocytochemistry applications. It has been designed to recognize P2RY1 from human, rat, and mouse samples.

Purification: Affinity purified on immobilized antigen.

Grade: KO Validated

## Target Details

Target: P2RY1

Alternative Name: P2RY1 ([P2RY1 Products](#))

Background: P2Y purinoceptor 1, P2RY1, The P2Y receptors belong to the G-protein coupled receptors superfamily. P2Y receptors mediate the actions of the extracellular nucleotides (ATP, ADP, UTP and UDP) and regulate several physiologic responses, among them, cardiac function, platelet aggregation and SMC proliferation.<sup>1</sup> The mammalian P2Y family currently includes eight functional receptors, P2Y1, P2Y2, P2Y4, P2Y6, P2Y11, P2Y12, P2Y13, and the UDP-glucose receptor, now renamed P2Y14.<sup>2-4</sup> P2Y1 receptor is abundantly expressed in a number of tissues. In platelets, P2Y1 receptor is co-expressed with P2Y12 receptor, responsible for the initial shape change, aggregation, and rise in intracellular Ca<sup>2+</sup> upon activation in response to ADP.<sup>5</sup>

Alternative names: P2Y1 Receptor, P2Y purinoceptor 1, P2RY1

Gene ID: 25265

NCBI Accession: [NM\\_002563](#)

UniProt: [P49651](#)

Pathways: [Regulation of Carbohydrate Metabolic Process, Feeding Behaviour](#)

## Application Details

Application Notes: Antigen preadsorption control: 1 µg peptide per 1 µg antibody  
Application Dilutions Immunohistochemistry paraffin embedded sections ihc: 1:300  
Application Dilutions Western blot wb: 1:200

Comment: Cited Application: IHC|ICC|IFC  
Negative Control: (ABIN7236680)

Application Details

	Blocking Peptide: (ABIN7236680)
Restrictions:	For Research Use only

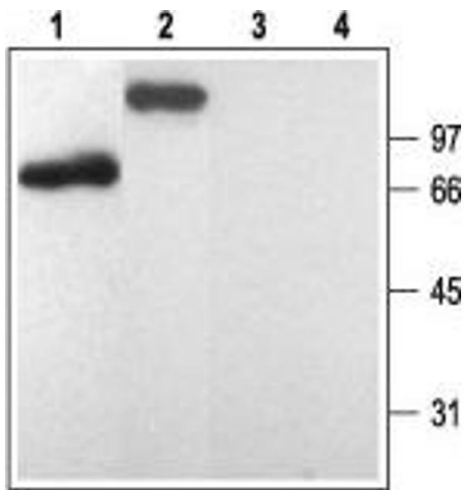
Handling

Format:	Lyophilized
Reconstitution:	0.2 mL double distilled water (DDW).
Concentration:	1 mg/mL
Buffer:	PBS pH 7.4
Storage:	4 °C,-20 °C

Storage Comment: Storage before reconstitution: The antibody ships as a lyophilized powder at room temperature. Upon arrival, it should be stored at -20°C.

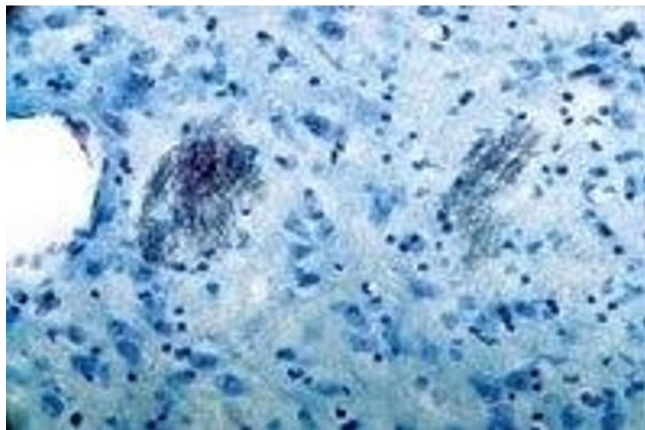
Storage after reconstitution: The reconstituted solution can be stored at 4°C for up to 1 week. For longer periods, small aliquots should be stored at -20°C. Avoid multiple freezing and thawing. Centrifuge all antibody preparations before use (10000 x g 5 min).

Images



**Western Blotting**

**Image 1.** Western blot analysis of rat brain membranes (lanes 1 and 3) and human platelets lysate (lanes 2 and 4): - 1,2. Anti-P2Y1 Receptor Antibody (ABIN7043583, ABIN7045082 and ABIN7045083), (1:200).3,4. Anti-P2Y1 Receptor Antibody, preincubated with P2Y1 Receptor Blocking Peptide (#BLP-PR009).



#### Immunohistochemistry

**Image 2.** Expression of P2RY1 in rat thalamus - Immunohistochemical staining of fasciculi in rat thalamus using Anti-P2Y1 Receptor Antibody (ABIN7043583, ABIN7045082 and ABIN7045083). Specific staining is black. Cresyl violet is used as the counterstain.