

Datasheet for ABIN7043586

**anti-P2RY1 antibody (Extracellular, Loop 2) (FITC)**[Go to Product page](#)**3** Images

## Overview

Quantity:	50 µL
Target:	P2RY1
Binding Specificity:	AA 207-220, Extracellular, Loop 2
Reactivity:	Human, Rat, Mouse
Host:	Rabbit
Clonality:	Polyclonal
Conjugate:	This P2RY1 antibody is conjugated to FITC
Application:	Flow Cytometry (FACS)

## Product Details

Immunogen:	Immunogen: Synthetic peptide Immunogen Sequence: SDEYLRSYFIYSMC, corresponding to amino acid residues 207-220 of human P2RY1
Isotype:	IgG
Characteristics:	Anti-P2Y1 Receptor (extracellular) Antibody (ABIN7043584, ABIN7045094 and ABIN7045095)) is a highly specific antibody directed against an extracellular epitope of the human P2RY1. The antibody can be used in western blot, immunohistochemistry, indirect flow cytometry and live cell imaging applications. It has been designed to recognize P2RY1 from mouse, rat and human samples. \nAnti-P2Y1 Receptor (extracellular)-FITC Antibody (ABIN7043584, ABIN7045094 and ABIN7045095)-F) is directly conjugated to fluorescein isothiocyanate (FITC) fluorophore. This conjugated antibody has been developed to be used in immunofluorescent applications such as direct flow cytometry and live cell imaging.

## Product Details

Purification: Affinity purified on immobilized antigen.

## Target Details

Target: P2RY1

Alternative Name: P2Y1 Receptor ([P2RY1 Products](#))

Background: Alternative names: P2Y purinoceptor 1, ADP Receptor, P2RY1

Gene ID: 44171

NCBI Accession: [NM\\_002563](#)

UniProt: [P47900](#)

Pathways: [Regulation of Carbohydrate Metabolic Process](#), [Feeding Behaviour](#)

## Application Details

Application Notes: Optimal working dilution should be determined by the investigator.

Restrictions: For Research Use only

## Handling

Format: Lyophilized

Reconstitution: 15 µL or 50 µL double distilled water (DDW), depending on the sample size.

Concentration: 1 mg/mL

Buffer: Reconstituted antibody contains phosphate buffered saline (PBS), pH 7.4, 1 % BSA, 0.05 % Sodium azide.

Preservative: Sodium azide

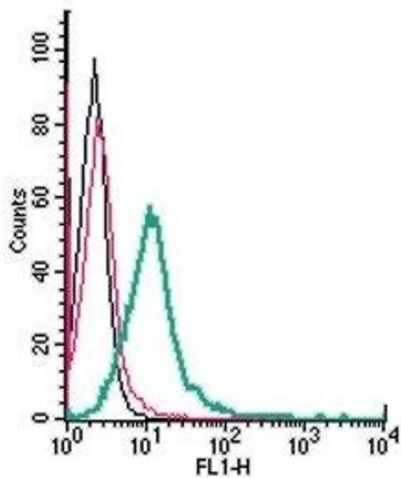
Precaution of Use: This product contains Sodium azide: a POISONOUS AND HAZARDOUS SUBSTANCE which should be handled by trained staff only.

Storage: RT, 4 °C, -20 °C

Storage Comment: Storage before reconstitution: The antibody ships as a lyophilized powder at room temperature. Upon arrival, it should be stored at -20°C.

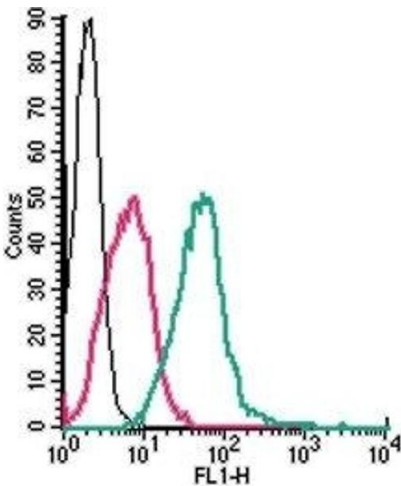
Storage after reconstitution: The reconstituted solution can be stored at 4°C, protected from the light, for up to 1 week. For longer periods, small aliquots should be stored at -20°C. Avoid multiple freezing and thawing. Centrifuge all antibody preparations before use (10000 x g 5

min).



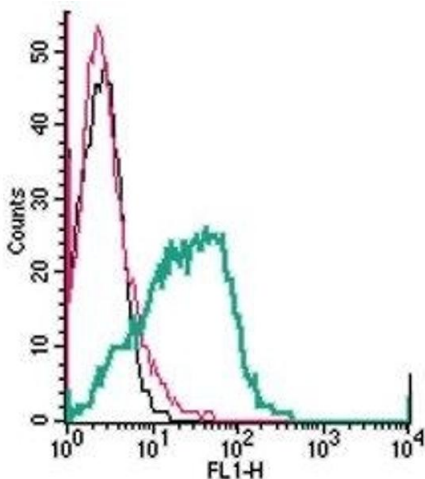
Flow Cytometry

**Image 1.** Cell surface detection of P2Y1 Receptor by direct flow cytometry in live intact mouse BV-2 microglia cells: (black line) Cells.(red line) Cells + Rabbit IgG isotype control-FITC. (green line) Cells + Anti-P2Y1 Receptor (extracellular)-FITC Antibody ((ABIN7043586, ABIN7045670, ABIN7045671, ABIN7045672 and ABIN7045673), 5 µg.



Flow Cytometry

**Image 2.** Cell surface detection of P2Y1 Receptor by direct flow cytometry in live intact mouse J774 macrophage cells: (black line) Cells.(red line) Cells + Rabbit IgG isotype control-FITC. (green line) Cells + Anti-P2Y1 Receptor (extracellular)-FITC Antibody ((ABIN7043586, ABIN7045670, ABIN7045671, ABIN7045672 and ABIN7045673), 2.5 µg.



Flow Cytometry

**Image 3.** Cell surface detection of P2Y1 Receptor by direct flow cytometry in live intact human MEG-01 megakaryoblastic leukemia cells: (black line) Cells.(red line) Cells + Rabbit IgG isotype control-FITC. (green line) Cells + Anti-P2Y1 Receptor (extracellular)-FITC Antibody ((ABIN7043586, ABIN7045670, ABIN7045671, ABIN7045672 and ABIN7045673), 2.5 µg.