



[Go to Product page](#)

Datasheet for ABIN7043587

anti-P2RY14 antibody (Extracellular, Loop 2) (FITC)

2 Images

Overview

Quantity:	50 µL
Target:	P2RY14
Binding Specificity:	AA 172-188, Extracellular, Loop 2
Reactivity:	Human, Mouse, Rat
Host:	Rabbit
Clonality:	Polyclonal
Conjugate:	This P2RY14 antibody is conjugated to FITC
Application:	Flow Cytometry (FACS), Live Cell Imaging (LCI)

Product Details

Immunogen:	Immunogen: Synthetic peptide Immunogen Sequence: CIELKSELGRKWHKASN, corresponding to amino acid residues 172-188 of human P2RY14
Isotype:	IgG
Characteristics:	A Rabbit Polyclonal Antibody to P2Y14 (extracellular) conjugated to the fluorescent dye FITC

Target Details

Target:	P2RY14
Alternative Name:	P2Y purinoceptor 14 (P2RY14 Products)
Background:	Alternative names: P2Y purinoceptor 14, P2RY14, GPR105, UDP-glucose receptor

Target Details

NCBI Accession: [NM_014879](#)

UniProt: [Q15391](#)

Application Details

Application Notes: Optimal working dilution should be determined by the investigator.

Restrictions: For Research Use only

Handling

Format: Lyophilized

Reconstitution: 15 µL or 50 µL double distilled water (DDW), depending on the sample size.

Concentration: 1 mg/mL

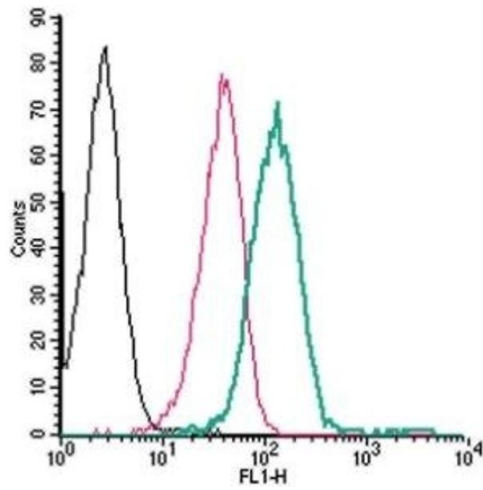
Buffer: Reconstituted antibody contains phosphate buffered saline (PBS), pH 7.4, 1 % BSA, 0.05 % Sodium azide.

Preservative: Sodium azide

Precaution of Use: This product contains Sodium azide: a POISONOUS AND HAZARDOUS SUBSTANCE which should be handled by trained staff only.

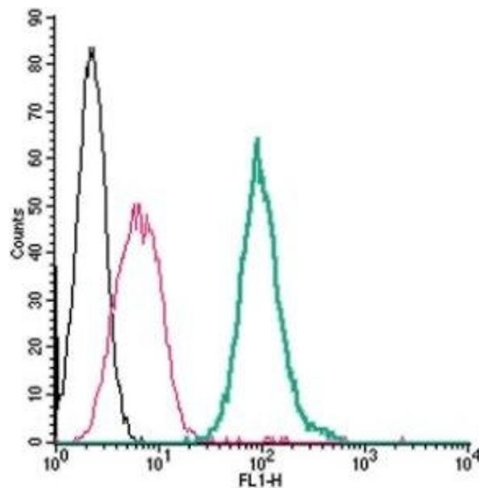
Storage: RT, 4 °C, -20 °C

Storage Comment: Storage before reconstitution: The antibody ships as a lyophilized powder at room temperature. Upon arrival, it should be stored at -20°C.
Storage after reconstitution: The reconstituted solution can be stored at 4°C, protected from the light, for up to 1 week. For longer periods, small aliquots should be stored at -20°C. Avoid multiple freezing and thawing. Centrifuge all antibody preparations before use (10000 x g 5 min).



Flow Cytometry

Image 1. Cell surface detection of P2Y14 by direct flow cytometry in live intact human THP-1 monocytic leukemia cells: (black line) Cells.(red line) Cells + Rabbit IgG isotype control-FITC. (green line) Cells + Anti-P2Y14 (extracellular)-FITC Antibody (ABIN7043587, ABIN7045666, ABIN7045667, ABIN7045668 and ABIN7045669), (5 µg)



Flow Cytometry

Image 2. Cell surface detection of P2Y14 by direct flow cytometry in live intact mouse J774 macrophage cells: (black line) Cells.(red line) Cells + Rabbit IgG isotype control-FITC. (green line) Cells + Anti-P2Y14 (extracellular)-FITC Antibody (ABIN7043587, ABIN7045666, ABIN7045667, ABIN7045668 and ABIN7045669), (2.5 µg)