

Datasheet for ABIN7043588

anti-P2RY14 antibody (2nd Extracellular Loop)**2** Images[Go to Product page](#)

Overview

Quantity:	25 µL
Target:	P2RY14
Binding Specificity:	2nd Extracellular Loop, AA 172-188
Reactivity:	Human, Mouse, Rat
Host:	Rabbit
Clonality:	Polyclonal
Conjugate:	This P2RY14 antibody is un-conjugated
Application:	Western Blotting (WB), Immunohistochemistry (IHC), Immunofluorescence (IF), Flow Cytometry (FACS)

Product Details

Immunogen:	Immunogen: Synthetic peptide Immunogen Sequence: CIELKSELGRKWHKASN, corresponding to amino acid residues 172-188 of human P2RY14
Isotype:	IgG
Characteristics:	Anti-P2Y14 (extracellular) Antibody (ABIN7043588, ABIN7045092 and ABIN7045093)) is a highly specific antibody directed against an epitope of the human protein. The antibody can be used in western blot, immunohistochemistry, and indirect flow cytometry applications. The antibody recognizes an extracellular epitope and is thus highly suited for detecting the receptor in living cells. It has been designed to recognize P2Y14 from human, rat, and mouse samples.
Purification:	Affinity purified on immobilized antigen.

Target Details

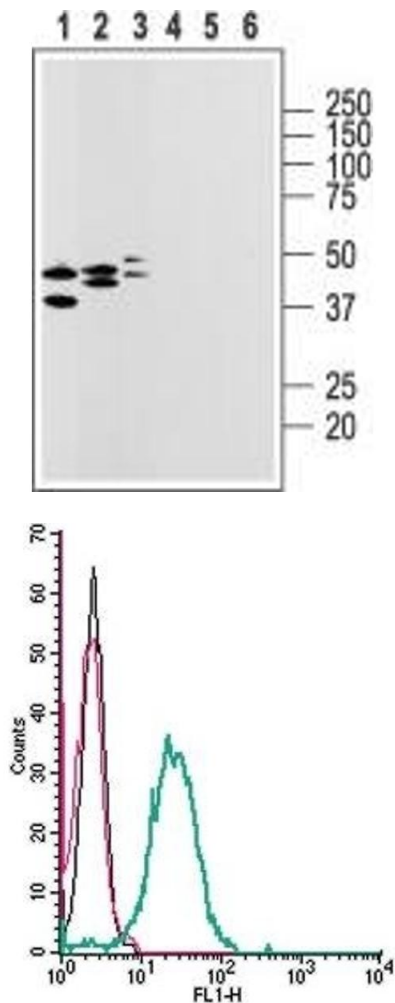
Target:	P2RY14
Alternative Name:	P2Y14 Receptor (P2RY14 Products)
Background:	Alternative names: P2Y14 Receptor, P2Y purinoceptor 14, P2RY14, GPR105, UDP-glucose receptor
Gene ID:	9934
NCBI Accession:	NM_014879
UniProt:	Q15391

Application Details

Application Notes:	Optimal working dilution should be determined by the investigator.
Restrictions:	For Research Use only

Handling

Format:	Lyophilized
Reconstitution:	25 µL, 50 µL or 0.2 mL double distilled water (DDW), depending on the sample size.
Concentration:	0.8 mg/mL
Buffer:	Reconstituted antibody contains phosphate buffered saline (PBS), pH 7.4, 1 % BSA, 0.05 % Sodium azide.
Preservative:	Sodium azide
Precaution of Use:	This product contains Sodium azide: a POISONOUS AND HAZARDOUS SUBSTANCE which should be handled by trained staff only.
Storage:	RT, 4 °C, -20 °C
Storage Comment:	<p>Storage before reconstitution: The antibody ships as a lyophilized powder at room temperature. Upon arrival, it should be stored at -20°C.</p> <p>Storage after reconstitution: The reconstituted solution can be stored at 4°C for up to 1 week. For longer periods, small aliquots should be stored at -20°C. Avoid multiple freezing and thawing. Centrifuge all antibody preparations before use (10000 x g 5 min).</p>



Western Blotting

Image 1. Western blot analysis of rat heart membranes (lanes 1 and 4), brain (lanes 2 and 5) and lung lysates (lanes 3 and 6): - 1-3. Anti-P2Y14 Receptor (extracellular) Antibody (ABIN7043588, ABIN7045092 and ABIN7045093), (1:200).4-6. Anti-P2Y14 Receptor (extracellular) Antibody, preincubated with P2Y14 Receptor (extracellular) Blocking Peptide (#BLP-PR018).

Flow Cytometry

Image 2. Cell surface detection of P2Y14 in live intact human THP-1 monocytic leukemia cells: (black line) Cells.(red line) Cells + goat-anti-rabbit-FITC.(green line) Cells + Anti-P2Y14 (extracellular) Antibody (ABIN7043588, ABIN7045092 and ABIN7045093), (5 µg) + goat-anti-rabbit-FITC.