

Datasheet for ABIN7043590

**anti-P2RY6 antibody (C-Term, Intracellular)**[Go to Product page](#)**2** Images

## Overview

Quantity:	25 µL
Target:	P2RY6
Binding Specificity:	AA 311-328, C-Term, Intracellular
Reactivity:	Human, Rat, Mouse
Host:	Rabbit
Clonality:	Polyclonal
Conjugate:	This P2RY6 antibody is un-conjugated
Application:	Western Blotting (WB), Immunohistochemistry (IHC), Flow Cytometry (FACS), Immunocytochemistry (ICC), Immunofluorescence (IF), Immunoprecipitation (IP)

## Product Details

Immunogen:	Immunogen: Synthetic peptide Immunogen Sequence: CQPHDLLQKLTAKWQRQRV, corresponding to amino acid residues 311-328 of rat P2Y6 receptor
Isotype:	IgG
Characteristics:	Anti-P2Y6 Receptor Antibody (ABIN7043590, ABIN7045086 and ABIN7045087)) is a highly specific antibody directed against an epitope of the rat protein. The antibody can be used in western blot, indirect flow cytometry, immunoprecipitation, immunocytochemistry, and immunohistochemistry applications. It has been designed to recognize P2RY6 from rat, mouse, and human samples.
Purification:	Affinity purified on immobilized antigen.

## Target Details

---

Target:	P2RY6
Alternative Name:	P2Y6 Receptor ( <a href="#">P2RY6 Products</a> )
Background:	Alternative names: P2Y6 Receptor, P2Y purinoceptor 6, P2RY6
Gene ID:	117264
NCBI Accession:	<a href="#">NM_001277204</a>
UniProt:	<a href="#">Q63371</a>
Pathways:	<a href="#">Smooth Muscle Cell Migration</a>

## Application Details

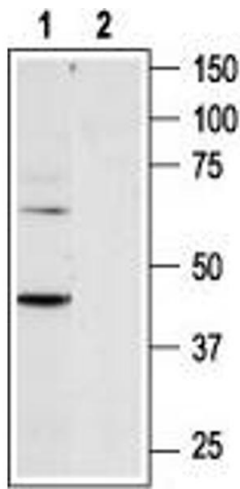
---

Application Notes:	Optimal working dilution should be determined by the investigator.
Restrictions:	For Research Use only

## Handling

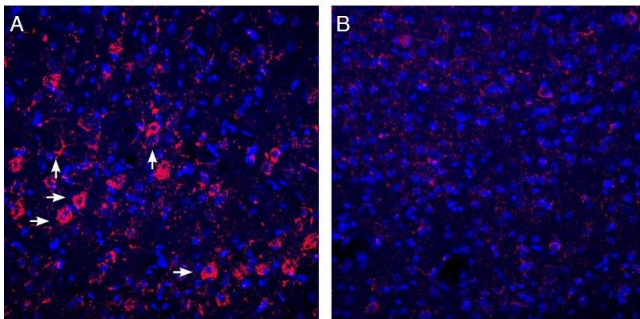
---

Format:	Lyophilized
Reconstitution:	25 µL, 50 µL or 0.2 mL double distilled water (DDW), depending on the sample size.
Concentration:	0.75 mg/mL
Buffer:	Reconstituted antibody contains phosphate buffered saline (PBS), pH 7.4, 1 % BSA, 0.05 % Sodium azide.
Preservative:	Sodium azide
Precaution of Use:	This product contains Sodium azide: a POISONOUS AND HAZARDOUS SUBSTANCE which should be handled by trained staff only.
Storage:	RT, 4 °C, -20 °C
Storage Comment:	<p>Storage before reconstitution: The antibody ships as a lyophilized powder at room temperature. Upon arrival, it should be stored at -20°C.</p> <p>Storage after reconstitution: The reconstituted solution can be stored at 4°C for up to 1 week. For longer periods, small aliquots should be stored at -20°C. Avoid multiple freezing and thawing. Centrifuge all antibody preparations before use (10000 x g 5 min).</p>



### Western Blotting

**Image 1.** Western blot analysis of rat heart membranes: -  
 1. Anti-P2Y6 Receptor Antibody (ABIN7043590, ABIN7045086 and ABIN7045087), (1:200). 2. Anti-P2Y6 Receptor Antibody, preincubated with P2Y6 Receptor Blocking Peptide (#BLP-PR011).



### Immunohistochemistry

**Image 2.** Expression of P2Y6 in rat cortex. -  
 Immunohistochemical staining of perfusion-fixed frozen rat brain sections with Anti-P2Y6 Receptor Antibody (ABIN7043590, ABIN7045086 and ABIN7045087), (1:600), followed by donkey anti-rabbit-biotin and Streptavidin-Cy3. A. P2Y6 immunoreactivity (red) appears in cortical neurons (horizontal arrows) and astrocytes (vertical arrows). B. Pre-incubation of the antibody with P2Y6 Receptor Blocking Peptide (BLP-PR011), suppressed staining. Cell nuclei are stained with DAPI (blue).