

Datasheet for ABIN7043591

anti-P2RY6 antibody (2nd Extracellular Loop)

5 Images

[Go to Product page](#)

Overview

Quantity:	50 µL
Target:	P2RY6
Binding Specificity:	2nd Extracellular Loop, AA 172-186
Reactivity:	Human, Rat, Mouse
Host:	Rabbit
Clonality:	Polyclonal
Conjugate:	This P2RY6 antibody is un-conjugated
Application:	Western Blotting (WB), Immunohistochemistry (IHC), Flow Cytometry (FACS), Immunofluorescence (IF)

Product Details

Immunogen:	Immunogen: Synthetic peptide Immunogen Sequence: (C)RNRTV(S)YDLSPPILS, corresponding to amino acid residues 172 - 186 of mouse P2RY6
Isotype:	IgG
Characteristics:	Anti-P2Y6 Receptor (extracellular) Antibody (ABIN7043591, ABIN7045140 and ABIN7045141)) is a highly specific antibody directed against an epitope of the mouse protein. The antibody can be used in western blot, immunohistochemistry, and indirect live cell flow cytometry applications. It has been designed to recognize P2RY6 from human, rat, and mouse samples.
Purification:	Affinity purified on immobilized antigen.

Target Details

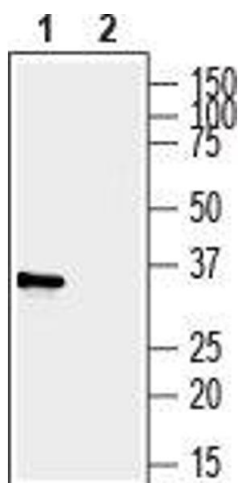
Target:	P2RY6
Alternative Name:	P2Y6 Receptor (P2RY6 Products)
Background:	Alternative names: P2Y6 Receptor, P2Y purinoceptor 6, P2RY6
Gene ID:	233571
NCBI Accession:	NM_001277204
UniProt:	Q9ERK9
Pathways:	Smooth Muscle Cell Migration

Application Details

Application Notes:	Optimal working dilution should be determined by the investigator.
Restrictions:	For Research Use only

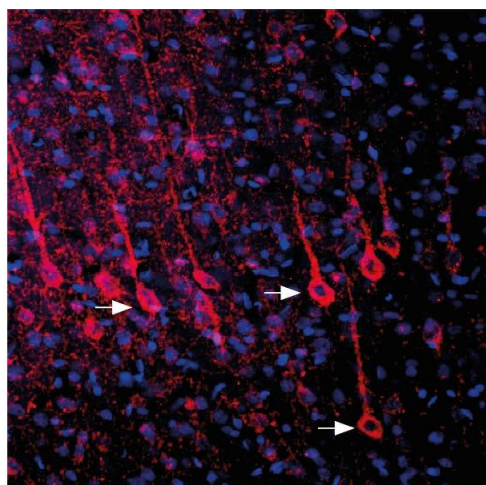
Handling

Format:	Lyophilized
Reconstitution:	25 µL, 50 µL or 0.2 mL double distilled water (DDW), depending on the sample size.
Concentration:	0.8 mg/mL
Buffer:	Reconstituted antibody contains phosphate buffered saline (PBS), pH 7.4, 1 % BSA, 0.05 % Sodium azide.
Preservative:	Sodium azide
Precaution of Use:	This product contains Sodium azide: a POISONOUS AND HAZARDOUS SUBSTANCE which should be handled by trained staff only.
Storage:	RT, 4 °C, -20 °C
Storage Comment:	<p>Storage before reconstitution: The antibody ships as a lyophilized powder at room temperature. Upon arrival, it should be stored at -20°C.</p> <p>Storage after reconstitution: The reconstituted solution can be stored at 4°C for up to 1 week. For longer periods, small aliquots should be stored at -20°C. Avoid multiple freezing and thawing. Centrifuge all antibody preparations before use (10000 x g 5 min).</p>



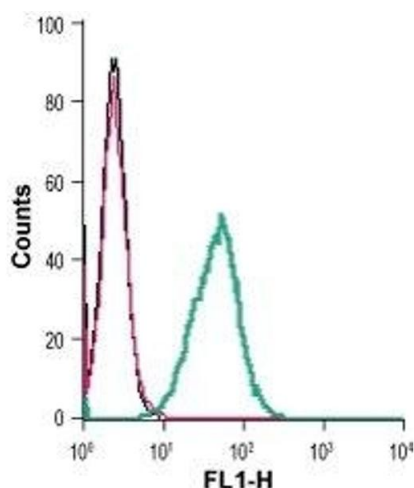
Western Blotting

Image 1. Western blot analysis of human MDA-MB-231 breast adenocarcinoma cell line lysate: - 1. Anti-P2Y6 Receptor (extracellular) Antibody (ABIN7043591, ABIN7045140 and ABIN7045141), (1:200). 2. Anti-P2Y6 Receptor (extracellular) Antibody, preincubated with P2Y6 Receptor (extracellular) Blocking Peptide (#BLP-PR106).



Immunohistochemistry

Image 2. Expression of P2RY6 in rat parietal cortex - Immunohistochemical staining of perfusion-fixed frozen rat brain sections with Anti-P2Y6 Receptor (extracellular) Antibody (ABIN7043591, ABIN7045140 and ABIN7045141), (1:1000), followed by donkey-anti-rabbit-biotin and streptavidin-Cy3. P2RY6 immunoreactivity (red) appears in pyramidal neurons (arrows). Cell nuclei are stained with DAPI (blue).



Flow Cytometry

Image 3. Cell surface detection of P2RY6 in live intact mouse J774 macrophage cells: (black line) Cells. (red line) Cells + goat-anti-rabbit-FITC. (green line) Cells + Anti-P2Y6 Receptor (extracellular) Antibody (ABIN7043591, ABIN7045140 and ABIN7045141), (2.5 µg) + goat-anti-rabbit-FITC.

Please check the [product details page](#) for more images. Overall 5 images are available for ABIN7043591.