



[Go to Product page](#)

Datasheet for ABIN7043595

anti-RAMP1 antibody (Extracellular, N-Term)

4 Images

Overview

Quantity:	25 µL
Target:	RAMP1
Binding Specificity:	AA 27-38, Extracellular, N-Term
Reactivity:	Rat, Mouse
Host:	Rabbit
Clonality:	Polyclonal
Application:	Western Blotting (WB), Immunohistochemistry (IHC), Immunofluorescence (IF), Immunocytochemistry (ICC), Live Cell Imaging (LCI)

Product Details

Immunogen:	Immunogen: Synthetic peptide Immunogen Sequence: CRDPDYGTLIQE, corresponding to amino acid residues 27-38 of rat RAMP1
Isotype:	IgG
Cross-Reactivity (Details):	Not recommended for human samples.
Characteristics:	Anti-RAMP1 (extracellular) Antibody (ABIN7043595, ABIN7045219 and ABIN7045220)) is a highly specific antibody directed against an epitope of the rat protein. The antibody can be used in western blot, immunohistochemistry, and live cell imaging applications. It has been designed to recognize RAMP1 from rat and mouse samples. The antibody does not recognize RAMP1 from human samples.
Purification:	Affinity purified on immobilized antigen.

Target Details

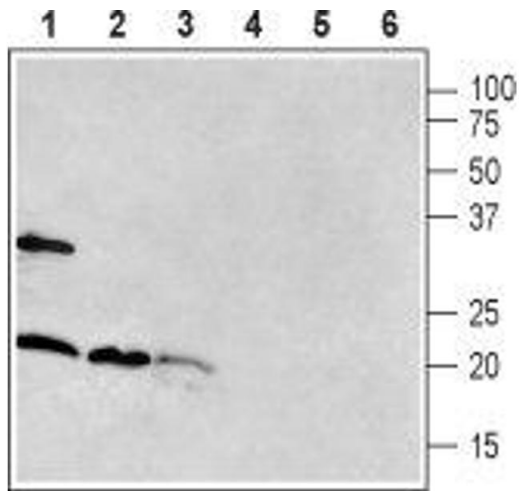
Target:	RAMP1
Alternative Name:	RAMP1 (RAMP1 Products)
Background:	Alternative names: RAMP1, Receptor activity-modifying protein 1, Calcitonin receptor-like receptor activity-modifying protein 1
Gene ID:	5028
NCBI Accession:	NM_005855
UniProt:	Q9JJ74
Pathways:	cAMP Metabolic Process , Myometrial Relaxation and Contraction , Regulation of G-Protein Coupled Receptor Protein Signaling , Regulation of Carbohydrate Metabolic Process

Application Details

Application Notes:	Optimal working dilution should be determined by the investigator.
Restrictions:	For Research Use only

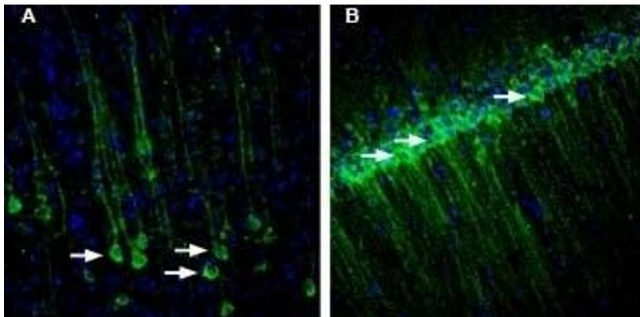
Handling

Format:	Lyophilized
Reconstitution:	25 µL, 50 µL or 0.2 mL double distilled water (DDW), depending on the sample size.
Concentration:	0.85 mg/mL
Buffer:	Reconstituted antibody contains phosphate buffered saline (PBS), pH 7.4, 1 % BSA, 0.05 % Sodium azide.
Preservative:	Sodium azide
Precaution of Use:	This product contains Sodium azide: a POISONOUS AND HAZARDOUS SUBSTANCE which should be handled by trained staff only.
Storage:	RT, 4 °C, -20 °C
Storage Comment:	Storage before reconstitution: The antibody ships as a lyophilized powder at room temperature. Upon arrival, it should be stored at -20°C. Storage after reconstitution: The reconstituted solution can be stored at 4°C for up to 1 week. For longer periods, small aliquots should be stored at -20°C. Avoid multiple freezing and thawing. Centrifuge all antibody preparations before use (10000 x g 5 min).



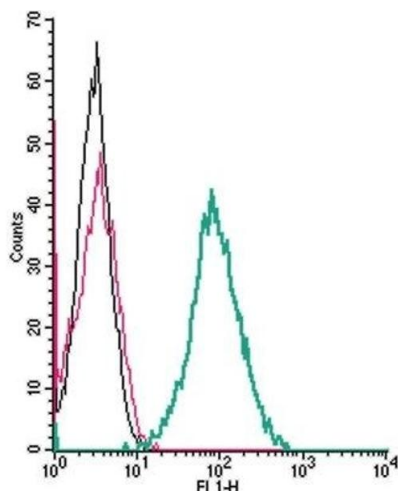
Western Blotting

Image 1. Western blot analysis of rat brain (lanes 1 and 4), mouse brain (lanes 2 and 5) and rat pancreas (lanes 3 and 6): - 1-3. Anti-RAMP1 (extracellular) Antibody (ABIN7043595, ABIN7045219 and ABIN7045220).4-6. Anti-RAMP1 (extracellular) Antibody, preincubated with RAMP1 (extracellular) Blocking Peptide (#BLP-RR021). The antibody was used at a concentration of 1:400 for brain lysates and 1:200 for pancreas lysates.



Immunohistochemistry

Image 2. Expression of RAMP1 in rat brain - Immunohistochemical staining of rat free-floating frozen section using Anti-RAMP1 (extracellular) Antibody (ABIN7043595, ABIN7045219 and ABIN7045220). A. In the parietal cortex, RAMP1 immunoreactivity (green) appears in pyramidal neurons (arrows). B. In the hippocampus, RAMP1 staining (green) is detected in the CA1 region (arrows). Nuclei are demonstrated using DAPI as the counterstain (blue).



Flow Cytometry

Image 3. Cell surface detection of RAMP1 by indirect flow cytometry in live intact mouse J774 macrophage cells:(black line) Cells.(red line) Cells + goat-anti-rabbit-FITC.(green line) Cells + Anti-RAMP1 (extracellular) Antibody (ABIN7043595, ABIN7045219 and ABIN7045220), (2.5 µg) + goat-anti-rabbit-FITC.

Please check the [product details page](#) for more images. Overall 4 images are available for ABIN7043595.