



Datasheet for ABIN7043596
anti-RAMP2 antibody (Extracellular, N-Term)



[Go to Product page](#)

3 Images

Overview

Quantity:	50 µL
Target:	RAMP2
Binding Specificity:	AA 54-68, Extracellular, N-Term
Reactivity:	Mouse, Rat
Host:	Rabbit
Clonality:	Polyclonal
Application:	Western Blotting (WB), Flow Cytometry (FACS)

Product Details

Immunogen:	Immunogen: Synthetic peptide Immunogen Sequence: (C)HPTEDSLLSKGKMED, corresponding to amino acid residues 54-68 of rat RAMP2
Isotype:	IgG
Cross-Reactivity (Details):	Not recommended for use with human samples.
Characteristics:	Anti-RAMP2 (extracellular) Antibody (ABIN7043596, ABIN7045221 and ABIN7045222) is a highly selective antibody directed against an epitope of the rat protein. The antibody can be used in western blot and indirect live cell flow cytometry applications. It has been designed to recognize RAMP2 from mouse, and rat samples. It will not recognize RAMP2 from human samples.
Purification:	Affinity purified on immobilized antigen.

Target Details

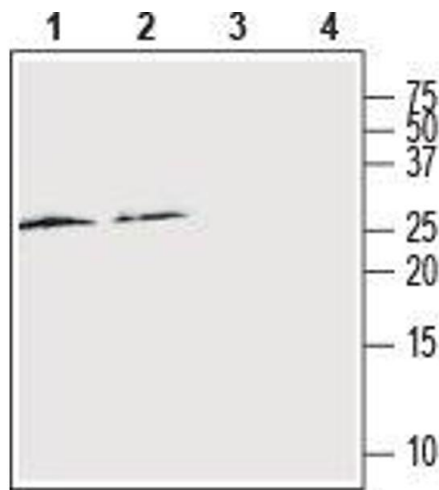
Target:	RAMP2
Alternative Name:	RAMP2 (RAMP2 Products)
Background:	Alternative names: RAMP2, Receptor activity-modifying protein 2, CRLR activity-modifying protein 2, Calcitonin receptor-like receptor activity-modifying protein 2
Gene ID:	58966
NCBI Accession:	NM_005854
UniProt:	Q9JHJ1
Pathways:	cAMP Metabolic Process , Myometrial Relaxation and Contraction , Cell-Cell Junction Organization , Regulation of G-Protein Coupled Receptor Protein Signaling

Application Details

Application Notes:	Optimal working dilution should be determined by the investigator.
Restrictions:	For Research Use only

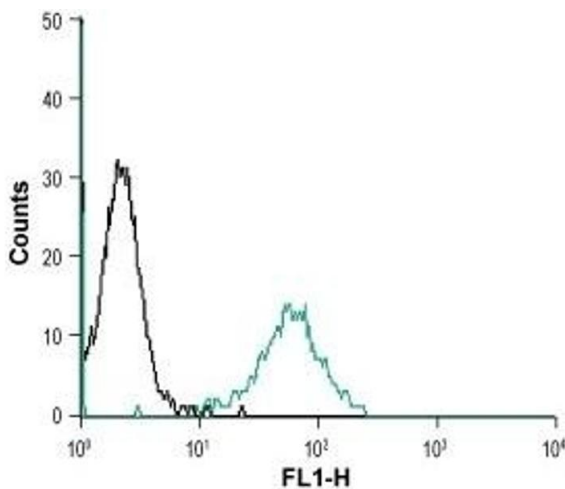
Handling

Format:	Lyophilized
Reconstitution:	25 µL, 50 µL or 0.2 mL double distilled water (DDW), depending on the sample size.
Concentration:	0.8 mg/mL
Buffer:	Reconstituted antibody contains phosphate buffered saline (PBS), pH 7.4, 1 % BSA, 0.05 % Sodium azide.
Preservative:	Sodium azide
Precaution of Use:	This product contains Sodium azide: a POISONOUS AND HAZARDOUS SUBSTANCE which should be handled by trained staff only.
Storage:	RT, 4 °C, -20 °C
Storage Comment:	Storage before reconstitution: The antibody ships as a lyophilized powder at room temperature. Upon arrival, it should be stored at -20°C. Storage after reconstitution: The reconstituted solution can be stored at 4°C for up to 1 week. For longer periods, small aliquots should be stored at -20°C. Avoid multiple freezing and thawing. Centrifuge all antibody preparations before use (10000 x g 5 min).



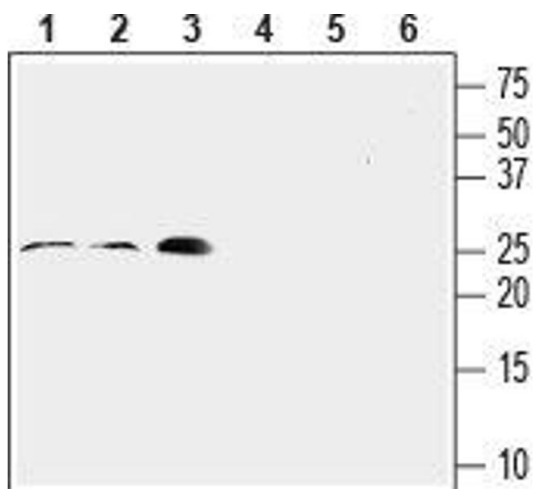
Western Blotting

Image 1. Western blot analysis of rat spleen (lanes 1 and 3) and cortex (lanes 2 and 4): - 1,2. Anti-RAMP2 (extracellular) Antibody (ABIN7043596, ABIN7045221 and ABIN7045222), (1:200).3,4. Anti-RAMP2 (extracellular) Antibody, preincubated with RAMP2 (extracellular) Blocking Peptide (#BLP-RR022).



Flow Cytometry

Image 2. Cell surface detection of RAMP2 in live intact mouse J774 macrophage cells: (black line) Cells.(red line) Cells + goat-anti-rabbit-FITC. (green line) Cells +Anti-RAMP2 (extracellular) Antibody (ABIN7043596, ABIN7045221 and ABIN7045222), (5 µg/0.5x10⁶ cells).



Western Blotting

Image 3. Western blot analysis of rat lung (lanes 1 and 4, 1:200), mouse heart (lanes 2 and 5, 1:200) and rat aortic endothelial cell (RAEC) (lanes 3 and 6, 1:400) lysates: - 1-3. Anti-RAMP2 (extracellular) Antibody (ABIN7043596, ABIN7045221 and ABIN7045222).4-6. Anti-RAMP2 (extracellular) Antibody, preincubated with RAMP2 (extracellular) Blocking Peptide (#BLP-RR022).