

Datasheet for ABIN7043600

anti-Ret Proto-Oncogene antibody (Extracellular, N-Term)[Go to Product page](#)**4** Images

Overview

Quantity:	25 µL
Target:	Ret Proto-Oncogene (RET)
Binding Specificity:	AA 541-553, Extracellular, N-Term
Reactivity:	Human, Mouse, Rat
Host:	Rabbit
Clonality:	Polyclonal
Application:	Western Blotting (WB), Immunohistochemistry (IHC), Immunofluorescence (IF), Flow Cytometry (FACS), Immunocytochemistry (ICC), Live Cell Imaging (LCI)

Product Details

Immunogen:	Immunogen: Synthetic peptide Immunogen Sequence: CEWRQGDGKGITR, corresponding to amino acid residues 541-553 of human Ret
Isotype:	IgG
Cross-Reactivity (Details):	This antibody will recognize the intact Ret receptor and the cleaved Ret extracellular cell-membrane anchored fragment. It won't recognize the cleaved Ret kinase fragment.
Characteristics:	Anti-Ret (extracellular) Antibody is directed against an extracellular epitope of human Ret. Anti-Ret (extracellular) Antibody (# (ABIN7043600, ABIN7044783 and ABIN7044784)) can be used in western blot, indirect flow cytometry, immunohistochemistry and immunocytochemistry applications and has been designed to recognize Ret from rat, mouse and human samples.
Purification:	Affinity purified on immobilized antigen.

Target Details

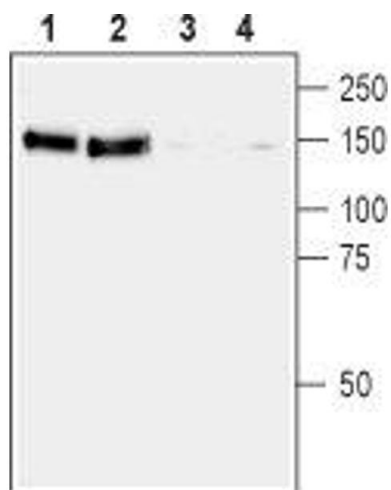
Target:	Ret Proto-Oncogene (RET)
Alternative Name:	Ret (RET Products)
Background:	Alternative names: Ret, Proto-oncogene tyrosine-protein kinase receptor Ret, Proto-oncogene c-Ret, Cadherin family member 12, CDHF12
Gene ID:	5979
NCBI Accession:	NM_020975
UniProt:	P07949
Pathways:	RTK Signaling , Dopaminergic Neurogenesis , Regulation of Cell Size , Tube Formation

Application Details

Application Notes:	Optimal working dilution should be determined by the investigator.
Restrictions:	For Research Use only

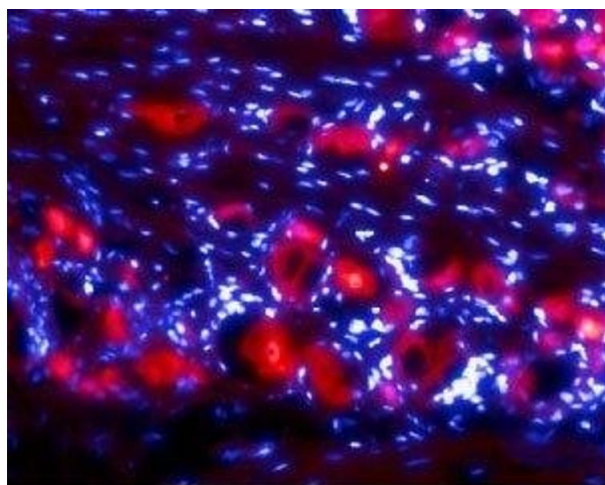
Handling

Format:	Lyophilized
Reconstitution:	25 µL, 50 µL or 0.2 mL double distilled water (DDW), depending on the sample size.
Concentration:	0.8 mg/mL
Buffer:	Reconstituted antibody contains phosphate buffered saline (PBS), pH 7.4, 1 % BSA, 0.05 % Sodium azide.
Preservative:	Sodium azide
Precaution of Use:	This product contains Sodium azide: a POISONOUS AND HAZARDOUS SUBSTANCE which should be handled by trained staff only.
Storage:	RT, 4 °C, -20 °C
Storage Comment:	<p>Storage before reconstitution: The antibody ships as a lyophilized powder at room temperature. Upon arrival, it should be stored at -20°C.</p> <p>Storage after reconstitution: The reconstituted solution can be stored at 4°C for up to 1 week. For longer periods, small aliquots should be stored at -20°C. Avoid multiple freezing and thawing. Centrifuge all antibody preparations before use (10000 x g 5 min).</p>



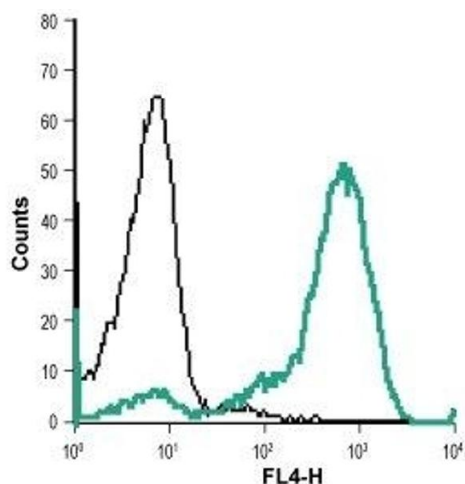
Western Blotting

Image 1. Western blot analysis of rat (lanes 1 and 3) and mouse (lanes 2 and 4) brain membranes: - 1,2. Anti-Ret (extracellular) Antibody (ABIN7043600, ABIN7044783 and ABIN7044784), (1:200).3,4. Anti-Ret (extracellular) Antibody, preincubated with Ret (extracellular) Blocking Peptide (#BLP-NT025).



Immunohistochemistry

Image 2. Expression of Ret in rat DRG - Immunohistochemical staining of rat dorsal root ganglia (DRG) frozen sections using Anti-Ret (extracellular) Antibody (ABIN7043600, ABIN7044783 and ABIN7044784), (1:50). Ret staining (red) is detected in DRG neurons. Hoechst 33342 (blue) is used to stain cell nuclei.



Flow Cytometry

Image 3. Cell surface detection of Ret in live intact human THP-1 monocytic leukemia cell line: (black line) Unstained cells + goat-anti-rabbit-AlexaFluor-647 secondary antibody. (green line) Cells + Anti-Ret (extracellular) Antibody (ABIN7043600, ABIN7044783 and ABIN7044784), (1:20) + goat-anti-rabbit-AlexaFluor-647 secondary antibody.

Please check the [product details page](#) for more images. Overall 4 images are available for ABIN7043600.