

Datasheet for ABIN7043609
anti-SEMA3F antibody (Secreted)[Go to Product page](#)

2 Images

Overview

Quantity:	0.2 mL
Target:	SEMA3F
Binding Specificity:	AA 280-295, Secreted
Reactivity:	Human, Mouse, Rat
Host:	Rabbit
Clonality:	Polyclonal
Conjugate:	This SEMA3F antibody is un-conjugated
Application:	Western Blotting (WB)

Product Details

Immunogen:	Immunogen: Synthetic peptide
	Immunogen Sequence: (C)RERSAEAPQSPAVYAR, corresponding to amino acid residues 280 - 295 of human Semaphorin-3F
Isotype:	IgG
Characteristics:	Anti-Semaphorin-3F Antibody (ABIN7043609, ABIN7045296 and ABIN7045297)) is a highly specific antibody directed against an epitope of the human protein. The antibody can be used in western blot analysis. It has been designed to recognize SEMA3F from mouse, rat, and human samples.
Purification:	Affinity purified on immobilized antigen.

Target Details

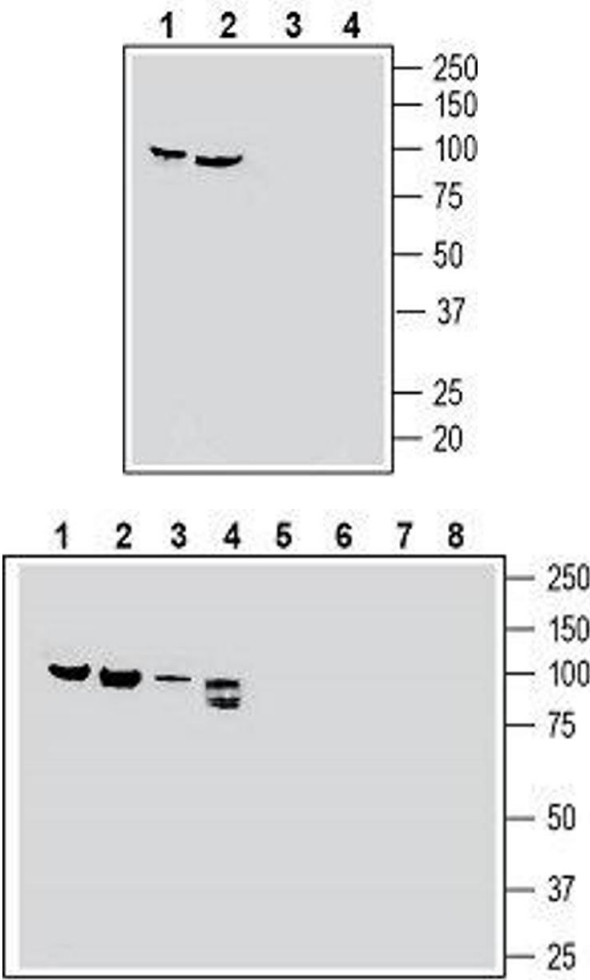
Target:	SEMA3F
Alternative Name:	Semaphorin-3F (SEMA3F Products)
Background:	Alternative names: Semaphorin IV, SEMA3F
Gene ID:	6405
NCBI Accession:	NM_004186
UniProt:	Q13275
Pathways:	Regulation of Cell Size

Application Details

Application Notes:	Optimal working dilution should be determined by the investigator.
Restrictions:	For Research Use only

Handling

Format:	Lyophilized
Reconstitution:	25 µL, 50 µL or 0.2 mL double distilled water (DDW), depending on the sample size.
Concentration:	0.8 mg/mL
Buffer:	Reconstituted antibody contains phosphate buffered saline (PBS), pH 7.4, 1 % BSA, 0.05 % Sodium azide.
Preservative:	Sodium azide
Precaution of Use:	This product contains Sodium azide: a POISONOUS AND HAZARDOUS SUBSTANCE which should be handled by trained staff only.
Storage:	RT, 4 °C, -20 °C
Storage Comment:	<p>Storage before reconstitution: The antibody ships as a lyophilized powder at room temperature. Upon arrival, it should be stored at -20°C.</p> <p>Storage after reconstitution: The reconstituted solution can be stored at 4°C for up to 1 week. For longer periods, small aliquots should be stored at -20°C. Avoid multiple freezing and thawing. Centrifuge all antibody preparations before use (10000 x g 5 min).</p>



Western Blotting

Image 1. Western blot analysis of human HeLa cervix adenocarcinoma cell line lysate (lanes 1 and 3) and human PC-3 prostate adenocarcinoma cell line lysate (lanes 2 and 4): - 1, 2. Anti-Semaphorin-3F Antibody (ABIN7043609, ABIN7045296 and ABIN7045297), (1:400). 3, 4. Anti-Semaphorin-3F Antibody, preincubated with Semaphorin-3F Blocking Peptide (#BLP-SR056) (#BLP-SR056).

Western Blotting

Image 2. Western blot analysis of rat brain membranes (lanes 1 and 5), rat lung membranes (lanes 2 and 6), mouse heart membranes (lanes 3 and 7) and rat dorsal root ganglion lysate (lanes 4 and 8): - 1-4. Anti-Semaphorin-3F Antibody (ABIN7043609, ABIN7045296 and ABIN7045297), (1:400). 5-8. Anti-Semaphorin-3F Antibody, preincubated with Semaphorin-3F Blocking Peptide (#BLP-SR056) (#BLP-SR056).